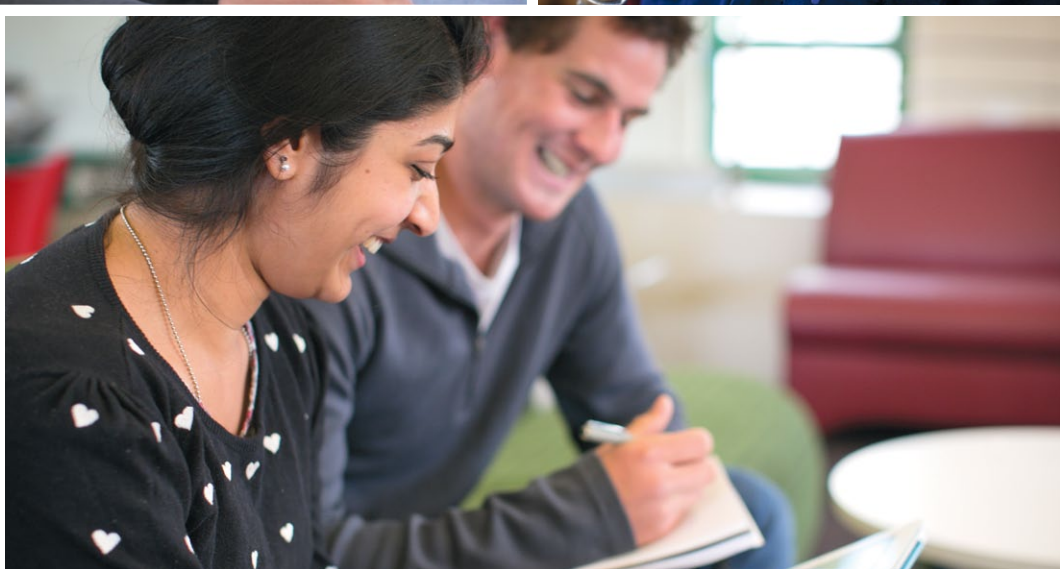




2014 Programme Guide

For students in New Zealand and around the world!





Scan our QR code
to go to www.op.ac.nz

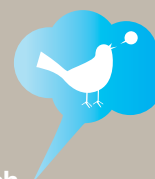


Find us at www.facebook.com/otagopoly

Watch us at www.youtube.com/otagopolytechnic



Tweet us at www.twitter.com/otagopolytech





- 02** Kia ora and welcome
- 03** Dunedin
- 04** Central Otago
- 05** Auckland
- 06** English language studies
- 08** Study preparation
- 08** Certificate studies
- 09** Foundation Studies
- 09** Youth Guarantee Scheme
- 10** Sustainable Practice
- 12** Capable NZ

Health and Community Careers

Bridging options
Nursing
Midwifery
Occupational Therapy
Social Services
also including Applied Science

14

Creative Careers

Bridging options
Art
Design
Communications, Interiors,
Fashion and Product, and
Creative Studies

24

Hospitality Careers

Cookery and Culinary Arts
Food and Beverage Service
Hospitality Management

34

Business, Tourism and IT Careers

Business
Tourism
Computing and
Information Technology

40

Trades and Technical Careers

Bridging options
Construction
also including Architectural Draughting,
Quantity Surveying, Stonemasonry
Engineering
Automotive, Mechanical,
Civil, Electrical

48

Sport and Adventure Careers

Sport
also including Applied Science
(Physical Activity, Health and Wellness),
Physical Conditioning
Adventure
also including Snowsports,
Avalanche Safety

58

Life Sciences Careers

Horticulture
also including Arboriculture, Viticulture,
Sports Turf Management
Veterinary Nursing and
Animal Health

64

- 72** Study Abroad and Exchange
- 73** Supporting your success
- 73** OPSA
- 74** Student services
- 76** Accommodation
- 78** Information for international students
- 80** Frequently-asked questions
- 81** Affordable lifestyle
- 82** Entry requirements and country-specific equivalencies
- 86** Programme summary
- 88** Getting ready to apply



Kia ora and welcome

Every year, we are pleased to welcome over 7,000 full- and part-time students from around the world.

With campuses in Dunedin, Central Otago and Auckland*, you can decide where and what you want to study. Online learning opportunities also give you the freedom to learn at your own pace from a location that suits you!

Study with us and gain a well-respected and work-relevant education. With over 100 applied programmes, from foundation certificates to postgraduate degrees, benefit from the chance to learn by doing and to achieve a recognised qualification.

Whether you want to improve your English language skills, prepare for your dream career or build upon your existing knowledge, we have something for everyone!

With our small class sizes, high quality teaching and exceptional student support, we hope the time you spend with us will be some of the best times of your life!

*international students only

WE OTAGO POLYTECHNIC

In these tough economic times you want to make sure that your study gives you the best chance of a career in your chosen field. Luckily for you employers love our work-ready graduates! We are one of New Zealand's leading tertiary organisations and the quality of our programmes is recognised far and wide.

We can't deny the facts...

- > Over 95 per cent of employers rated our graduates as moderately to very highly demonstrating all attributes they value, and the same or better than graduates from other tertiary institutions.
- > In a survey of our graduates from 2011, conducted in mid-2012, 92.6 per cent were either employed, undertaking further study, or both.
- > In 2012, we rated top in New Zealand for qualification completions and our overall student satisfaction ratings were 90 per cent.
- > In the 2012 Australasian Survey of Student Engagement – which polled more than 25,000 students from 40 Australasian tertiary providers – we led the benchmark groups for work-integrated learning, staff-student interaction, enriching educational experiences, supportive learning environments and the career-readiness of our degree students. Our students are also more satisfied than students at other polytechnics and universities in Australasia.
- > When NZQA carried out its 2011 External Evaluation and Review, it gave us its highest-possible rating: “highly confident” in our educational performance, and “highly confident” in our ability to assess our own performance.

Dunedin

dunedin

www.DunedinNZ.com

Population: 125,000

Average summer temperature: 20°C

Average winter temperature: 11°C

Activities: Shopping, walking, playing golf, surfing and swimming, mountain biking, going to concerts and exhibitions, eating out, exploring eco-tourism sites and cultural festivals, national and international sporting events

What to pack: For winter: warm clothes, waterproof jacket, hat, gloves and scarf
For summer: lightweight clothing, beach clothes and sunglasses

Closest airport: Dunedin International Airport

Home to about 25,000 students, Dunedin is one of New Zealand's best centres of learning.

It is a safe and beautiful city with historic buildings, great shopping and interesting museums and art galleries. There are plenty of cafés, bars and restaurants that offer food from around the globe.

A short drive from the city centre, you can enjoy lovely beaches and other stunning scenery, and see some of the world's rarest wildlife.

Our campus is within walking distance of the city centre, in the heart of the student district.

Otago Polytechnic Dunedin Campus

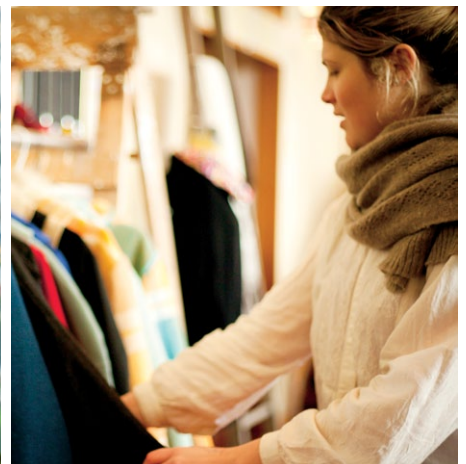
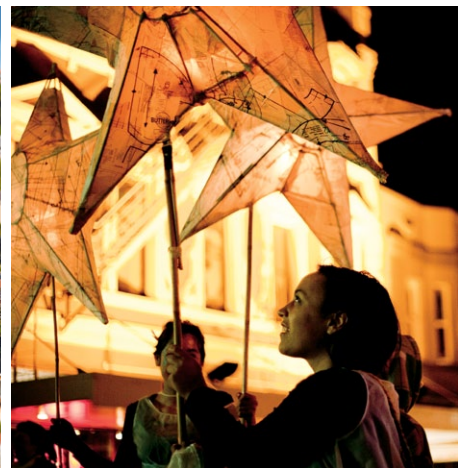
New Zealand **0800 762 786**

International **+64 3 471 6870**

Email **info@op.ac.nz**

F Block, Forth Street, Dunedin, New Zealand 9016

Postal address: Private Bag 1910, Dunedin, New Zealand 9054





Quick Facts:

Population: 17,450

Distance from Queenstown and Wanaka:
45 minutes' drive

Distance from Dunedin: Three hours' drive

Average summer temperature: 25°C

Average winter temperature: 5°C

Major activities: Snowsports, water sports, hiking, biking, adventure tourism, arts, culture and heritage sites, and enjoying local cuisine

What to pack: For winter: warm clothes, hat, gloves, waterproof jacket and scarf. For summer: light clothing, swimsuit, sunscreen, sunhat and sunglasses

Closest airports: Queenstown, Wanaka, Dunedin, Invercargill

www.centralotagonz.com

Central Otago

Known for its beautiful landscape, Central Otago is regarded as the adventure capital of New Zealand.

It is home to many lakes, rivers and mountains, and offers a range of tourism, hospitality, adventure sports and leisure activities.

Otago Polytechnic's main Central Otago campus is in the town of Cromwell, the perfect place to enjoy water sports and the outdoors, with many opportunities for skiing and snowboarding close by.

Otago Polytechnic Central Otago Campus

New Zealand 0800 765 9276

International +64 3 445 9900

Email info@op.ac.nz

Corner Erris and Ray Streets, Cromwell, New Zealand 9310

Postal address: PO Box 16, Cromwell, New Zealand 9342

Auckland

THE AUCKLAND INTERNATIONAL CAMPUS IS A
JOINT VENTURE WITH FUTURE SKILLS ACADEMY

Quick Facts:

Population: 1.6 million

Climate: Warm summers and mild, wet winters

Average summer temperature: 23°C

Average winter temperature: 14°C

Sunshine hours: 2,060 per year

What to pack: For winter: warm clothes and a waterproof jacket. For summer: Lightweight clothes, beachwear and sunglasses.

Closest airport: Auckland International Airport

www.aucklandnz.com

Auckland is the largest city in New Zealand. It is the country's centre of business and industry, and is known as the City of Sails because it is a world yachting capital.

Auckland has beautiful sandy beaches with many islands close by. It has plenty of parks and other places to relax, walk and play sport. It has been rated the third best city in the world and the best city in Asia and the Pacific for lifestyle.*

Our international campus is located in the heart of downtown Auckland, so you are never far from the action and fun of this cosmopolitan city.

At the Auckland International Campus, international students can study:

- > **English language (Level 3 and 4 only)** (see page 6)
- > **Bachelor of Applied Management** (see page 44)
- > **Graduate Diploma in Applied Management** (see page 44)
- > **Graduate Diploma in Hotel Management** (see page 44)

*Mercer Quality of Life Survey, 2011

Otago Polytechnic Auckland International Campus

New Zealand **0800 111 212**

International **+64 9 309 0301**

Email **auckland@op.ac.nz**

Level 2/350 Queen Street, Auckland, New Zealand 1141

Postal address: PO Box 5268, Auckland, New Zealand 1141

Fast track your degree!

At the Auckland International Campus, you could finish your degree in just 2.25 years! For more information, view our Auckland prospectus online at www.op.ac.nz/auckland



Start here, go anywhere

Study English, gain some skills, and get ready for more study

For international students, one of the best things about studying overseas is the chance to improve your language skills. At Otago Polytechnic, there are many ways to improve your English.

We offer classes at all levels, we can add English classes into other subjects and we can even create a course especially for your group or school.

New Zealand Certificate in English Language (Levels 1–5)*

We offer English language at levels from beginner to advanced. Find the level that's right for you.

Location	Dunedin and Auckland
Duration	From three weeks (minimum). If you plan to study with us for more than three months, international students will need a student visa. See page 78 for more details. Each level of the Certificate is one semester. Part-time enrolments are welcome.
Start	When you are ready. Talk to us about your goals and we will help you start at the right time.
Fee	New Zealand citizens and residents \$2,304 per semester International students \$385 per week or \$6,160 per semester

Entry requirements

We do not require an English language test result. You will be tested and placed at the right level when you arrive.

How to apply

Put New Zealand Certificate in English Language (Levels 1, 2, 3, 4 or 5) on your application form.

Level 1 Beginner

Level 2 Pre-intermediate

If you speak some English, but want to learn more

Level 3 Intermediate

If you can use English in everyday settings, but you want to improve so you can study in English

When you have completed this level, you can enter **English PLUS** and some certificate programmes

Level 4 Upper-intermediate

If you can use English with accuracy and want to prepare for higher-level academic study

When you have completed this level, you can enter most academic programmes at certificate, diploma, degree or graduate diploma levels

Level 5 Advanced

When you have completed this level, you can enter some health-related degrees and postgraduate programmes

*Subject to final approval



English PLUS Certificate in Foundation Studies (Level 4)

Learn English + something new

English PLUS: for fun, to prepare for study or just for you

English + Creative

Explore Art and Design

Cookery

Taste your future in Cooking or Hospitality

Computing

Enter the world of IT and Computing

Business

Prepare for your future career

Sport

Create your own adventure

Technical Horticulture

Find out about the horticulture industry and possible work placements

Academic courses taken during **English PLUS** (see above) count towards an undergraduate certificate, diploma or degree.

Location Dunedin
Central Otago (**English PLUS** Technical Horticulture)

Duration One semester or one year
Talk to us about your goals and how to use **English PLUS** as a bridge to our undergraduate certificates, diplomas or degrees.

Start February or July

Fee New Zealand citizens and residents \$2,304 per semester
International students \$385 per week or \$6,160 per semester

Entry requirements

New Zealand Certificate in English Language (Level 3) or IELTS 5.5

How to apply

Put Certificate in Foundation Studies (Level 4) **English PLUS** (Creative / Cookery / Computing / Business / Sport) on your application form.

English for Groups

Experience New Zealand while learning English. We can develop special English language programmes for your school, team or organisation.

This makes it perfect for combining English language studies with specialist areas including environmental, media or business studies. You can make the most of your time in New Zealand by also enjoying tourism activities around New Zealand's beautiful South Island.

Location Dunedin, Central Otago

Duration This varies, depending on your needs.

Fee Fees vary. Contact us for more information.

English language requirements

None. The programme is designed to suit your group's language requirements.

- > A specialist English for Groups coordinator will work with you to design the best programme for you and your group, and help you find appropriate accommodation.
- > You can choose how long your programme lasts – it could be two weeks, or up to one year.
- > You will be awarded a Certificate of Achievement at a special closing ceremony.

Study preparation for international students at Otago Polytechnic

Studying in another country can be very different from your experiences at home. This course is designed to help international students succeed in their studies at Otago Polytechnic.

You will be introduced to the teaching styles and learning environment at Otago Polytechnic, and will gain confidence and new skills, including:

- > Techniques for academic writing and referencing
- > Research skills
- > Note-taking techniques for lectures and tutorials
- > e-learning familiarisation
- > How to contribute to class discussions
- > How to make a class presentation.

You are automatically accepted into this programme as part of your full-time undergraduate or graduate certificate, diploma or degree programme.

Location	Dunedin and Auckland
Duration	Three weeks full-time
Start	Dunedin: Three weeks before the beginning of each semester Auckland: Three weeks before degree intake
Entry	Included as part of your Offer of Place from Otago Polytechnic, for full-time study
Fee	Free. No cost.

Certificate studies the perfect foundation

Our certificates are ideal if you require a period of tertiary study before entering an undergraduate programme. See our entry criteria on page 82 to find out if you need to complete a certificate first.

Certificate in Health (Level 4) (see page 15)

Your pathway to study in Nursing, Midwifery, Occupational Therapy, Social Services or Applied Science

Spaces are limited and highly competitive for our health degrees. Please see page 82 to find out more about our entry and selection criteria.

Certificate in Human Services (Level 4) (Specialty) (see page 23)

Your pathway to study in Social Services

Certificate in Creative Studies (see page 26)

Your pathway to study in Design, Art and Information Technology

Certificate in Fashion Studies (Level 4) (see page 32)

Your pathway to study in Design (Fashion)

Certificate in Cookery (Level 3) (see page 37)

Your pathway to study in Culinary Arts

Certificate in Professional Restaurant, Bar and Wine (Level 4) (see page 38)

Your pathway to study in Hospitality

National Certificate in Business Administration (Level 4) (see page 42)

Your pathway to study in Business and Applied Management

Certificate in Information Technology (Level 3) and (Level 4) (see page 46)

Your pathway to study in Information Technology

Certificate in Foundation Studies (Level 3)* Akoraka Mahi Tini

Certificate in Foundation Studies (Level 3)* Masonry Trades

Certificate in Foundation Studies (Level 3)* Painting and Decorating

Certificate in Foundation Studies (Level 3)* Plasterboard Fixing and Stopping

(see page 50)

Your pathway to study in Trades

National Certificate in Horticulture (Level 4) (see page 67)

Your pathway to study in Horticulture and Viticulture

*Subject to final approval and not available for international students

Foundation Studies

There are so many great career options in the workplace today. It may just take a few steps to get there.

You may have worked in several different jobs, taken a break to raise a family, need to improve your English language skills or be looking for a second chance at academic success. When you do decide on a career for yourself, the qualifications you need can often seem out of reach.

Otago Polytechnic's programmes in Foundation Studies can help you to identify and reach your education and career goals.

Our Foundation Studies programme has two areas:

- > For students who wish to improve their reading, writing, learning, mathematics and computing skills
- > For students who wish to improve their English language skills, see page 6 for the New Zealand Certificate in English language (Levels 1–5).

At the end of the programme you will have the background required to enter many certificate and diploma programmes, and a number of degree programmes.

Certificate in Foundation Studies (Levels 2 and 3)

Location	Dunedin
Duration	Six months full-time (per level); part-time options
Delivery	On campus
Level	2 and 3
Credits	60
Start	February and July, 2014
Fee	Domestic: \$2,244 (per level) International: \$6,160 (per level)
Apply	By February or July, 2014

Gain a solid grounding for further education. You will improve your English, numeracy, study skills, personal development skills and computer skills. You may also study subjects in areas such as Hospitality, Business, Information Technology and Creative Studies.

Entry requirements

- > You will take part in a placement quiz to determine which level suits you best.
- > You must provide evidence of English language proficiency.*

Further study options

This programme is all about further studies! Graduates of Level 2 or 3 may apply for any Level 3 or 4 programmes. Graduates of Level 3 will have a stronger application for diploma-level study.

Youth Guarantee Scheme**

If you are 16 or 17 years of age and have trouble staying engaged in education, check out this option.

The Youth Guarantee Scheme gives you the chance to take part in hands-on programmes that are directed towards a particular trade or profession. You gain valuable practical experience, while also improving your literacy and numeracy skills. This will open up a whole new world of work, education and training opportunities.

Each student will complete an individual learning plan and we will also provide you with career planning advice and support.

Find out about our Youth Guarantee Scheme programmes in:

- > **Certificate in Automotive and Mechanical Engineering (Level 2)**
- > **Certificate in Foundation Studies (Trades Options) (Level 3)**

For more details, please call us on 0800 762 786 or visit www.op.ac.nz/youth-guarantee-scheme

- > **National Certificate in Business Administration and Computing (Level 3)**
- > **Certificate in Foundation Studies (Levels 2 and 3)**
- > **Certificate in Foundation Studies (Level 3)*****
Akoraka Mahi Tini
- > **Certificate in Engineering (Level 3)*****
- > **Certificate in Information Technology (Level 3)**
- > **Certificate in Cookery (Level 3)**
- > **Certificate in Café and Bar (Level 3)**
- > **Certificate in Applied Travel and Tourism (Level 3)**
- > **Certificate in Automotive Engineering (Level 3)**

You may not have to pay for the first year of study if you meet certain criteria.

*International students only

**Youth Guarantee Scheme not available for international students

***Subject to final approval

Sustainable Practice

Sustainability plays a major role at Otago Polytechnic, influencing our day-to-day operations and decision-making.

We've made a pledge, both to our community and our students, to "do the right thing" – working towards a sustainable future for ourselves, and future generations. This means considering the social and environmental impact of the decisions we make.

Our initiatives include the Living Campus project (students are welcome to pick vegetables from the gardens around campus), Polybikes, seeking sustainable energy alternatives, waste exchange, recycling and sustainable purchasing.

The **Centre for Sustainable Practice**, established at Otago Polytechnic's Central Otago campus, meets the growing need for a new approach towards business, farming and industry practices. The Centre is working to build a nationwide hub for business, industry groups and government agencies. It is an incubator for sustainable practice education, provides consultancy services, conducts research into sustainable products and services, and hosts seminars and events.

The Centre also delivers programmes dedicated to sustainable practice education. These qualifications are ideal for people currently operating or working in any kind of business and provide an introduction to sustainable practice for students looking to specialise in this field.

We also offer sustainable growing and farming programmes. Please see page 66 for more information.



Certificate in Sustainable Practice (Level 5)

Location	Online
Duration	One semester full-time; two semesters part-time
Delivery	Optional block courses held in Wanaka/Queenstown and Raglan/Auckland
Level	5
Credits	60
Start	February and July, 2014
Fee	Domestic: \$3,502 International: \$9,640
Apply	Preferred by 30 November, 2013 or 31 May, 2014

If you want to implement sustainable practices in your business, workplace or community, this is the programme for you. It is also a great option if you would like to add sustainable emphasis to other tertiary study programmes you are completing.

Entry requirements

- > Open entry but you must have access to the internet.
- > **If English is not your first language**, you must also demonstrate English language skills equivalent to an IELTS overall band score (academic) of 5.0, with no band score less than 5.0, and meet your country-specific equivalent entry requirements listed on pages 82–85.

Further study options

Expand your employment potential with our Bachelor of Applied Management (Sustainable Practice).

Graduate Diploma in Sustainable Practice

Location	Online
Duration	One year full-time; three years part-time
Delivery	Compulsory block courses in Wanaka/Queenstown or Raglan/Auckland
Level	7
Credits	120
Start	February, 2014
Fee	Domestic: \$6,352 International: \$16,900
Apply	Preferred by 30 November, 2013

Gain the grounding to implement sustainable practice leadership in communities and workplaces. Examine the social, economic, political and environmental implications that underpin sustainability by undertaking both theory and project-based learning.

Entry requirements

- > You must hold a bachelor's degree **OR** equivalent skills/experience.
- > **International students** will be individually assessed to ensure they meet the entry requirements.
- > You must have access to the internet.
- > You **may not** enrol in this programme if you have already completed a Sustainable Practice degree major.
- > **If English is not your first language**, you must also demonstrate English language skills equivalent to an IELTS overall band score (academic) of 6.0, with no band score less than 6.0.



Adventure company leads the way

Flying fox adventure operator Ziptrek Ecotours are fast becoming sustainable leaders in the Queenstown community. In 2011, they won the coveted Sustainable 60 Award by Fairfax Media and have since enrolled in the Sustainable Practice 360° programme.

"Ziptrek is a company that lives and breathes sustainability and our staff actively educates and explains this as part of the tour experience," says Ziptrek Ecotours Director, Trent Yeo.

"We began the 360° programme on the continuing journey to improve the business in its economic, social and environmental performance. Business efficiency and sustainable growth are extremely important to us, especially as a new business of just over two years, so we need to establish ourselves in a relatively crowded tourism market here in Queenstown.

"This course is thorough and strategic, creating structure around your business ideas. Another advantage is finding a network of other business leaders who have different challenges and realities of business, but have the same motivations as you to creatively pursue a better outcome for the company and the environment."



CAPABLE NZ

Would you like formal recognition of the experience and knowledge you have gained through various career and life experiences?

Otago Polytechnic is home to Capable NZ, the leading organisation for the delivery of Assessment of Prior Learning (APL) and work-based learning in this country.

APL is a rigorous, internationally-recognised way to measure your existing knowledge against formal academic qualifications. You may already be well on your way to a qualification and Capable NZ will help you fill the gaps to get there – requiring less time and money than traditional tertiary study.

The APL Process

- > An online profiling tool for many qualifications will assist you to determine a qualification pathway.
- > Capable NZ facilitators help candidates select the qualification that best suits their experiences.
- > Candidates demonstrate and reflect on the knowledge and skills they have learned in workplaces and through other relevant life experiences.
- > A rigorous assessment will result in the awarding of part or all of a qualification.

Capable Workplaces – the work-based learning process

Traditionally, tertiary education has been about teaching an “off-the-shelf” programme.

Capable Workplaces turns this concept on its head by starting with organisations and learners. What skills do you require? What do staff members need to progress their careers in your workplace?

We then develop a programme that meets nationally-recognised standards at all levels, focusing on degrees and postgraduate qualifications.

Programmes

You can be assessed for almost all of Otago Polytechnic's programmes through Capable NZ.

A pathway to become a fully-qualified food and/or technology teacher is also available through the National Centre of Excellence in Technology Teaching, a joint venture of Otago Polytechnic and the University of Otago.

Capable NZ programmes are delivered nationwide from offices in Dunedin, Wellington and Auckland.

For more information call **03 477 3014** or email info@capablenz.co.nz

Graduate Diploma in Tertiary Education (Level 7)

Location	Dunedin*
Duration	Two to five years part-time (flexible options available)
Delivery	Online and face-to-face teaching
Level	7
Credits	120
Start	March, 2014
Fee	Domestic: \$750 (per 15 credit course) International: \$20,280
Apply	Anytime

This programme enables you to gain a formal work-based teaching qualification as an educator for adult learners within the tertiary environment. It does so by helping you to create, deliver and assess quality learning opportunities for students. If you are new to tertiary teaching you would start with an inquiry into your own practice context. For international students, this would include an introduction to the New Zealand tertiary teaching context.

Entry requirements

- > An undergraduate degree **OR** equivalent practical, professional or scholarly experience at tertiary level.
- > You are engaged in ongoing tertiary teaching activities or employment.
- > **International students** will be individually assessed to ensure they meet the entry requirements.
- > **If English is not your first language**, you must demonstrate English language skills equivalent to an IELTS overall band score (academic) of 6.0, with no band score less than 6.0.

Further study options

Progress into postgraduate tertiary learning and teaching studies, and advance your skills and employment potential.

Graduate Diploma in Professional Practice and Master of Professional Practice

Location	Dunedin and online
Duration	One to two years full-time; designed to be studied alongside your regular employment
Delivery	Learning is self-paced, occurs within the workplace, and facilitators and academic/professional mentors will support you throughout the whole process
Level	Graduate Diploma: 7, Master's: 9
Credits	Graduate Diploma: 120, Master's: 240
Start	Flexible
Fee	Domestic Graduate Diploma: \$5,000 Domestic Master's: \$12,000 (years one and two) International Graduate Diploma and Master's: TBA
Apply	Anytime

Are you ready to advance your career through postgraduate education? Are you an experienced professional facing interesting challenges in your workplace? In a first of its kind in New Zealand, this programme supports your ambitions by focusing on your real-life work goals. These directly form the basis for your learning, making this qualification ideal for professionals in any sector wishing to develop skills that are highly relevant to their workplace.

Note: These qualifications can be gained alongside full-time employment due to the flexible work-based learning focus of the programme and academic credits will be awarded in recognition of existing knowledge. This can reduce the length of time needed to attain the degree.

Entry requirements

- > **Year one entry**
 - > You must hold an undergraduate degree in a relevant field of study, **and/or** degree-equivalent professional experience.
- > **Year two entry**
 - > You must hold a postgraduate qualification in a relevant field of study **and/or** professional experience in a relevant career or workplace equivalent to Level 8.
- > **International students** will be individually assessed to ensure they meet the entry requirements.
- > **If English is not your first language**, you must also demonstrate English language skills equivalent to an IELTS overall band score (academic) of 6.5, with no band score less than 6.0.

*Options for studying at different locations throughout New Zealand available by arrangement



Certificate in Mata ā Ao Māori (Level 4)

Location	Dunedin
Duration	Up to three years part-time
Delivery	On campus; workshops, discussions and an overnight stay in a marae
Level	4
Credits	40
Start	Flexible
Fee	Domestic: \$2,002 This programme is NOT available for international students
Apply	Anytime

Gain a recognised tertiary qualification that incorporates Treaty education, te reo Māori and tikaka Māori. This programme is ideal if your professional demands are such that an increased proficiency in matters Māori would be advantageous. Consisting of six separate units, which may be studied separately but which collectively make up a coherent and complete programme, each course is designed to be a small, manageable piece of learning that can be realistically integrated into a busy schedule.

Entry requirements

- > Open entry.



“I never really worried about getting a qualification earlier in my career because I was growing in an organisation; moving through the company and being presented with a lot of challenges and experiences. But when I decided to move, I found I missed out on a few jobs because I was competing against other candidates who, in some instances, held degrees. The whole concept of Capable NZ is fantastic.”

Debbie Galdeman
Bachelor of Applied Management
(Business Transformation and Change)

Health and Community Careers

Nursing

Midwifery

Occupational Therapy

Social Services

Physical Activity, Health and Wellness
(see page 61)

A career as a health-care professional is extremely rewarding – you'll contribute to the well-being of the community and have the chance to really make a difference in people's lives.

Not quite ready to launch into a Health and Community career? See the opposite page for a bridging option.



“Otago Polytechnic gave me a really good understanding of occupational therapy and an appreciation of the diversity of the profession. This allowed me to work out which areas I was drawn most to.”

Anna Baker
Bachelor of Occupational Therapy



Progression to health-related degrees

If your goal is to enter one of Otago Polytechnic's programmes in the health and community area but you do not have the required academic qualifications, Otago Polytechnic offers a “bridging option” to prepare you for the challenges of more advanced study.

The Certificate in Health (Level 4) programme is suitable for both school-leavers and mature students preparing for a change in career. You will study core courses in areas such as academic communication, mathematics and bioscience for health. The programme is provided flexibly using delivery methods that include online resources and face-to-face seminar blocks in Dunedin.

Successful completion of this programme may help you to meet the academic criteria for entry to degree programmes in the areas of nursing, midwifery, occupational therapy and social services. It also provides an excellent bridging option into our Bachelor of Applied Science (Physical Activity, Health and Wellness) (see page 61).

Please note, due to the high demand for places, successful completion of the Certificate in Health (Level 4) will not automatically guarantee entry to Otago Polytechnic's health-related degrees.

A minimum **B+ average** pass is required to meet the academic entry requirements for the Bachelor of Nursing, Bachelor of Midwifery, Bachelor of Occupational Therapy, Bachelor of Applied Social Services and Bachelor of Applied Science (Physical Activity, Health and Wellness). For Midwifery and Nursing, this must include a B+ in bioscience.

These programmes also have non-academic entry requirements – you may need to plan ahead!

Please contact Otago Polytechnic to discuss your pathway to a health-related degree.

Certificate in Health (Level 4)

Location	Dunedin or online with block courses
Duration	One year full-time; two years part-time
Delivery	A mix of online and face-to-face teaching in Dunedin or online with three compulsory block courses in Dunedin or Porirua per semester
Level	4
Credits	120
Start	February and July, 2014
Fee	Domestic: \$6,177 International: \$19,240
Apply	Preferred by 30 November, 2013

Study core subjects such as academic communication, mathematics and bioscience for health, and an introduction to midwifery for students considering that career path. This programme offers the choice of two electives: introduction to midwifery and introduction to careers in health.

Entry requirements

- > Open entry but you must have access to the internet.
- > **If English is not your first language**, you must also demonstrate English language skills equivalent to an IELTS overall band score (academic) of 6.0, with no band score less than 6.0, and meet your country-specific equivalent entry requirements listed on pages 82–85.

Further study options

Move on to higher levels of learning with our Bachelor of Nursing, Bachelor of Midwifery, Bachelor of Occupational Therapy, Bachelor of Social Services and Bachelor of Applied Science (Physical Activity, Health and Wellness).

Bridging option

Nursing

A degree in nursing can be a passport to the world. Nursing is a rewarding career that offers the opportunity to make a real difference in people's lives.

Nurses care for and work with individuals, whānau and groups of clients in collaboration with other health professionals. Registered nurses may specialise in a variety of practice areas, including medical and surgical, mental health, child health/paediatrics, aged care and primary health care.

What skills do I need?

- > A sound knowledge base, including a proven ability in English, biology and/or chemistry
- > Excellent communication skills with people of all ages and backgrounds
- > The ability to work well under pressure and use healthy coping skills
- > Excellent problem-solving and decision-making skills
- > A passion and enthusiasm for working with people.

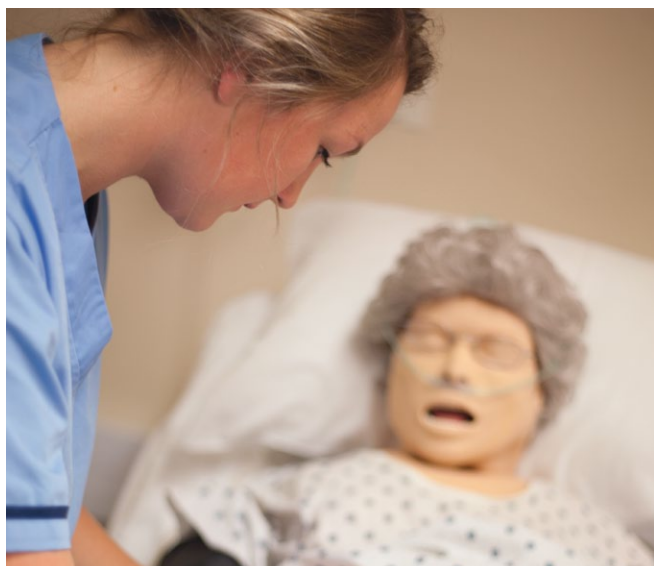
What industry opportunities are there?

There is a worldwide demand for registered nurses and a wide range of career options in Aotearoa New Zealand and overseas. These include working for hospitals, health centres, community agencies, public health, Plunket and rest homes.

Otago Polytechnic Nursing graduates are in high demand throughout Aotearoa New Zealand due to their high calibre and work readiness. Māori and Pasifika nurses are particularly sought after. There is now an established career pathway to Nurse Practitioner through master's degree study, and further educational opportunities are available for practice specialisation.

How much can I earn?

New graduates earn more than \$44,000 per year. With experience, registered nurses can earn between \$51,000 and \$103,000 per year in New Zealand.



Bachelor of Nursing

Location	Dunedin or Timaru
Duration	Three years full-time; up to five years part-time (limited places)
Delivery	50% of your final year will involve clinical practice
Level	7
Credits	360
Start	February, 2014
Fee	Domestic: \$6,729 (first year) International: \$21,560 (first year)
Apply	Preferred by 30 September, 2013

Become educated to the highest professional standards in nursing through this programme, which contains an even balance of theory and clinical practice over three years. After completing this Bachelor of Nursing degree, your name will be put forward for the examination for registered nurses, to enable you to practise as a nurse.

Entry requirements

- > 42 NCEA credits at Level 3 or higher across four subjects, including
 - > 14 credits in biology **OR** chemistry
 - > 14 credits in English **OR** an English-rich subject **OR** equivalent.
- > **If you are over 20**, you must have completed the equivalent of NCEA Level 3 biology and/or chemistry within the past five years.
- > 8 NCEA credits at Level 2 in English (4 credits in reading and 4 in writing) **OR** equivalent.
- > **International students** will be individually assessed to ensure they meet degree-level entry requirements.
- > You must provide a First Aid Certificate and make a health declaration.
- > You must provide two references showcasing a range of academic and community/work-related skills.
- > You must complete a Ministry of Justice police check for any convictions.
- > **If you are a Certificate in Health (Level 4) student**, you must nominate a programme lecturer as an academic reference.
- > **If English is not your first language**, you must also demonstrate English language skills equivalent to an IELTS overall band score (academic) of 6.5, with no band score less than 6.5.

Further study options

Expand your career prospects with postgraduate studies in Nursing.



Competency Assessment Programme (CAP) for New Zealand Registered Nurses

Location	Dunedin
Duration	5–8 weeks
Delivery	Face-to-face and online learning, 10 days in theoretical skill-based study, plus a minimum of 120 hours in clinical practice at an approved clinical provider in Dunedin or the Otago region
Start	January, April, June and October, 2014
Fee	Domestic: \$1,490 This programme is NOT available for international students
Apply	Two weeks before starting date

Ideal if you are a New Zealand registered nurse who requires a Competency Assessment Programme to obtain a current Annual Practising Certificate. The theory courses within this programme may also be used for professional development purposes and you may enrol in one or both of these.

Entry requirements

- > All New Zealand registered nurses who meet the requirements of the Nursing Council of New Zealand (NCNZ) will be accepted into this programme. However, acceptance is dependent on the availability of places in the requested intake.
- > You must provide a curriculum vitae detailing your professional nursing experience as this will help us to negotiate an appropriate clinical placement for you.
- > You must be computer literate and preferably have access to a laptop.
- > Refer to www.nursingcouncil.org.nz

Further study options

Advance your skills and increase your career prospects with postgraduate Nursing studies in New Zealand.

Competency Assessment Programme (CAP) for Overseas Registered Nurses

Location	Dunedin
Duration	8–12 weeks
Delivery	Face-to-face and online learning, 10 days in theoretical skill-based study, plus a minimum of 240 hours in clinical practice at an approved clinical provider in Dunedin or the Otago region
Start	January, April, July and October, 2014
Fee	\$7,500
Apply	Two weeks before starting date

Ideal if you require a Competency Assessment Programme to obtain nursing registration in New Zealand. Become educated to the highest professional standards and learn curriculum content specific to nursing practice as part of a health-care team in the Aotearoa New Zealand system.

Entry requirements

- > You must provide the original written notification from the Nursing Council of the requirement to complete a Competency Assessment Programme before registration.
- > You must have a recognised degree in Nursing.
- > You must have at least two years' experience as a registered nurse.
- > You must be computer literate and preferably have access to a laptop.
- > Refer to www.nursingcouncil.org.nz
- > **If English is not your first language**, you must also demonstrate English language skills equivalent to an IELTS overall band score (academic) of 7.0, with no band score less than 7.0, **OR** Occupational English Test (OET) with a B band in each section.

Note: Scores higher than 7.0 are preferred and will facilitate achievement in the programme.

Further study options

Advance your skills and increase your career prospects with postgraduate Nursing studies in New Zealand.

Bridging option

Certificate in Health (Level 4)
please see "Progression to health-related degrees" on page 15.

Midwifery

Experience the privilege of welcoming a new person into the world. Midwives provide women-centred health care with the aim of ensuring the best possible experience for women and their families during pregnancy, childbirth and the early weeks of a baby's life.

Midwives assess and monitor the well-being of mothers and babies throughout pregnancy and labour, facilitate at births, examine newborn babies, help mothers with breastfeeding and baby care, and regularly check the health of mother and baby for several weeks after birth. Midwives are able to carry out emergency procedures if necessary. They are responsible for care in uncomplicated childbirth but if complications arise they collaborate with medical and midwifery colleagues to ensure all specialist care is provided.

What skills do I need?

- > A passion for women's health
- > The ability to work independently and with others
- > The ability to respond to changing circumstances
- > Excellent communication and negotiation skills
- > The ability to work well under pressure
- > The ability to be accountable.

What industry opportunities are there?

Self-employment – managing a caseload of clients > Employment within a maternity facility > Education and research in the field of midwifery > Provision of professional advice within professional organisations or maternity facilities.

In New Zealand, midwives are the main providers of maternity services, and there is a particularly high demand for Māori and Pasifika practitioners. All of our graduates find work (some are self-employed).

How much can I earn?

Salaries range from \$45,000 to \$150,000 per year.

Bachelor of Midwifery

Location	Dunedin, Christchurch or online with block courses
Duration	Three years full-time; four years part-time
Delivery	On campus in Dunedin and Christchurch OR online with block courses in Dunedin or Paraparaumu and support through satellites in Invercargill, Central Otago, Wellington, Palmerston North and Whanganui
Level	7
Credits	480
Start	End of January, 2014
Fee	Domestic: \$9,443 (first year) International: \$27,560 (first year)
Apply	Preferred by 31 August, 2013

Attain a unique and internationally-renowned qualification which leads to registration as a midwife in New Zealand. You will receive a rigorous theoretical education and gain midwifery practice experience in a variety of settings.

Note: This programme has been developed collaboratively and is jointly delivered by Otago Polytechnic and Christchurch Polytechnic Institute of Technology (CPIT). Otago Polytechnic is the provider for students in the lower halves of the North and South Islands, while CPIT delivers to those in the upper half of the South Island.

Entry requirements*

- > 42 NCEA credits at Level 3 or higher, including
 - > 14 credits in biology and/or chemistry (both would be an advantage)
 - > 14 credits in an English language-rich subject
 - > 14 credits in two additional subjects **OR** equivalent
 - > Literacy –10 credits at Level 2 or above made up of 5 credits in reading and 5 credits in writing
 - > 14 NCEA credits at Level 1 or higher in mathematics/pāngarau **OR** equivalent.
- > **International students** will be individually assessed to ensure they meet degree-level entry requirements and must have achieved the equivalent of Year 13 biology or chemistry (both would be an advantage), and Year 11 mathematics.
- > You must submit your curriculum vitae, details of referees and an essay demonstrating your commitment to midwifery and any relevant life experience.
- > You must provide a current First Aid Certificate, health declaration and permission for a police check.
- > You must have good computer skills.
- > **If English is not your first language**, you must also demonstrate English language skills equivalent to an IELTS overall band score (academic) of 7.0, with no less than 6.5 in writing and reading, and no less than 7.0 in speaking and listening.

Further study options

Develop advanced knowledge and practical skills through our postgraduate Midwifery programmes.

Continuing Education for New Zealand Midwives and Registration Competence Programme for Overseas Midwives

Location	Dunedin and online
Duration	Flexible
Delivery	Online modules; newborn assessment course requires five clinical assessments
Fee	\$1,610 (4 courses at \$402.50 each)
Start	Flexible
Apply	Anytime

The Midwifery Council of New Zealand requires midwives registering in New Zealand from overseas to undertake a registration competence programme. The Midwifery Council provides individual midwives with details of the requirements they need to meet and the time frame for completion of the programme. New Zealand registered midwives may also undertake any of these courses as part of their recertification programme. We offer four courses approved by the Midwifery Council as part of the registration competence programme.

Entry requirements

- > You must be a registered New Zealand midwife to enter any of the courses as part of your recertification programme.
- > **International students** will be individually assessed for entry, as these courses are open to overseas midwives who are registered or seeking registration with the Midwifery Council of New Zealand.
- > **If English is not your first language**, you must also demonstrate English language skills equivalent to an IELTS overall band score (academic) of 7.5, with no band score less than 7.0.

Further study options

Advance your knowledge and employment potential with our postgraduate programmes in Midwifery. We also offer online updates enabling you to examine a clinically-focused research article and explore its application to practise. Successful completion gives you one elective education point with the Midwifery Council of New Zealand.

Bridging option

Certificate in Health (Level 4)

please see "Progression to health-related degrees" on page 15.

*The entry requirements for this programme are under review for 2014. Please contact the School of Midwifery for more information.



Postgraduate Certificate in Midwifery Practice and Postgraduate Diploma in Midwifery

Location	Online
Duration	Certificate: Six months full-time; part-time options Diploma: One year full-time; part-time options
Delivery	Each course involves working through online resources and taking part in online discussions
Level	8
Credits	Postgraduate Certificate: 60, Postgraduate Diploma: 120
Start	February, May, July and September, 2014
Fee	Domestic: \$756 (per 15 credit course) International: \$11,880 (full-time Postgraduate Certificate); \$23,770 (full-time Postgraduate Diploma)
Apply	Anytime

Certificate: Undertake four courses of seven weeks each that focus on aspects of midwifery practice and critically analyse your own midwifery experiences as a means of adding depth to your knowledge base. A perfect springboard into further study, this programme allows you to start slowly and increase your qualifications as you go.

Diploma: Build on the Postgraduate Certificate in Midwifery Practice to extend your midwifery knowledge through a review of current thinking and research. Further develop your confidence and transferable skill set enabling you to work anywhere in the world. Successful completion of this Diploma contributes half the credits required for the master's degree.

Entry requirements

To enter at Certificate level

- > You must be a registered midwife and hold a bachelor's degree **OR** have relevant equivalent skills and knowledge acquired through appropriate work or professional experience.

To enter at Diploma level

- > You must be a registered midwife and hold a bachelor's degree, Postgraduate Certificate in Midwifery Practice, **OR** equivalent.

For each level

- > **International students** will be individually assessed to ensure they meet the entry requirements.
- > You must have access to the internet.
- > **If English is not your first language and you are not registered in New Zealand**, you must also demonstrate an IELTS overall band score (academic) of 6.5 in writing and reading, and no less than 7.0 in speaking and listening, with no individual score less than 6.0.

Further study options

Hone your expertise and increase your career prospects by applying for the Master of Midwifery.

Master of Midwifery

Location	Online
Duration	Two years full-time; part-time options
Delivery	Online with compulsory Dunedin-based seminars (for thesis students)
Level	9
Credits	240
Start	February and July, 2014
Fee	Domestic: \$1,499 (per 30 credit course) International: \$23,770
Apply	Anytime

This internationally-recognised programme has a strong research focus and builds on the skills and knowledge gained during the Postgraduate Diploma in Midwifery through the provision of more demanding and intensive study. You have two options for completing the programme: a midwifery dissertation or a midwifery thesis. The thesis option enables you to complete a piece of original research based on higher order skills of analysis and critical evaluation.

Entry requirements

- > You must be a registered midwife and hold a Postgraduate Diploma in Midwifery with a B grade average, **OR** equivalent.
- > **International students** will be individually assessed to ensure they meet the entry requirements.
- > You must have access to the internet.
- > **If English is not your first language and you are not registered in New Zealand**, you must demonstrate an IELTS overall band score (academic) of 6.5 in writing and reading, and no less than 7.0 in speaking and listening, with no individual score less than 6.0.

Further study options

Opportunities for further research and enrolment in PhD programmes are available elsewhere in New Zealand and overseas.

Occupational Therapy

Work as an occupational therapist to help people become involved in everyday activities and lead meaningful and satisfying lives.

As an occupational therapist, your focus is on ensuring individuals, groups and populations within the community can do the things that are important to them. You will work with a range of ages from the newborn to the elderly.

Occupational therapists work in a variety of environments, including in schools with children who need help to meet their learning needs, and in rehabilitation, hospital and private practice settings with people who have had illness, injury or a disability.

Your work as an occupational therapist could be enabling the elderly to safely return to their homes and communities or assisting people to resume employment by adapting workplaces and teaching them strategies. There are roles ensuring youth and adults with mental illness can engage effectively in everyday tasks and there is also an increasing opportunity to work with specific populations within society to strengthen local communities.

You may also help people with chronic disability and/or illness and generally promote health and well-being.

What skills do I need?

- > A passion for working with a variety of people
- > Excellent social and communication skills
- > Creative problem-solving skills
- > Leadership skills
- > The ability to work independently and as a member of a team.

What industry opportunities are there?

Occupational Therapist > Needs Assessor/Case Manager > Private Practice > Community/Youth Development Worker > Team Leader/Manager > Researcher

Our graduates gain employment within the health and well-being sector in New Zealand, and have opportunities to work internationally.

How much can I earn?

\$46,000 per year after graduation and \$69,000 to \$95,000 per year with experience.

Bachelor of Occupational Therapy

Location	Dunedin or Hamilton
Duration	Three years full-time; part-time options
Delivery	On campus with six fieldwork placements in a wide range of settings; four of these are likely to occur outside of the Dunedin or Hamilton area
Level	7
Credits	360
Start	February and July, 2014
Fee	Domestic: \$6,613 (first year) International: \$21,560 (first year)
Apply	Preferred by 21 September, 2013 and 30 May, 2014

Prepare for a career as an occupational therapist through online learning, resources and activities, face-to-face teaching, and fieldwork placements. This qualification will lead to registration as an occupational therapist in New Zealand and is recognised by the World Federation of Occupational Therapists.

Entry requirements

- > Any Level 4 qualification equalling at least 60 credits completed in one year **OR** successful completion of university courses/units equalling at least 50 per cent of a first-year student workload completed in one year **OR** NCEA credits, including
 - > 42 credits at Level 3 or higher, including a minimum of 14 credits in each of two relevant subjects
 - > 8 credits at Level 2 or higher in English and/or te reo Māori (4 credits in reading and 4 in writing)
 - > 14 credits at Level 1 or higher in mathematics/pāngarau **OR** equivalent
 - > **OR** equivalent relevant qualifications and experience.
- > **International students** will be individually assessed to ensure they meet degree-level entry requirements.
- > You must demonstrate an elementary understanding of occupational therapy practice in New Zealand.
- > You must provide a First Aid Certificate and a health declaration.
- > You must submit recommendations of suitability from two referees.
- > **If English is not your first language**, you must also demonstrate English language skills equivalent to an IELTS overall band score (academic) of 7.0, with no band score less than 6.5.

Note: An application pack will be sent to you.

Further study options

Increase your career prospects with any of our postgraduate Occupational Therapy programmes. Students who achieve a B grade average in the Bachelor of Occupational Therapy are eligible to complete a Bachelor of Occupational Therapy (Honours).

Bachelor of Occupational Therapy (Honours)

Location	Online with compulsory block courses
Duration	One year full-time
Delivery	Online with four compulsory block courses (two to three days each) in Dunedin
Level	8
Credits	120
Start	February, 2014
Fee	Domestic: \$7,412 International: \$21,560
Apply	Preferred by 31 January, 2014

Deepen your understanding of occupational therapy practice and develop your research skills. Prepare for jobs in research-orientated positions or more responsible roles in occupational therapy practice, both within New Zealand and overseas.

Entry requirements

- > You must have successfully completed a Bachelor of Occupational Therapy in New Zealand with a grade point average of 5.0 or less across three years of study, **OR** equivalent.
- > You must commence the honours programme within three years of completing the Bachelor of Occupational Therapy.
- > **International students** will be individually assessed to ensure they meet the entry requirements.
- > **If English is not your first language**, you must also demonstrate English language skills equivalent to an IELTS overall band score (academic) of 6.5, with no band score less than 6.5.

Further study options

Advance your skills with our Master of Occupational Therapy. If you achieve a first class honours degree, you may also be able to progress straight into a doctoral programme.

Bridging option

Certificate in Health (Level 4)

please see "Progression to health-related degrees" on page 15.



Postgraduate Certificate in Occupational Therapy Practice and Postgraduate Diploma in Occupational Therapy Practice

Location	Online (domestic) or Dunedin (international)
Duration	Certificate: Six months full-time; two years part-time* Diploma: One year full-time; five years part-time*
Delivery	Domestic: Online with the option of studying one or two courses in Dunedin, International: Dunedin-based, delivered via face-to-face teaching and online learning
Level	8
Credits	Postgraduate Certificate: 60, Postgraduate Diploma: 120
Start	February and July, 2014
Fee	Domestic: \$4,034 (Postgraduate Certificate), \$7,412 (Postgraduate Diploma) International: \$11,880 (Postgraduate Certificate), \$23,770 (Postgraduate Diploma)
Apply	Preferred by 31 January and 1 July*, 2014

Improve your theoretical knowledge and develop expertise in a particular area of occupational therapy practice. Staircase into the Diploma and develop the confidence to engage in evidence-based practice. Become better equipped to apply for positions that are recognised as expert clinical posts, or to move into managerial positions.

Note: It is possible to enrol in individual courses from these qualifications for professional development reasons. This option is available for occupational therapists and non-occupational therapists and you will be awarded a Certificate in Proficiency upon successful completion.

Entry requirements

- > You must hold a Diploma **OR** Bachelor of Occupational Therapy from a World Federation of Occupational Therapists (WFOT) approved programme (**OR** equivalent), **OR** a Certificate of Registration (New Zealand).
- > If you hold a Diploma or Certificate of Registration, you must also provide evidence of commitment to further education and two confidential referees attesting to your ability to manage postgraduate study.
- > You must provide evidence of registration as an occupational therapist (Annual Practising Certificate), although this can be waived in certain circumstances.
- > **International students** will be individually assessed to ensure they meet the entry requirements.
- > **If English is not your first language**, you must also demonstrate English language skills equivalent to an IELTS overall band score (academic) of 6.5, with no band score less than 6.5.

Further study options

You can choose to move into the Master of Occupational Therapy at any point as you progress through the Postgraduate Diploma courses.

*Domestic students only

Master of Occupational Therapy

Location	Online with compulsory block courses
Duration	Two years full time; four years part-time
Delivery	Online with compulsory annual attendance at a block course in Dunedin (three days)
Level	9
Credits	240
Start	February and July, 2014 (or on a negotiated date)
Fee	Domestic: \$7,412 International: \$23,770
Apply	Preferred by 31 January and 1 July, 2014

Undertake this qualification of excellence and develop your professional practice and research skills to a very high level. Gain an in-depth understanding of a specific aspect of occupational therapy knowledge and build a broad range of research to justify your practice. Acquire the confidence to systematically plan and carry out detailed research to internationally-recognised standards. Choose to complete your qualification through coursework and a project or by the research thesis option.

Entry requirements

To enter the first year of the Master:

- > You must meet the entry requirements stated for the Postgraduate Diploma in Occupational Therapy (see opposite column).

To enter the second year of the Master:

- > You must hold a Postgraduate Diploma in Occupational Therapy Practice, with a B grade average across your three best courses, **OR** equivalent
- > **OR** you must have successfully completed a Bachelor of Occupational Therapy with Honours endorsed second class, **OR** equivalent.
- > **International students** will be individually assessed to ensure they meet the entry requirements.
- > **If English is not your first language**, you must also demonstrate English language skills equivalent to an IELTS overall band score (academic) of 6.5, with no band score less than 6.5.

Further study options

Continue learning and apply for PhD programmes in New Zealand and abroad.

Social Services

You can select from a wide range of social services careers, each focused on helping people to improve their quality of life.

There are opportunities to work for social services agencies and in career practice, counselling, disability and mental health support. Responsibilities may include offering support and guidance to clients, planning activities, working directly with families, groups and organisations, and running educational workshops.

What skills do I need?

- > Objectivity, responsibility, positivity and approachability
- > Good communication skills
- > Patience and calm manner
- > A genuine interest in helping people
- > Ability to be responsive to clients.

What industry opportunities are there?

Mental health advocate/worker > Disability support advocate/worker > Community/social services work > Counsellor > Career practitioner.

The demand for skilled people in the community services industries is likely to remain strong – New Zealand faces a growing and ageing population and many agencies exist to address a wide range of social issues.

How much can I earn?

Salaries vary, but usually begin between \$20,000 and \$50,000 per year, depending on experience and qualifications.



Certificate in Human Services (Level 4) (Specialty)

Including the embedded national awards

- > National Certificate in Mental Health and Addiction Support (Level 4)
- > National Certificate in Community Support Services (Disability Information Provision) (Level 4)
- > National Certificate in Social Services (Level 4)

Location	Dunedin
Duration	One year full-time; two years part-time
Delivery	Face-to-face and online learning, practical sessions and fieldwork placements Online delivery available by negotiation (requires a minimum cohort of four students)
Level	4
Credits	120
Start	February, 2014
Fee	Domestic: \$5,851 International: \$19,710
Apply	Preferred by 30 November, 2013

Gain the knowledge, skills and values required to work in human services in Aotearoa New Zealand and overseas. Grounded in a social justice and human rights perspective, you can specialise in mental health, disability support or social services. Develop academic and computer literacy skills, and the confidence to continue on to further study.

Entry requirements

- > Open entry but you must
 - > disclose any criminal convictions before commencing the programme, and
 - > give permission for a police check before going on your work placement.
- > You will also take part in an informal discussion with the Programme Manager to check your readiness to engage with the programme.
- > **If English is not your first language**, you must demonstrate English language skills equivalent to an IELTS overall band score (academic) of 6.0, with no less than 6.0 in writing and speaking, and no less than 5.5 in reading and listening, and meet your country-specific equivalent entry requirements listed on pages 82–85.

Note: An application pack will be sent to you.

Further study options

Expand your employment potential with our Bachelor of Social Services.

Bachelor of Social Services Counselling; Career Practice; Social Services

Including an exit qualification available after two years full-time, or four years part-time study

- > Diploma in Social Services (Level 6): Disability Support, Mental Health Support

Location	Dunedin
Duration	Three years full-time; up to six years part-time
Level	7
Delivery	On campus with fieldwork placements
Credits	360
Start	February, 2014
Fee	Domestic: \$6,090 (first year) International: \$20,480 (first year)
Apply	Preferred by 30 November, 2013

Attain the knowledge and skills required to become a competent social services professional in New Zealand and overseas. Gain a solid foundation in various aspects of the field during year one before choosing to specialise in career practice, counselling, mental health or disability support. Mental health and disability students have the option of an exit diploma at the end of the second year, or can progress into the year three social services specialty. Working with clients is a core component of this programme and gives you the chance to increase your work-readiness.

Note: The number of students accepted into each specialty will be determined by the number of placements available. If there are more applicants than places in a particular specialty, a selection process will apply. Due to the limited numbers, we unfortunately cannot guarantee your choice of specialty.

Entry requirements

- > 42 NCEA credits at Level 3 or higher (preferably in English-rich subjects) **OR** equivalent experience/qualifications.
- > **International students** will be individually assessed to ensure they meet degree-level entry requirements.
- > You must demonstrate relevant life/work experience.
- > You must submit references and a health declaration.
- > You must declare any criminal convictions and give permission for a police check.
- > **If English is not your first language**, you must also demonstrate English language skills equivalent to an IELTS overall band score (academic) of 6.5, with no band score less than 6.5.

Note: An application pack will be sent to you and you will be asked to indicate which specialty area(s) you are most interested in.

Further study options

Increase your career prospects with postgraduate study at Waikato, Massey or Auckland Universities.

Bridging options

The **Certificate in Human Services (Level 4)** (see this page) and the **Certificate in Health (Level 4)** are suitable bridging options for this programme (see page 15).

Creative Careers

Art

Design

Communications, Interiors, Fashion,
Product and Creative Studies

Creative people design the practical things that make our lives better. They also create the beautiful, interesting and challenging things that make our environments unique.

Not quite ready to launch into a Creative career?
See page 26 for our Certificate in Creative Studies.



"Fractals", Lynda Orr, 2012 (BVA)



"I focused on electronic arts and found that the lecturers were experienced and helpful, and the studios were well equipped. We were given plenty of time and space to create 3D animations and graphics."

James Doyle, Weta Digital
Bachelor of Fine Arts*

*We now offer the Bachelor of Visual Arts in place of the Bachelor of Fine Arts.



Portfolios

Preparing your application

To show your ability and scholarship in art and design, you will be required to submit a portfolio and a letter of motivation.

The portfolio should reflect your creative achievements, potential and commitment. We are looking for evidence that you can be original, versatile and enterprising, and that you are committed to study in your area. The portfolio:

- > Should demonstrate a solid foundation in design/art/creative disciplines and support your application for your area of study
- > May include photography, painting, graphic work, images of garments, 3D design, sketches and whatever you feel is visually informative about you and your abilities
- > Must include two or three process works that demonstrate the development of an idea.

Submission format

Art: If you have been working in the NCEA system, please send us 12 examples of your finished works and of your working processes from your folders.

If you have not been working in the NCEA system, please send us six examples of finished work and six pages of sketches or workbook pages.

Please submit your portfolio digitally or in an A4 folder. Please do not submit originals as we do not return application folders.

Design: Choose a maximum of 10 works showing a variation of interest. The portfolio should be in a format appropriate to the work you are showing, i.e. digital (CD), a physical copy or a scanned document in an email.

Your letter of motivation

Explain why you have chosen to apply for your selected programme. This letter should communicate your interest in the discipline and discuss what steps you have already taken to increase your chances of being accepted. Please include your career goals in this letter.

Art applicants are also asked to include an essay or written text of at least 300 words. You may include writing produced for any of your NCEA subjects or if you don't have these, you may write a new piece on a topic of your choice.

Note: Application requirements may differ for postgraduate art or design programmes.

For more information visit www.op.ac.nz/art or www.op.ac.nz/design

Certificate in Creative Studies

Location	Dunedin
Duration	One year full-time; two years part-time
Delivery	On campus; some courses are also available in Central Otago
Level	4
Credits	60
Start	February, 2014
Fee	Domestic: \$6,507 International: \$19,710
Apply	Preferred by 30 November, 2013

If you are not sure which creative career to pursue or you want to develop a portfolio for application to a degree, this programme is for you. Gain a foundation in drawing and mixed media, creative process, digital design and choose from a range of Fashion, Product, Interiors and Communication Design, Visual Arts and Information Technology options.

Entry requirements

There are no academic entry requirements. However, we do prefer applicants to have:

- > NCEA Level 1 or equivalent.
- > **International students** will be individually assessed to ensure they have an acceptable level of secondary school achievement.
- > You must submit a portfolio of work, a letter of introduction and motivation, and a curriculum vitae to be considered as part of a selection process.
- > **If English is not your first language**, you must also demonstrate English language skills equivalent to an IELTS overall band score (academic) of 6.0, with no less than 6.0 in writing and speaking, and no less than 5.5 in reading and listening.

Further study options

Take your creativity to the next level with one of our degree programmes in Design (Product, Interiors, Fashion and Communication), Arts or Information Technology.



Art

Art sustains, enhances and reflects the society it comes from. As an artist, you have the opportunity to make a strong and vital contribution to contemporary life.

The Dunedin School of Art has the distinction of being the first art school in New Zealand. Since it was established in 1870, it has educated and encouraged students to become strong individuals able to make their own way in the world – not only in art, but in many other fields of visual culture. Students experience excellent studio-based teaching in a nationally unique range of workshop facilities. There is a focus on individual supervision and student-centred learning supported by an active community of artists to enhance professional development. Our lecturers have national and international profiles and demonstrate a diverse range of approaches and understandings in the fine arts and design.

Our graduates work in all fields of art, often complementing their own practice with curatorial work, teaching, public art projects, design projects or arts access work. The skills they learn are transferable to a wide variety of employment situations.

What skills do I need?

- > Creativity and imagination
- > The ability to think laterally and independently
- > Motivation and a good work ethic
- > Confidence and the ability to accept criticism
- > Adaptability and open mindedness.

What industry opportunities are there?

The ability to understand and use your creativity allows you to contribute significantly to your community in both expected and unexpected ways. Our graduates are vital, happy and successful people who can be both practical and visionary. These attributes are highly valued in a variety of fields including the art world, education, design, management and marketing.

Our graduates may become practising artists in various disciplines and media, and/or enter a wide range of professions including

Art Director (film/video/print) > Art Dealer > Art Critic > Art Therapist > Artists' Agent > Curator > Lecturer > Illustrator > Designer > Photojournalist > Prop Maker > Researcher > Set Designer > Sign Writer > Colour Consultant.

Specialist Studio Disciplines

Ceramics

Study ceramics as a contemporary art practice at the Dunedin School of Art at Otago Polytechnic – the largest ceramics department in New Zealand. You will benefit from an emphasis on hands-on experimentation in clay-making workshops. Develop individual projects which explore ceramics as a medium with its own formal language, skills and history. The studio has wood, salt, electric and gas kilns, electric wheels and an online research facility.

Electronic Arts

Electronic arts inhabit a constantly shifting location in art and media practices. You may choose to explore 2D and 3D animation, film, installation, electronics, audio/video production and projection, and online media. Through the study of contemporary practice, you will engage with media arts and reflect on their historical and contemporary position in the art world.

Jewellery and Metalsmithing

Develop your artistic eye and practical skills with the understanding that the fundamental reference for jewellery is the human body. Jewellery uses a visual language based on interaction, communication and contact, and may be expressive and intimate or aggressively provocative. Art, objects and adornment for the body use an unlimited palette of materials from precious metal and stone to recycled waste.

Painting

Here is an opportunity to develop your artwork so it is relevant to today's society and to international and national contemporary practice. You will also be encouraged to investigate painting discoveries and methodologies in recent centuries. Each stage of the programme presents an organised and measured understanding of the techniques, theories and approaches available to the artist today.

Photography

Gain a solid foundation in the practical and theoretical components of black and white, colour and alternative photographic processes.

Use and explore a range of equipment and techniques in our well-designed facility. Understand the principles and history of photography as you study different photographic approaches, such as antiquarian, formalist, documentary, fabricated or manipulated. The learning environment is both supportive and challenging, incorporating discussion, dialogue and critical debate.

Print

Our internationally renowned print studio is well established and one of the leading departments of its kind in New Zealand. You will work and learn in its spacious studios and well-equipped workshops, designed to enable students, staff and professional artists to study and practise a comprehensive range of printmaking processes and related techniques. Experienced and award-winning staff members monitor these programmes which help you research, explore and develop creative concepts.

Sculpture

Develop a sculptural language through studio workshops focusing on drawing, form and spatial analysis. This studio is equipped to international standards with separate workshops for wood, metal and plastics fabrication, a modelling and casting studio and specialist facilities for ceramic shell bronze casting, metal forging, vacuum forming and spray painting. An emphasis is placed on the philosophical understanding of historical approaches and the means for the development of different formats in individual mediums.

Textiles

Explore textiles in a visual arts context, examining the value of cloth and its relationship to the body, different genders and classes, and material culture. The field of textile practice can encompass many approaches such as sculptural, 2D and site-specific artworks. We specialise in print and construction processes that employ a variety of surface treatments, such as screen-print methodologies using pigment ink, dye, discharge and burnout applications, manual and digital embroidery, and 3D sewing.



Bachelor of Visual Arts

Location	Dunedin
Duration	Three years full-time
Delivery	On campus
Level	7
Credits	360
Start	February, 2014
Fee	Domestic: \$6,406 (first year) International: \$20,750 (first year)
Apply	Preferred by 1 November, 2013

Become an independent and creative maker, thinker and agent as you select from a range of subjects in the first semester and then begin to specialise. Through directed and independent learning, you will develop technical, academic and personal skills enabling you to pursue a career as an independent artist or researcher.

Entry requirements

- > Five years of secondary school education.
- > 42 NCEA credits at Level 3 or higher including English, art, art history or similar **OR** equivalent.
- > **If you do not hold the above qualifications**, you must demonstrate appropriate ability through a portfolio and associated writings.
- > **International students** will be individually assessed to ensure they meet degree-level entry requirements and must have achieved the equivalent of Year 13.
- > You must submit a portfolio.
- > **If English is not your first language**, you must also demonstrate English language skills equivalent to an IELTS overall band score (academic) of 6.0, with no band score less than 6.0.

Note: An application pack will be sent to you.

Further study options

Advance your artistic talent with our Bachelor of Visual Arts (Honours), Postgraduate Diploma in Visual Arts, Master of Visual Arts or Master of Fine Arts.

Diploma in Ceramic Arts (Level 6) and (Level 7)

Location	Domestic: Online with practical classes International: Dunedin
Duration	Level 6: Two years, full-time, up to eight years part-time Level 7: One year, full-time
Delivery	Domestic: Online theory papers with practical classes at various New Zealand locations*, OR alongside an established master potter International: on campus with practical sessions
Level	6 and 7
Credits	Level 6 240; Level 7 120
Start	February, 2014
Fee	Domestic: \$6,130 (first year) International: \$20,750 (first year)
Apply	Preferred by 1 November, 2013

Undertake New Zealand's only specialised tertiary programme in ceramic arts, which combines a wide range of practices and techniques for creating an array of forms and imagery for both functional ware and concept-based experimental work.

Entry requirements

Level 6: Four years of secondary school education, with a minimum of 48 NCEA Level 2 credits across four subjects, **OR** equivalent qualifications and experience. Demonstrate interest in art evidenced by the submission of a portfolio of work.

Level 7: Completion of the Diploma in Ceramics (Level 6) or equivalent qualification and/or experience, **AND** submission of a portfolio of work.

- > **International students** will be individually assessed to ensure they have an acceptable level of secondary school achievement.
- > You must demonstrate an interest in art.
- > You must submit a portfolio and undertake an interview.
- > **If English is not your first language, Level 6:** You must also demonstrate English language skills equivalent to an IELTS overall band score (academic) of 5.5, with no band score less than 5.5. **Level 7:** You must demonstrate English language skills equivalent to an IELTS overall band score (academic) of 6.0, with no band score less than 5.5.

Further study options

Advance your skills with our Bachelor of Visual Arts, Graduate Diploma in Visual Arts, Postgraduate Diploma in Visual Arts, Master of Visual Arts or Master of Fine Arts.

Graduate Diploma in Visual Arts

Location	Dunedin
Duration	One year full-time; two years part-time
Delivery	On campus
Level	7
Credits	120
Start	February and July, 2014
Fee	Domestic: \$6,406 International: \$20,750
Apply	Preferred by 1 November, 2013 and 31 May, 2014

If you already hold a degree and would like to develop your fine arts skills, this programme offers you the opportunity to carry out an intensive, personalised course of study. A team of advisors will help you determine a pathway of study suited to your goals and requirements.

Entry requirements

- > You must demonstrate practical, professional or educational experience equivalent to a bachelor's degree **OR** other Level 7 qualification.
- > As the majority of this qualification is taught at Level 7, you must demonstrate studio skills beyond year one level to enter this programme.
- > **International students** will be individually assessed to ensure they meet the entry requirements.
- > You must submit a portfolio and undertake an interview.
- > **If English is not your first language**, you must also demonstrate English language skills equivalent to an IELTS overall band score (academic) of 6.0, with no band score less than 6.0.

Further study options

Continue your study and expand your employment potential with our Master of Fine Arts programme.

*Auckland, Hamilton, Wellington, Otaki, Hawkes Bay, Nelson Christchurch or Dunedin.



Applying for postgraduate programmes

Please visit the Dunedin School of Art website to find more detailed information about the curriculum vitae, annotated portfolio and project proposal that you must submit along with your application: www.op.ac.nz/art

You need to apply online for any postgraduate art programme.

Bachelor of Visual Arts (Honours)

Location	Dunedin
Duration	One year full-time; two years part-time
Delivery	On campus
Level	8
Credits	120
Start	February, 2014
Fee	Domestic: \$9,634 International: \$23,770
Apply	Preferred by 30 November, 2013

Undertake this research-based qualification to further develop your undergraduate knowledge. Ideal if you wish to pursue further study, the programme culminates in an exhibition and associated writings demonstrating your intellectual rigour and professional expertise. Better understanding and advanced learning will present you with higher-level employment prospects in the arts and creative sectors.

Entry requirements

- > You must hold a Bachelor of Visual Arts (Level 7) **OR** any equivalent qualification at a bachelor's level or above, with an overall grade of B (70%) or higher in your final year studio and essay papers.
- > **International students** will be individually assessed to ensure they meet the entry requirements.
- > Normally, commencement of Honours study must occur within five years of the successful completion of your degree. Exceptions will require the approval of the postgraduate coordinator.
- > You must submit an annotated portfolio, curriculum vitae and a project proposal.
- > Selection for admission includes an interview.
- > **If you do not hold the above qualifications**, you must demonstrate appropriate ability through a portfolio and associated writings which will be approved by the Postgraduate Admissions Committee.
- > **If English is not your first language**, you must also demonstrate English language skills equivalent to an IELTS overall band score (academic) of 6.5, with no band score less than 6.0.

Note: An application pack will be sent to you.

Further study options

Enhance your employment prospects with the Master of Visual Arts or Master of Fine Arts.

Postgraduate Certificate in Visual Arts and Postgraduate Diploma in Visual Arts

Location	Dunedin
Duration	Postgraduate Certificate: Six months full-time; one year part-time Postgraduate Diploma: One year full-time; two years part-time
Delivery	On campus
Level	8
Credits	Postgraduate Certificate: 60, Postgraduate Diploma: 120
Start	Postgraduate Certificate: February and July, 2014 Postgraduate Diploma: February, 2014
Fee	Domestic: \$5,145 (Postgraduate Certificate); \$9,634 (Postgraduate Diploma) International: \$11,885 (Postgraduate Certificate); \$23,770 (Postgraduate Diploma)
Apply	Preferred by 30 November, 2013 or 31 May, 2014

Certificate: Ideal if you left structured learning some time ago and now wish to start postgraduate research. With guidance and support, you will develop a body of critically-engaged studio work and write a set essay on an aspect of related research methodologies. You may transfer to the second semester of the Diploma upon the successful completion of this programme.

Diploma: Embark on this guided research programme to further develop your undergraduate skills, knowledge and experience in your chosen field. Create a systematic and professionally exhibited body of work supported by a written text which demonstrates contemporary relevance.

Entry requirements

- > You must have completed a Bachelor of Visual Arts (Level 7) **OR** equivalent qualification at a bachelor's level, **OR** any other undergraduate degree in a relevant discipline.
- > **International students** will be individually assessed to ensure they meet the entry requirements.
- > Exceptional applicants not meeting the entry requirements but with appropriate documented professional experience may also be considered.
- > You must submit an annotated portfolio, curriculum vitae and a project proposal.
- > Selection for admission includes an interview.
- > **If you do not hold the above qualifications**, you must demonstrate appropriate ability through a portfolio and associated writings which will be approved by the Postgraduate Admissions Committee.
- > **If English is not your first language**, you must also demonstrate English language skills equivalent to an IELTS overall band score (academic) of 6.5, with no band score less than 6.0.

Note: An application pack will be sent to you.

Further study options

Expand your employment potential with our Master of Visual Arts or Master of Fine Arts.



Master of Visual Arts

Location	Dunedin
Duration	Two years full-time (including a Level 8 postgraduate qualification); part-time option available
Delivery	On campus
Level	9
Credits	120
Start	February and November, 2014
Fee	Domestic: \$9,634 (year one) International: \$23,770
Apply	Preferred by 15 November, 2013 and 31 May, 2014

Develop and display mastery of the professional, technical and conceptual skills relevant to your chosen field through an original exhibition and associated writing. Gain a deeper understanding through practical and theory-based research to provide you with higher employment opportunities in the arts sector.

Entry requirements

- > You must have successfully completed the Bachelor of Visual Arts (Honours) (Level 8) **OR** the Postgraduate Diploma in Visual Arts (Level 8), **OR** an equivalent postgraduate qualification worth 120 credits in a related area.
- > **International students** will be individually assessed to ensure they meet the entry requirements.
- > You must submit an annotated portfolio, curriculum vitae and a project proposal, including an annotated bibliography.
- > Selection for admission includes an interview.
- > **If you do not hold the above qualifications**, you must demonstrate appropriate ability through a portfolio and associated writings.
- > **If English is not your first language**, you must also demonstrate English language skills equivalent to an IELTS overall band score (academic) of 6.5, with no band score less than 6.0.

Note: An application pack will be sent to you.

Further study options

A transfer to the first year of the Master of Fine Arts programme may be possible after the completion of the first semester Level 9 review.

Master of Fine Arts

Location	Dunedin
Duration	Two years full-time; up to four years part-time*
Delivery	On campus
Level	9
Credits	240
Start	March and September, 2014
Fee	Domestic: \$9,638 (year one) International: \$23,770
Apply	Preferred by 15 November, 2013 and 15 June, 2014

Progress further as an arts practitioner or expand your employment potential with this applied, in-depth research degree. Benchmarked against national and international standards, this programme is shaped by your proposal and culminates in a public exhibition and dissertation reflecting your knowledge and competence. Acquire the necessary qualification for a career in tertiary teaching, writing or critiquing, museum or gallery curatorship, or creative work in art studios.

Entry requirements

- > You must hold a recognised bachelor's degree in fine arts **OR** an equivalent four year programme with at least a B grade average. Three year undergraduate degrees may be considered but you must have achieved an A pass average in the major subject.
- > **International students** will be individually assessed to ensure they meet the entry requirements.
- > You must submit an annotated portfolio, curriculum vitae and a research proposal, including an annotated bibliography.
- > Selection for admission includes an interview.
- > **If you do not hold the above qualifications**, you must demonstrate appropriate ability through a current portfolio and a related project proposal which will be approved by the Master of Fine Arts Admissions Committee.
- > **If English is not your first language**, you must also demonstrate English language skills equivalent to an IELTS overall band score (academic) of 6.5, with no band score less than 6.0.

Note: An application pack will be sent to you.

Further study options

Enhance your career prospects with doctorate-level studies here or abroad.

*Flexible movement between these two options is possible

Design

New Zealand's future is being designed by people like you. With a qualification in design, you can play your part by developing new products, innovating, tackling social issues and creating commercial successes.

Designers work in a broad range of creative areas and for a variety of companies. As well as being interior, product, fashion or communication designers, design graduates can become team players and business directors who use their creativity to challenge the status quo. Design graduates have the skills to think and act outside the box to find solutions to material problems and communicate new and exciting ideas to others. A design qualification will open the doors to an endless array of opportunities. You may find yourself in an exciting industry you never imagined (it might not even exist yet!)

What skills do I need?

- > Creativity
- > A passion for design
- > The ability to see an idea through from concept to reality
- > Vision

- > The ability to communicate your ideas to others
- > Practical ability
- > An interest in people and the world around you
- > An enjoyment of working with others.

What industry opportunities are there?

Designers work in various dynamic fields, and career opportunities are ever-changing and diverse. Our graduates enter a wide range of professions, such as

Product Designer/Developer > Lighting Designer > Furniture Designer > Fashion Designer, Journalist or Buyer > Stylist > Patternmaker > Knitwear Designer > Costume Designer for Film/Theatre/Television > Technology Teacher > CAD Specialist > Visualisation Specialist > Interior Designer > Illustrator > Exhibition Designer > Stage Designer > Graphic Designer > Film-maker > Magazine Art Director > Web/Interactive Designer > Animator > Design Writer/Editor > Production Manager > Design Company Director.

How much can I earn?

Salaries vary depending on experience and the industry in which you work. A designer can earn \$30,000 per year in a starting role and up to \$75,000 per year in a more senior position.



Certificate in Fashion Studies (Level 4)

Location	Dunedin
Duration	One semester full-time; one year part-time
Delivery	On campus
Level	4
Credits	60
Start	February and July, 2014
Fee	Domestic: \$3,632 International: \$9,880
Apply	Preferred by 30 November, 2013 and 1 June, 2014

Develop the design and technical skills, knowledge and industry awareness necessary to study for the Bachelor of Design (Fashion), or to gain entry level employment in the fashion industry. Undertake an integrated fashion project and choose from a wide range of fashion-related areas such as web design, jewellery, fashion accessories, photography and textiles.

Entry requirements

- > NCEA Level 1 or equivalent.
- > **International students** will be individually assessed to ensure they have an acceptable level of secondary school achievement.
- > You must submit a letter of introduction and motivation and a curriculum vitae to be considered as part of a selection process.
- > **If English is not your first language**, you must also demonstrate English language skills equivalent to an IELTS overall band score (academic) of 6.0, with no less than 6.0 in writing and speaking, and no less than 5.5 in reading and listening.

Entry requirements for our Bachelor of Design programmes

The following entry requirements apply to our Bachelor of Design (Fashion), (Product), (Communication) and (Interiors):

- > 42 NCEA credits at Level 3 or higher across four subjects.
- > 8 NCEA credits at Level 2 or higher in English or te reo Māori (at least 4 credits in reading and 4 in writing).
- > 14 NCEA credits at Level 1 or higher in mathematics/pāngarau.
- > **International students** will be individually assessed to ensure they meet degree-level entry requirements.
- > **If you do not hold the above qualifications**, you must demonstrate equivalent qualifications/experience. Mature applicants are encouraged to apply.
- > You must submit a portfolio and may have to undertake an interview.
- > **If English is not your first language**, you must also demonstrate English language skills equivalent to an IELTS overall band score (academic) of 6.0, with no less than 6.0 in writing and speaking, and no less than 5.5 in reading and listening.

Bachelor of Design (Fashion)

Location	Dunedin (full degree), Tauranga (third year only)
Duration	Three years full-time; five years part-time
Delivery	On campus
Level	7
Credits	360
Start	February, 2014
Fee	Domestic: \$6,608 (first year) International: \$20,750 (first year)
Apply	Preferred by 30 November, 2013

Make a major contribution to the growth and direction of the New Zealand fashion industry. Enjoy a balanced curriculum of taught content and studio-based project work in a creative and stimulating programme with strong international fashion connections.

Further study options

Increase your career prospects with our graduate or postgraduate qualifications in Design or Art, or graduate teacher-training programmes.

Bachelor of Design (Product)

Location	Dunedin
Duration	Three years full-time; five years part-time
Delivery	On campus
Level	7
Credits	360
Start	February, 2014
Fee	Domestic: \$6,608 (first year) International: \$20,750 (first year)
Apply	Preferred by 30 November, 2013

Interested in a human-centred and sustainable approach to the design of products, services and systems for commercial, industry and community use? Explore human-centred approaches, sustainability frameworks, manufacturing processes and aesthetic considerations to enhance your product and service ideas. Enjoy designing a wide range of products and services such as lighting, jewellery and sports gear.

Further study options

Expand your employment potential with our graduate or postgraduate qualifications in Design or Art, or graduate teacher-training programmes.

Bachelor of Design (Communication)

Location	Dunedin
Duration	Three years full-time; five years part-time
Delivery	On campus
Level	7
Credits	360
Start	February, 2014
Fee	Domestic: \$6,608 (first year) International: \$20,750 (first year)
Apply	Preferred by 30 November, 2013

Tell stories, craft ideas in words and images, present concepts and work in multidisciplinary teams. Once known as graphic design, Communication Design now encompasses a wide range of media and processes such as image making, web design, packaging design, animation, short film-making, branding and advertising.

Further study options

Embrace further learning with our graduate or postgraduate programmes in Design, Art or Information Technology.

Bachelor of Design (Interiors)

Location	Dunedin
Duration	Three years full-time; five years part-time
Delivery	On campus
Level	7
Credits	360
Start	February, 2014
Fee	Domestic: \$6,608 (first year) International: \$20,750 (first year)
Apply	Preferred by 30 November, 2013

Plan and create public and private interiors with consideration for spatial, physical, functional, social, psychological and aesthetic requirements. Enjoy a practical, industry-focused approach to the unique history, context and philosophy of this field of design.

Further study options

Build upon your existing abilities with our graduate or postgraduate programmes in Design or Art.



Graduate Diploma in Design (Specialty)

Location	Dunedin
Duration	One year full-time; up to two years part-time
Delivery	On campus
Level	7
Credits	120
Start	February, 2014
Fee	Domestic: \$6,608 International: \$20,750
Apply	Preferred by 30 November, 2013

Achieve an applied qualification to complement your degree in a specialist area of design. This programme is ideal if you are a professional designer or practitioner wishing to develop applied skills and studio project experience to build on your existing knowledge and practice.

Entry requirements

- > You must hold a recognised undergraduate degree in a design- or art-related field **OR** equivalent practical professional or scholarly experience.
- > **International students** must hold a recognised bachelor's degree in a design- or art-related field **OR** equivalent practical, professional or scholarly experience.
- > You must submit a portfolio and a letter explaining your interests and motivation.
- > **If English is not your first language**, you must also demonstrate English language skills equivalent to an IELTS overall band score (academic) of 6.0, with no band score less than 6.0.

Further study options

Acquire further skills and broaden your career options through our postgraduate programmes in Design or Art, or our graduate teaching programmes.

Master of Design Enterprise

Location	Dunedin
Duration	Two years full-time**
Delivery	On campus; options for studying from a distance are available by negotiation
Level	9
Credits	240
Start	April, 2014
Fee	Domestic: \$6,661 (first year) International: \$23,770
Apply	Preferred by 1 March, 2014

Creativity, innovation and entrepreneurship are essential elements of this unique, industry-leading programme of scholarship and applied research. Encompassing design, creativity and strategy, enterprise, business and marketing, and production, operations and manufacturing, you will engage in industry-based research tailored to your particular needs. Multidisciplinary design interaction, criticism and debate are promoted to enhance students' creative abilities and perspectives.

Entry requirements

- > You must have a recognised bachelor's degree in a design- or art-related field **OR** degree-equivalent practical, professional or scholarly experience.
- > You must also have industry-related experience, working in business, production or design-related work.
- > **International students** will be individually assessed to ensure they meet the entry requirements.
- > You must include a portfolio, comprised of words and images that visually demonstrate your design ability and enterprise interest or aspirations.
- > You must undertake an interview.
- > **If English is not your first language**, you must also demonstrate English language skills equivalent to an IELTS overall band score (academic) of 6.0, with no band score less than 6.0.

Further study options

Expand your employment potential with doctoral programmes in Design.

**If the study path is broken, you may continue study at any point, provided the programme is completed within six years of first enrolling in the qualification.

Hospitality Careers

Cookery and Culinary Arts
Food and Beverage Service
Hospitality Management

Hospitality is the largest industry in the world; a qualification in this area is your passport to live and work across New Zealand, or practically anywhere else on the globe.

Not quite ready to launch into a career in Hospitality?
See pages 8–9 for Foundation Studies options.



“Our assignments inspire us to discover what’s happening in the ever-changing field of culinary arts. The creative expression and challenge of creating memorable dining experiences appealed to me.”

Nicholas Ronke
Bachelor of Culinary Arts



Cookery and Culinary Arts

Cookery graduates are in demand all around the world. Opportunities exist in cafés and restaurants, hospitals, catering operations, function centres and even oil rigs, super yachts and cruise ships!

Advance your study in the fields of culinary arts and be well equipped to make your mark on the industry as an entrepreneur, artisan food producer, cutting-edge chef or food writer and promoter.

What skills do I need?

- > Creativity
- > The ability to work well under pressure
- > Motivation and a good work ethic
- > A willingness to try new things and continually update your skills.

What opportunities are there in the industry?

Restaurants, bars and cafes > Catering services >
Self-employment > Business management >
Artisan food production > Food media > Teaching.

How much can I earn?

Head chefs earn an average of \$53,000 per year, while the average income for a sous chef is \$44,000. In top restaurants, great chefs can command high salaries.



"Smoked Salmon and Blood Orange Granita"
Designed and cooked by: Rosie Soper (Year 1 BCA)
Photo: Steve Ellwood



National Certificate in Hospitality (Basic Cookery) (Level 3)

Location	Central Otago
Duration	May–September, part-time
Delivery	On campus; taught on Mondays and Tuesdays
Level	3
Credits	70
Start	May, 2014
Fee	Domestic: \$4,549 International: \$11,440
Apply	Preferred by 31 March, 2014

Enhance your knowledge and practical skills and go further in the hospitality industry. Learn food preparation, cookery techniques and presentation skills, and study nutrition, basic employment law and health and safety legislation. A “paddock to plate” approach ensures students can make the most of Central Otago’s natural bounty.

Entry requirements

- > There are no academic entry requirements.
- > **If English is not your first language**, you must demonstrate English language skills equivalent to an IELTS overall band score (academic) of 6.0, with no less than 6.0 in writing and speaking, and no less than 5.5 in reading and listening, and meet your country-specific equivalent entry requirements listed on pages 82–85.

Further study options

Advance your cookery skills with our Diploma in Professional Cookery (Level 5) or Bachelor of Culinary Arts.

Certificate in Cookery (Level 3)

Location	Dunedin or Central Otago
Duration	Dunedin: One year full-time Central Otago: Part-year, part-time (domestic students only)
Delivery	On campus with a work placement at a local business
Level	3
Credits	120
Start	February, 2014
Fee	Domestic: \$6,746 (Dunedin); \$6,666 (Central Otago) International: \$19,240 (full-time)
Apply	Dunedin: Preferred by 31 October, 2013 Central Otago: Preferred by 15 January, 2014

Equip yourself with the basic skills you need to work safely in a commercial kitchen preparing, cooking and finishing a range of dishes. You will gain valuable work experience in one of Otago Polytechnic’s training restaurants and have the opportunity to sit the City and Guilds Certificate in Food Preparation and Cookery (additional charge applies).

Note: This programme includes provision for the National Certificate in Hospitality (Basic Cookery) (Level 3).

Entry requirements

- > There are no academic entry requirements, but you must submit a letter of application and undertake an interview if requested.
- > **If English is not your first language**, you must also demonstrate English language skills equivalent to an IELTS overall band score (academic) of 6.0, with no less than 6.0 in writing and speaking, and no less than 5.5 in reading and listening, and meet your country-specific equivalent entry requirements listed on pages 82–85.

Further study options

Advance your cookery skills with our Central Otago-based Diploma in Professional Cookery (Level 5) or Dunedin-based Bachelor of Culinary Arts.

Diploma in Professional Cookery (Level 5)

Location	Central Otago
Duration	One year full-time
Delivery	On campus
Level	5
Credits	120
Start	February and July, 2014
Fee	Domestic: \$6,692 International: \$19,240
Apply	Anytime

Concentrate on advanced cookery skills and learn sound kitchen management and administration processes. Develop your skills in menu design with a focus on working with local produce, and prepare and serve your food in real industry situations. A “paddock to plate” approach ensures students can make the most of Central Otago’s natural bounty.

Note: This programme includes the National Certificate in Hospitality (Professional Cookery) (Level 4) and the City and Guilds International Diploma in Food Preparation and Cooking (Culinary Arts). We also offer an 18-month programme that includes the Certificate in Cookery (Level 3). Please contact us for more information.

Entry requirements

- > You must have achieved the Certificate in Cookery (Level 3) **OR** an equivalent qualification.
- > **International students** will be individually assessed to ensure they meet the entry requirements.
- > **If English is not your first language**, you must also demonstrate an IELTS overall band score (academic) of 6.0, with no band score less than 6.0.

Further study options

Enhance your employment potential by studying the Bachelor of Culinary Arts at the Dunedin campus.

Bachelor of Culinary Arts

Location	Dunedin
Duration	Three years full-time*
Delivery	On campus with practical sessions in our training restaurant
Level	7
Credits	360
Start	February, 2014
Fee	Domestic: \$6,316 (first year) International: \$20,750 (first year)
Apply	Preferred by 31 October, 2013

Embark on this world-leading qualification – the only one of its kind in the southern hemisphere – if you wish to pursue advanced, applied study in culinary arts and food production. With an emphasis on creativity and problem-solving you can focus on one of five specialties: Restaurant/Hotel Chef, Artisan Producer, Management, Media and Technology or Tertiary Teacher.

Entry requirements

- > 42 NCEA credits at Level 3 or higher across four subjects.
- > 8 NCEA credits at Level 2 or higher in English-rich subjects or te reo Māori (4 credits in reading and 4 in writing).
- > 14 NCEA credits at Level 1 or higher in mathematics/pāngarau.
- > **International students** will be individually assessed to ensure they meet degree-level entry requirements.
- > **If English is not your first language**, you must also demonstrate English language skills equivalent to an IELTS overall band score (academic) 6.0, with no less than 6.0 in writing and speaking, and no less than 5.5 in reading and listening.
- > **If you do not hold the above qualifications**, you must demonstrate equivalent qualifications/experience. Mature applicants are encouraged to apply.
- > As part of the selection procedure, you must submit a portfolio of menu plans and photographs of your dishes.

Note: An application pack will be sent to you.

Further study options

This degree will provide a springboard into further advanced study in the culinary arts.

*This programme offers the Diploma in Culinary Arts (Level 5) as an exit qualification at the end of year one.

Food and Beverage Service

The hospitality industry can offer you excellent career opportunities if you enjoy working with others and providing competent, friendly service to people from around the world.

What skills do I need?

- > Good communication skills
- > Motivation
- > A good work ethic
- > Maturity and honesty
- > The ability to work well under pressure
- > Confidence when dealing with customers.

What opportunities are there in the industry?

Restaurants, bars and cafés > Hotel/motel industries > Catering firms > Cruise ships > Self-employment.

Motivated graduates with the right skills can easily progress to management positions, and we offer programmes to prepare you for roles with greater responsibility.

How much can I earn?

Wages vary depending on experience and responsibility, but salaries begin at approximately \$14 per hour and can increase according to experience and location. Tipping is also common in many countries and can have a significant impact on your income!

Certificate in Café and Bar (Level 3)

Location	Dunedin (full-time) Central Otago (part-time)
Duration	One semester
Delivery	On campus with work experience in our hospitality training facilities
Level	3
Credits	60
Start	Dunedin: February and July, 2014 Central Otago: July, 2014
Fee	Domestic: \$3,734 (Dunedin); \$3,221 (Central Otago) International: \$10,660
Apply	Dunedin: Preferred by 31 October, 2013 Central Otago: Preferred by 31 May, 2014

Cultivate the skills and knowledge required of professionals in the bar and café service areas of the hospitality industry including counter service, food preparation and barista knowledge.

Note: Graduates gain the equivalent of 60 credits towards the Certificate in Professional Restaurant, Bar and Wine (Level 4) and the National Diploma in Hospitality (Management) (Level 5).

Entry requirements

- > There are no academic entry requirements, but you must submit a letter of application and undertake an interview if requested.
- > **If English is not your first language**, you must also demonstrate English language skills equivalent to an IELTS overall band score (academic) of 5.5, with no less than 6.0 in writing and speaking, and no less than 5.5 in reading and listening, and meet your country-specific equivalent entry requirements listed on pages 82–85.

Further study options

Enhance your career prospects with our Certificate in Professional Restaurant, Bar and Wine (Level 4) or National Diploma in Hospitality (Management) (Level 5).

Certificate in Professional Restaurant, Bar and Wine (Level 4)

Location	Dunedin
Duration	One year full-time
Delivery	On campus with a local work placement
Level	4
Credits	120
Start	February, 2014
Fee	Domestic: \$6,680 International: \$19,240
Apply	Preferred by 31 October, 2013

Develop a range of general hospitality skills during this hands-on programme, as well as industry-related knowledge in areas such as café, restaurant and bar service, cookery, law and communication. Gain practical experience by working in our training restaurant and forge important relationships in the local industry during a two-week work placement.

Entry requirements

- > There are no academic entry requirements, but you must submit a letter of application and undertake an interview if requested.
- > We also prefer that you have previous experience in tourism or hospitality.
- > You must be at least 18 years old by the start of the second year to comply with Sale of Liquor Act 1989 requirements.
- > **If English is not your first language**, you must also demonstrate English language skills equivalent to an IELTS overall band score (academic) of 6.0, with no less than 6.0 in writing and speaking, and no less than 5.5 in reading and listening, and meet your country-specific equivalent entry requirements listed on pages 82–85.

Further study options

Enhance your career prospects by studying our National Diploma in Hospitality (Management) (Level 5).

Hospitality Management

Hospitality is the largest industry in the world with high demand for skilled and qualified people.

What skills do I need?

- > Good leadership skills
- > Excellent communication and people skills
- > Planning and organisational skills
- > Administrative and financial skills
- > Ability to work well under pressure
- > Maturity and honesty.

What opportunities are there in the industry?

Hotel and motel management > Restaurant and café management > Catering management > Self-employment.

How much can I earn?

Salaries begin at approximately \$40,000 per year and vary with experience, qualifications and location.

National Diploma in Hospitality (Management) (Level 5)

Location	Dunedin
Duration	Two years full-time
Delivery	On campus with practical sessions in our training restaurant
Level	5
Credits	244
Start	February, 2014
Fee	Domestic: \$6,666 (first year) International: \$19,710 (first year)
Apply	Preferred by 31 October, 2013

Prepare for a supervisory role in one of the world's most fast-paced industries. Develop your practical and management skills in the areas of food and beverage service, accommodation services and food production, and study a range of subjects including café, restaurant and bar service, cookery, hospitality management, business communication and marketing principles.

Entry requirements

- > There are no academic requirements, however we prefer that you have had four years of secondary school education **OR** successful completion of a Level 3 Certificate. Mature students should have equivalent life experience.
- > As part of the selection procedure you must submit a letter of application and undertake an interview if requested.
- > You must be at least 18 years old by the start of the second year to comply with Sale of Liquor Act 1989 requirements.
- > **International students** will be individually assessed to ensure they meet the entry requirements.
- > **If English is not your first language**, you must also demonstrate English language skills equivalent to an IELTS overall band score (academic) of 6.0, with no less than 6.0 in writing and speaking, and no less than 5.5 in reading and listening.

Further study options

Advance your management skills with our Bachelor of Applied Management (see page 44) – you will be awarded credits for papers or units already studied. Hone your cookery skills with our Bachelor of Culinary Arts.



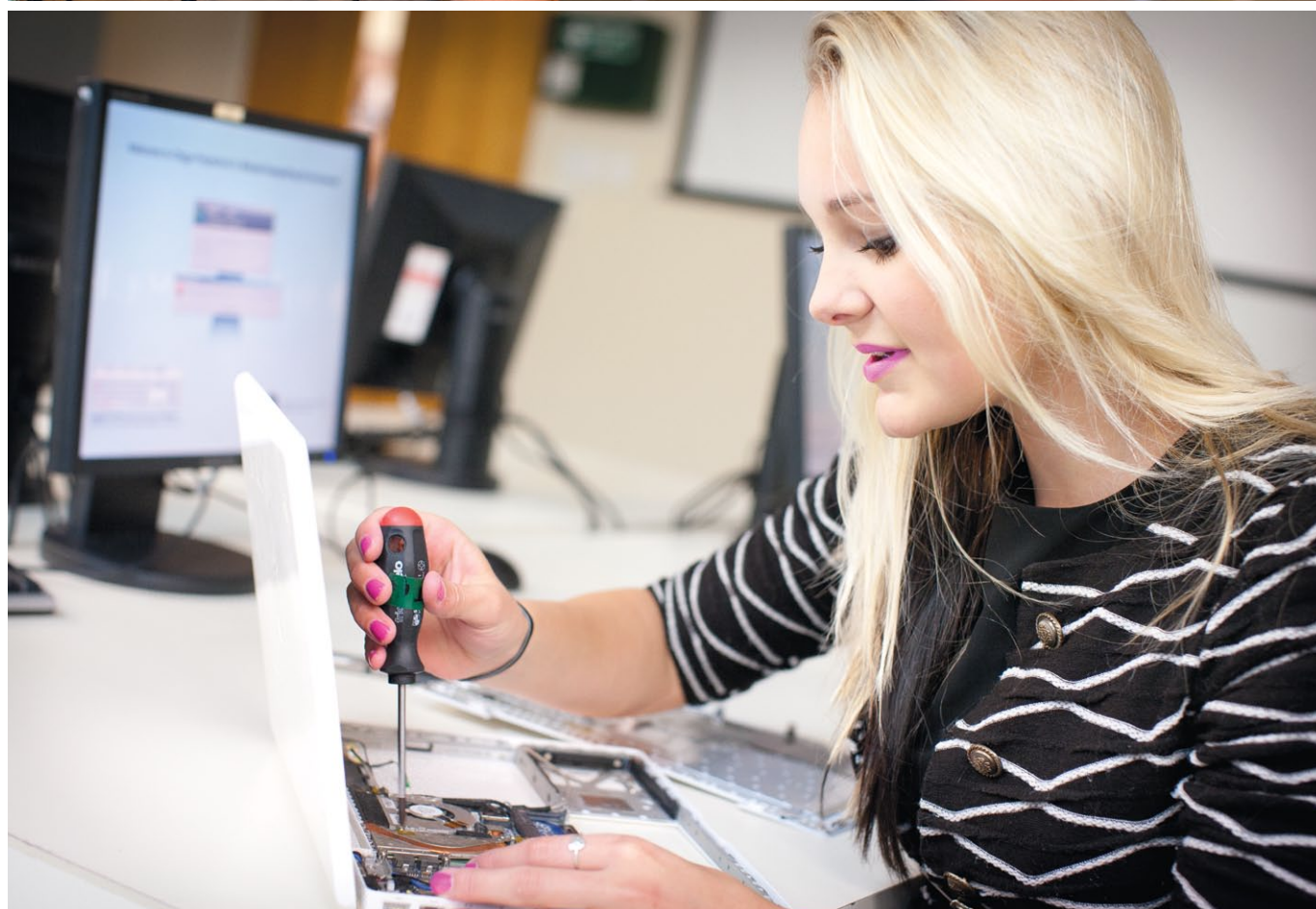
Business, Tourism and IT Careers

Business
including Professional Practice
Tourism
Computing and
Information Technology

Every industry in the world needs smart, innovative people with top-notch skills in administration, finance, strategic planning and communication – and they need great systems to make it work. The world is your oyster.

Not quite ready to launch into a career in Business, Tourism or IT? See pages 8–9 for Foundation Studies options.





Business

The fast-paced world of business is suited to people who can get out there and make things happen.

The opportunities for Business graduates are extremely varied – you could work in a wide range of organisations, environments and industries and potentially provide specialist management and/or technical advice, expertise and support.

Tasks may include

- > Overseeing the recruitment and retention of staff
- > Devising methods to improve productivity and efficiency
- > Managing inventory
- > Creating new products and developing marketing strategies
- > Managing office resources and equipment
- > Organising meetings and special events.

Those with expertise in the fields of management and/or administration can help businesses to grow and prosper, and there are always opportunities for smart people to plan and develop new business ventures.

What skills do I need?

- > Good people and communication skills
- > Negotiation skills
- > Excellent problem-solving and critical-thinking skills
- > The ability to plan, organise and prioritise
- > A good work ethic and self-motivation.

What industry opportunities are there?

Executive Officer > Team Leader/Supervisor/Manager > Human Resources Coordinator or Advisor > Marketing and Sales Representative > Accounting Technician > Business Analyst > Office Manager > Executive Assistant > Administrative Assistant > Self-employment.

Business skills can be applied in any context in New Zealand, and are transferable around the world. Graduates may eventually be promoted to senior management level or operate their own business.

How much can I earn?

Salaries vary depending on experience and the amount of responsibility involved in the position.

National Certificate in Business Administration and Computing (Level 3) and/or National Certificate in Business Administration (Level 4)

Location	Dunedin, Central Otago or online
Duration	One semester full-time (per level); part-time options
Delivery	On campus or online; both options include a work placement
Levels	3 and 4
Credits	Level 3: 60, Level 4: 60
Start	February (Level 3) and July (Level 4), 2014
Fee	Domestic: \$3,500 (per level) International: \$8,540 (per level)
Apply	Preferred by 30 November, 2013

In the first semester (Level 3), you will cover various administration skills including communication, computing, office skills, financial skills and text/word processing. In the second semester (Level 4), you will focus on an area of business administration such as MYOB, Advanced Text Processing, Medical Administration, Office Management and Payroll.

Entry requirements

- > Some computer knowledge would be an advantage.
- > To enter at Level 4, ideally we would expect you to have completed the National Certificate in Business Administration and Computing (Level 3) OR to have relevant work experience.
- > **International students** will be individually assessed to ensure they have an acceptable level of secondary school achievement.
- > **If English is not your first language**, you must also demonstrate English language skills equivalent to an IELTS overall band score (academic) of 5.5, with no less than 6.0 in writing, and no less than 5.0 in all other bands.

Further study options

Take your business skills to the next level with our Diploma in Marketing, Diploma in Accounting, Diploma in Business, New Zealand Diploma in Business or Bachelor of Applied Management.

Entry requirements for our Applied Business Diploma programmes

The following entry requirements apply to our Diploma in Accounting (Level 5), Diploma in Business (Level 5), Diploma in Marketing (Level 5), Diploma in Human Resource Management (Level 6) and New Zealand Diploma in Business. If any of these programmes also have specific requirements, they will be listed within the individual programme entry.

- > **If you are under 20**, you must have
 - > 50 NCEA credits at Level 2 or higher with at least 12 credits in each of three subjects including a minimum of 8 literacy credits at Level 2 or higher in English or te reo Māori; of which 4 credits must be in reading and writing
 - > 14 NCEA credits at Level 1 or higher in mathematics/pāngarau
 - > 4 NCEA credits at Level 2 or higher in reading and 4 in writing OR equivalent.
- > **If you are over 20**, you must have equivalent life/work experience or New Zealand University Entrance.
- > **International students** will be individually assessed to ensure they meet diploma-level entry requirements.
- > **If English is not your first language**, you must also demonstrate English language skills equivalent to an IELTS overall band score (academic) of 6.0, with no less than 6.0 in writing and speaking, and no less than 5.5 in reading and listening.

Diploma in Accounting (Level 5)

Location	Dunedin
Duration	One year full-time; part-time options
Delivery	On campus
Level	5
Credits	120
Start	February, 2014
Fee	Domestic: \$4,570 International: \$16,900
Apply	Preferred by 30 November, 2013

People with accountancy skills and qualifications are in constant demand for their ability to plan and record the financial performance of every kind of commercial venture. Develop a sound knowledge of accounting theory and application and become able to undertake preliminary accounting roles and functions.

Note: Credits gained in this qualification are able to be cross-credited to the NZ Diploma in Business or the Bachelor of Applied Management.

Further study options

Broaden your career prospects with our New Zealand Diploma in Business or Bachelor of Applied Management.

Diploma in Business (Level 5)

Location	Dunedin
Duration	One year full-time; part-time options
Delivery	On campus
Level	5
Credits	120
Start	February, 2014
Fee	Domestic: \$6,166 International: \$16,900
Apply	Preferred by 30 November, 2013

Focus on the operational skills you need to work effectively and successfully in business while developing a sound knowledge of general business theory and its application.

Note: Credits gained in this qualification are able to be cross-credited to the NZ Diploma in Business or the Bachelor of Applied Management.

Further study options

Continue your learning with our New Zealand Diploma in Business or Bachelor of Applied Management.

Diploma in Marketing (Level 5)

Location	Dunedin
Duration	One year full-time; part-time options
Delivery	On campus
Level	5
Credits	120
Start	February, 2014
Fee	Domestic: \$4,570 International: \$16,900
Apply	Preferred by 30 November, 2013

Discover the fundamentals of effective marketing and play a role in ensuring the success and longevity of any business. Become a valued employee for entry-level marketing positions or prepare for higher levels of learning.

Note: Credits gained in this qualification are able to be cross-credited to the NZ Diploma in Business or the Bachelor of Applied Management.

Further study options

Acquire advanced business skills and expand your employment potential with the New Zealand Diploma in Business or the Bachelor of Applied Management.

Diploma in Human Resource Management (Level 6)

Location	Dunedin
Duration	One year full-time; part-time options
Delivery	On campus with workplace experience
Level	6
Credits	120
Start	February, 2014
Fee	Domestic: \$4,570 International: \$16,900
Apply	Preferred by 30 November, 2013

Ideal if you are looking to add a specialty to an existing qualification, or as effective professional development if you already have experience in the industry. Study Organisations and Management, Human Resource Management, Leadership, Employment Relations, Applied Management and Organisational Behaviour. With a mix of theoretical and practical learning, embrace the chance to test your abilities in a real-world business environment.

Specific entry requirements

- > You must have at least two years of full-time (or equivalent) work experience in any field.
- > **If you are under 20**, you must also have
 - > 8 NCEA literacy credits at Level 2 or higher in English or te reo Māori (4 credits in reading and 4 in writing) **OR** equivalent.
- > **If English is not your first language**, you must also demonstrate English language skills equivalent to an IELTS overall band score (academic) of 6.0, with no band score less than 5.5.

Further study options

Develop advanced business skills and broaden your career prospects with our New Zealand Diploma in Business or Bachelor of Applied Management.

New Zealand Diploma in Business

Location	Dunedin
Duration	Two years full-time; part-time options
Delivery	On campus
Level	6
Credits	240
Start	February and July, 2014
Fee	Domestic: \$667 (per paper) International: \$16,900 (first year)
Apply	Preferred by 30 November, 2013 and 30 June, 2014

Aspiring to an entry-level management role? Learn core business skills in accounting, business communication, business law, management, computing and marketing. You then have the option to tailor your management expertise to a career of interest, such as human resource management, accounting, marketing or general management.

Note: Achievement of specified papers can lead to qualifications endorsed by the New Zealand Institute of Chartered Accountants or the New Zealand Institute of Management. Credits gained in this qualification are generally able to be cross-credited to the Bachelor of Applied Management.

Specific entry requirements

- > **If you are under 20**, you must have
 - > 8 NCEA literacy credits at Level 2 or higher in English or te reo Māori (4 credits in reading and 4 in writing) **OR** equivalent.

Further study options

Increase your career prospects by applying for our Bachelor of Applied Management. This qualification offers a range of specialist majors such as tourism management, event management and human resource management.

Bachelor of Applied Management (Major)*

Location	Dunedin or Auckland The Auckland-based programme is for international students ONLY.
Duration	Three years full-time; part-time options Fast-track option available in Auckland
Delivery	On campus with an internship that can be completed in New Zealand or anywhere in the world
Level	7
Credits	360
Start	Dunedin: February and July, 2014 Auckland: Five start dates throughout the year
Fee	Domestic: \$4,964 (first year) International: \$16,900 (first year) International fast-track option: \$50,700 (full programme) or two payments of \$25,350
Apply	Dunedin: Preferred by 30 November, 2013 and 31 May, 2014 Auckland: Please contact the Auckland International Campus for more information

Gain a degree based in the real world of business. This programme has industry experiences at its centre, incorporating case studies, workplace assignments and a major internship and industry research project. You will develop the understanding, skills and capabilities to work in a range of management environments at operational and strategic levels.

Note: In Dunedin, you may specialise in up to two majors from the second year or develop your own coherent path of study. You can choose to complete your degree over three years, or fast-track in Auckland, and complete it in two years and three months.

Entry requirements

- > **If you are under 20**, you must have
 - > 42 NCEA credits at Level 3 across four subjects **OR** 72 NCEA credits at Level 2 across four subjects
 - > 8 NCEA credits at English Level 2 or higher in reading and 4 in writing
 - > 14 NCEA credits at Level 1 or higher in mathematics/pāngarau **OR** equivalent.
- > **If you are over 20**, you must supply evidence of industry experience and/or alternative qualifications such as the New Zealand Diploma in Business.
- > **International students** will be individually assessed to ensure they meet degree-level entry requirements.
- > If you are a school-leaver or adult applicant who does not meet all of the entry criteria, you may still be given provisional entry to year one at the discretion of the Head of School.
- > **If English is not your first language**, you must also demonstrate English language skills equivalent to an IELTS overall band score (academic) of 6.0, with no less than 6.0 for writing.
- > Successful completion of our Certificate in Foundation Studies (ESOL) (Level 4) programme is an acceptable equivalent.
- > Students who have achieved a high level of English in academic results may apply for an English language proficiency (or IELTS) exemption.

Further study options

Acquire advanced business management skills and knowledge through postgraduate study in Management here and overseas.

Graduate Diploma in Applied Management

Location	Dunedin or Auckland The Auckland-based programme is for international students ONLY
Duration	One year full-time; part-time options
Delivery	On campus with an internship; the Sustainable Practice major is studied online with block courses in Wanaka/Queenstown or Auckland/Raglan (see page 10)
Level	7
Credits	120
Start	Dunedin: February and July**, 2014 Auckland: Jan, March, June, Aug and Oct 2014
Fee	Domestic: \$5,040 International: \$16,900
Apply	Dunedin: Preferred by 30 November, 2013 and 30 June, 2014 Auckland: Please contact the Auckland International Campus for more information

Complete an intensive programme of study in a specific area of business management. Graduates will have a sound understanding of the dynamic environment in which managers operate, enabling them to apply that knowledge at organisational and strategic levels in a range of industries and organisations. Undertake a significant industry-based research project, coupled with a 200-hour internship enabling you to gain vital practical experience.

Note: You may specialise in a specific major or study a generic management pathway.

Entry requirements

- > A bachelor's degree in any discipline **OR** equivalent skills/experience.
- > **International students** will be individually assessed to ensure they meet the entry requirements.
- > You may **NOT** enrol in an area of specialty that you studied at undergraduate level.
- > **If English is not your first language**, you must also demonstrate English language skills equivalent to an IELTS overall band score (academic) of 6.0, with no band score less than 6.0.

Further study options

Progress into higher levels of learning and enhance your employment potential with postgraduate study in Management.

Applied Management majors

The following majors are available within the Bachelor of Applied Management and Graduate Diploma in Applied Management:

- > Strategic Management
- > Sustainable Practice (Graduate Diploma-level only, see page 10)
- > Human Resource Management
- > Sport Management
- > Tourism Management
- > Sales and Marketing
- > Event Management
- > Business Transformation and Change
- > Hotel Management (Graduate Diploma-level, Auckland International Campus only).

Note: Some of the listed majors may not be offered in 2014 and/or additional new majors may be on offer.

Please contact the School of Applied Business for a confirmed list.

Graduate Diploma in Professional Practice and Master of Professional Practice

A unique opportunity to use the challenges from your professional life as content for high-level qualifications (see page 12).

*Majors are not offered at our Auckland International Campus for this qualification

**If you wish to start in July, you will not have the opportunity to specialise during this programme

Tourism

Nearly one in ten New Zealanders work either directly or indirectly in tourism – and you could join them! There are many opportunities for skilled graduates both within New Zealand and internationally.

Your first step should be to undertake a broad-based programme to provide you with the practical skills and understanding to decide which area of tourism you would most like to work in. Then you can move into more specialised study areas such as conferences and events or sustainable practice.

What skills do I need?

- > Good customer service skills
- > Good communication skills
- > Sales ability and product knowledge
- > Flexibility.

What industry opportunities are there?

Information centre > Tour guides > Travel agencies and wholesalers > Tourism operators and enterprises > Airports and customs > Hospitality and hotel industry > Event and conference management > Self-employment.

How much can I earn?

Salaries vary, but tourism graduates usually earn between \$25,000 and \$50,000 per year. Many tourism professionals work on a base salary with commission bonuses for meeting sales targets. There are opportunities to rise quickly through the ranks for graduates who are prepared to work hard and go where the jobs are.

Certificate in Applied Travel and Tourism (Level 3)

Location	Dunedin
Duration	One year full-time
Delivery	On campus; module-by-module study options available
Level	3
Credits	120
Start	February, 2014
Fee	Domestic: \$6,025 (first year) International: \$16,900 (first year)
Apply	Preferred by 30 November, 2013

Undertake a broad-based series of short courses, focus on a “day in the life” of various tourist professionals and participate in a field trip to gain hands-on, operational experience for a career in front-line tourism. Then choose two specialties from tour guiding, travel agency operations or hospitality operations and develop your knowledge of these areas.

Note: You will complete the National Certificate in Tourism (Core Skills) (Level 3) as part of this programme.

Entry requirements

- > We prefer that you have NCEA credits at Level 2 or higher in literacy and numeracy **OR** equivalent.
- > **International students** will be individually assessed to ensure they have an acceptable level of secondary school achievement.
- > **If English is not your first language**, you must also demonstrate English language skills equivalent to an IELTS overall band score (academic) of 6.0, with no band score less than 5.5.

Further study options

Expand your employment potential and further develop your skills with our Diploma in Applied Travel and Tourism (Level 5).

Diploma in Applied Travel and Tourism (Level 5)

Location	Dunedin
Duration	One year full-time
Delivery	On campus; module-by-module study options available
Level	5
Credits	120
Start	February, 2014
Fee	Domestic: \$5,857 International: \$16,900
Apply	Preferred by 30 November, 2013

Build on your existing practical skills and gain a greater understanding of New Zealand's place in the global arena of tourism. Gain a working knowledge of tourism from a business perspective through specialties such as conference and events and sustainable tourism. Experience a taste of the real-life challenges and excitement of working in this industry during this hands-on programme that provides the opportunity to complete a research project in a tourism organisation of your choice.

Entry requirements

- > Certificate in Applied Travel and Tourism (Level 3) **OR** equivalent qualifications/experience.
- > Minimum 4 NCEA credits at Level 2 in reading and writing and 8 credits at Level 1 in mathematics/pāngarau **OR** equivalent.
- > **International students** will be individually assessed to ensure they meet diploma-level entry requirements.
- > **If English is not your first language**, you must also demonstrate English language skills equivalent to an IELTS overall band score (academic) of 6.0, with no band score less than 5.5.

Further study options

Increase your employment prospects with the Bachelor of Applied Management (Tourism Management) or, alternatively, pursue a career in the hospitality industry and apply for our Bachelor of Culinary Arts qualification.

Computing and Information Technology

The information technology industry may be changing all the time, but one thing is certain – it is definitely here to stay.

The industry includes those who work for companies that produce and service IT products and others who work in IT-related occupations within various different industries. Roles may include assembling, installing and testing computer software, networks and equipment; updating or repairing existing equipment, and planning and writing programs.

What skills do I need?

- > Good communication skills
- > Technical skills
- > Planning, organisational and problem-solving skills.

What industry opportunities are there?

Computer Systems Technician > Computing Services Manager > Database Administrator > Programmer > Software Developer > Systems Administrator > Business Analyst.

There are currently far more IT jobs than there are graduates. Employers are desperate for staff with a good understanding of the IT industry and a willingness to continue developing new skills throughout their career.

How much can I earn?

Salaries vary, but graduates usually earn between \$35,000 and \$75,000 per year, depending on their experience and specialist area. The industry median salary is \$85,000 per year.

Certificate in Information Technology (Level 3)

Location	Dunedin or Central Otago
Duration	One semester full-time; one year part-time
Delivery	On campus
Level	3
Credits	60
Start	February and July, 2014
Fee	Domestic: \$3,372 International: \$9,880
Apply	By 30 November, 2013 and 30 April, 2014

Be introduced to a variety of topics within the computer field and enjoy a good mix of theory work and practical application. This programme is designed to provide you with the knowledge and skills required to enter the Certificate in Information Technology (Level 4) or other equivalent qualifications.

Entry requirements

- > There are no entry requirements. However, to ensure your ability to succeed at Level 3, selection will be based on your academic and/or work experience.
- > **If English is not your first language**, you must demonstrate English language skills equivalent to an IELTS overall band score (academic) of 5.5, and meet your country-specific equivalent entry requirements listed on pages 82–85.

Further study options

Develop your skills with our Certificate in Information Technology (Level 4), Certificate in IT Service and Support or Bachelor of Information Technology.

Certificate in Information Technology (Level 4)

Location	Dunedin
Duration	One semester full-time; one year part-time
Delivery	On campus
Level	4
Credits	60
Start	February and July, 2014
Fee	Domestic: \$3,511 International: \$9,880
Apply	By 30 November, 2013 and 30 April, 2014

If you have limited experience in computing but would like to explore your career options in this exciting field, then this is the programme for you. This in-depth introduction to aspects of computing and software is specifically designed to provide the foundation you need to enter the Bachelor of Information Technology or other IT programmes.

Entry requirements

- > There are no entry requirements. However, to ensure your ability to succeed at Level 4, selection will be based on your academic and/or work experience.
- > **If English is not your first language**, you must demonstrate English language skills equivalent to an IELTS overall band score (academic) of 6.0, with no less than 6.0 in writing, and no less than 5.5 in all other bands, and meet your country-specific equivalent entry requirements listed on pages 82–85.

Further study options

Expand your knowledge and employment potential with the Bachelor of Information Technology.

Bridging options

Both the **Certificate in Information Technology (Level 3)** and **Certificate in Information Technology (Level 4)** shown on this page are bridging options for the Bachelor of Information Technology, shown opposite, as is the **Certificate in Creative Studies (Level 4)** on page 26.

Certificate in IT Service and Support

Location	Dunedin
Duration	One year full-time
Delivery	On campus
Level	4
Credits	120
Start	February, 2014
Fee	Domestic: \$6,250 International: \$19,710
Apply	By 14 December, 2013

Prepare for employment as a computer technician. Learn about PC hardware, configuring and troubleshooting Microsoft Windows PCs, networks and server administration. Explore Cisco CCNA, Linux and Security, and prepare for a number of external qualifications including CompTIA A+ and Microsoft Certified Technical Specialist (MCTS).

Note: If you wish to study part-time, contact the School of Information Technology to learn more about the Certificate in Computer Maintenance and Certificate in Network Administration (Level 6).

Entry requirements

- > There are no entry requirements. However, to ensure your ability to succeed at Level 4, selection will be based on your academic and/or work experience.
- > **If English is not your first language**, you must demonstrate English language skills equivalent to an IELTS overall band score (academic) of 5.5, with no less than 6.0 in writing, and no less than 5.0 in all other bands, and meet your country-specific equivalent entry requirements listed on pages 82–85.

Further study options

Hone your skills with our Bachelor of Information Technology qualification - graduates of the Certificate in IT Service and Support can receive credits towards this degree.

Bachelor of Information Technology

Location	Dunedin
Duration	Three years full-time; part-time options
Delivery	On campus with an industry-based project for an external client during year three
Level	7
Credits	360
Start	February and July, 2014
Fee	Domestic: \$6,507 (first year) International: \$20,280 (first year)
Apply	By 14 December, 2013 and 30 May, 2014

Discover the power of computing technology and how it can help you develop real-world solutions and innovations. This hands-on degree allows you to develop high-level technical abilities and a solid theoretical understanding of IT concepts while exercising your problem-solving skills and creativity.

Note: You are enrolled in the Certificate of Information Technology (Level 5) during the first semester of study.

Entry requirements

- > 42 NCEA credits at Level 3 or higher including 14 credits in each of two relevant subjects (such as computing, mathematics, English, physics, electronics or design).
- > 8 NCEA credits at Level 2 or higher in English and/or te reo Māori.
- > 14 NCEA credits at Level 1 or higher in mathematics/pāngarau.
- > **International students** will be individually assessed to ensure they meet degree-level entry requirements and must have achieved the equivalent of Year 11 mathematics.
- > **If you do not hold the above qualifications**, you must demonstrate equivalent work/life experience.
- > You must submit an essay outlining your interest and involvement in information technology.
- > **If English is not your first language**, you must also demonstrate English language skills equivalent to an IELTS overall band score (academic) of 6.0, with no band score less than 6.0.

Further study options

Advance your skills and build upon your practical experience with postgraduate study in Information Technology.



Graduate Certificate in Information Technology (Level 7) and Graduate Diploma in Information Technology

Location	Dunedin
Duration	Graduate Certificate: One semester full-time; two-three semesters part-time, Graduate Diploma: One year full-time; two-three years part-time
Delivery	On campus or discuss your options for studying online with the Programme Manager
Level	7
Credits	Graduate Certificate: 60; Graduate Diploma: 120
Start	February and July, 2014
Fee	Domestic: \$3,632 (Graduate Certificate); \$6,457 (Graduate Diploma) International: \$10,140 (Graduate Certificate); \$20,280 (Graduate Diploma)
Apply	By 14 December, 2013 and 30 May, 2014

Ideal if you are a degree-level graduate in another discipline looking to develop your computer skills. These programmes will also suit IT graduates who want to increase their knowledge in a specialist area such as interactive media, hardware, programming, databases, communications, business or networks/operating systems. Successful completion of the Graduate Certificate will enable you to enter the second semester of the Graduate Diploma.

Entry requirements

- > An undergraduate qualification in computing or a related discipline **OR** a degree-equivalent qualification supported by practical, professional or scholarly experience.
- > **International students** must hold a recognised bachelor's degree in computing or a related discipline **OR** an equivalent qualification supported by practical, professional or scholarly experience.
- > **If English is not your first language**, you must also demonstrate English language skills equivalent to an IELTS overall band score (academic) of 6.0, with no band score less than 6.0.

Further study options

Increase your career prospects with master's-level study options here or abroad.

Trades and Technical Careers

Construction

also including Architectural Draughting, Quantity Surveying, Stonemasonry

Engineering

Automotive, Mechanical, Civil, Electrical

If you're a hands-on kind of person who really likes to make things tick, then you'll find the career to suit you in trades and technical fields such as engineering, construction and architectural draughting. Help shape the world!

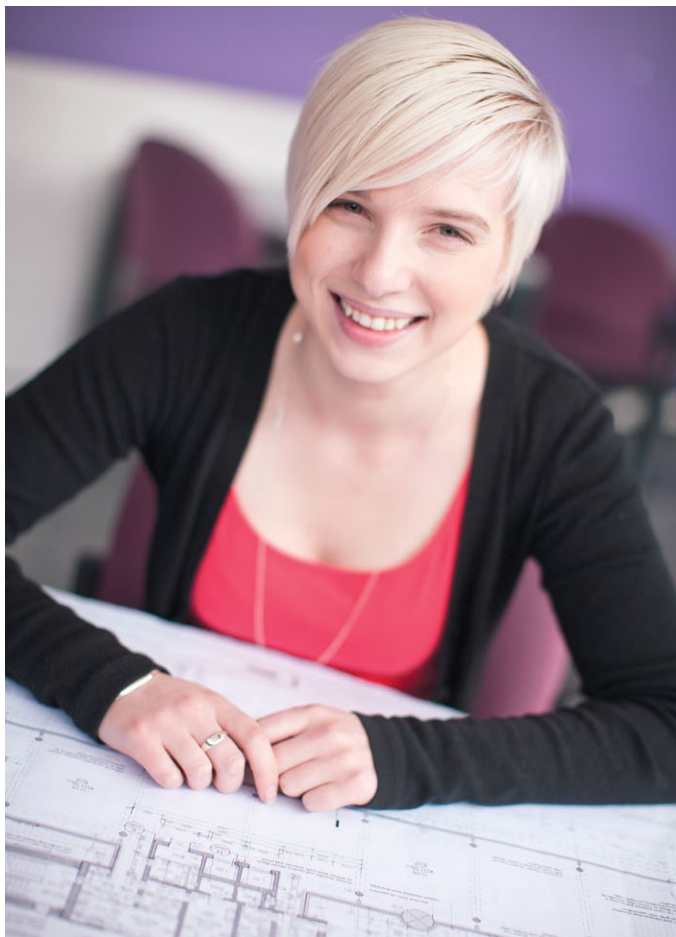
Not quite ready to launch into a Trades or Technical career? See pages 8 or 50 for Foundation Studies options.

Central Lakes Trades Academy

Are you at secondary school in Queenstown Lakes or Central Otago and keen to get stuck into trades or technical training? If so, our Central Lakes Trades Academy could be just the ticket.

We offer a range of programmes free of charge. Your school must agree that this course of study is the right choice for you, so please talk to your school careers advisor for more information.





“It was so useful to learn more about the technical side of engineering; why you do what you do in the field. It was a really worthwhile experience – I needed to do it to be able to get further in my career.”

Kimberley Buckley
New Zealand Diploma in Engineering (Civil)



Certificate in Foundation Studies (Level 3)* Akoraka Mahi Tini

Location	Dunedin
Duration	17 weeks full-time
Delivery	On campus with industry placements
Level	3
Credits	60
Start	March, 2014
Fee	Domestic: \$2,224 This programme is NOT available for international students
Apply	Enrolments will be accepted up until the start date

Prepare for studies in the trades and technical fields with this kaupapa Māori-based programme. Gain real-world experience by undertaking trades-based projects and industry placements. Develop your literacy, numeracy and computer skills, and learn about tikaka and kawa in relation to trades.

Entry requirements

- > You must attend an interview.

Further study options

Continue your learning and develop your skills with our Certificate in Carpentry (Level 4), Certificate in Stonemasonry (Level 4) or Certificate in Electrical Technology (Level 4). For further options, please contact the School of Architecture, Building and Engineering.

Certificate in Foundation Studies (Level 3)* Painting and Decorating

Location	Dunedin
Duration	12 weeks full-time
Delivery	On campus
Level	3
Credits	60
Start	TBA
Fee	Domestic: \$2,224** This programme is NOT available for international students
Apply	Enrolments will be accepted up until the start date

Painting and decorating is a versatile trade offering year round employment. This pre-trade programme gives you the fundamental skills you need to gain employment in the painting and decorating industry and is the perfect place to start if you wish to move into an apprenticeship position.

Entry requirements

- > Open entry.

Further study options

Upon successful completion of this programme, you can apply for a trainee painter position or an apprenticeship. As an apprentice, you will complete further unit standards while you work for established painting and decorating companies, temp on different projects as a hired hand or work in home decorating and retail hardware.

Certificate in Foundation Studies (Level 3)* Masonry Trades

Location	Dunedin
Duration	12 weeks full-time
Delivery	On campus
Level	3
Credits	60
Start	TBA
Fee	Domestic: \$2,224** This programme is NOT available for international students
Apply	Enrolments will be accepted up until the start date

There is ongoing demand for skilled masons who can build strong, tidy and safe structures from bricks and blocks for industrial, residential and landscaping purposes. This pre-trade programme sets you up for working at entry level in these construction areas, as well as the chance to seek apprenticeship training.

Entry requirements

- > Open entry.

Further study options

During your masonry apprenticeship, you will complete theory and practical units over three years, gaining the National Certificate in Brick and Block Laying (Level 4) and the National Certificate in Refractory Work (Level 3). In addition, you will gain qualified Brick and Block Layer or Refractory status. You can apply for further study towards qualifications through an Industry Training Organisation (ITO) training agreement.

Certificate in Foundation Studies (Level 3)* Plasterboard Fixing and Stopping

Location	Dunedin
Duration	12 weeks full-time
Delivery	On campus
Level	3
Credits	60
Start	TBA
Fee	Domestic: \$2,224** This programme is NOT available for international students
Apply	Enrolments will be accepted up until the start date

The art of fixing and stopping is essential to the building trades and this programme trains you in the key skills needed to work as an assistant to a plasterboard fixer or finisher. With experience, you can progress to a leading hand in a team or become self-employed. Other building industry jobs such as painting and decorating, joinery or carpentry are also an option.

Entry requirements

- > Open entry.

Further study options

This programme prepares you for an apprenticeship position, where you will gain further on-the-job training. Unit standards included within this programme form part of the National Certificate in Plasterboard (Level 4), and you may apply for further study towards this qualification through the Building and Construction Industry Training Organisation (BCITO).

*Subject to final approval.

**\$500 fee scholarships are available to eligible applicants. Please contact the School of Architecture, Building and Engineering for more information.

Construction

These industries involve the planning, designing, building and repairing of residential and commercial buildings. They are extremely diverse and you may specialise in a number of fields, such as:

Construction

- > Carpentry – constructing and maintaining buildings
- > Stonemasonry – turning rough stone blocks into buildings and fences

Architecture & Building

- > Architectural draughting – producing drawings that are used on-site by building contractors
- > Construction management – ensuring buildings are constructed according to the contract documents, up to the necessary standard, on time and within budget
- > Quantity surveying – ensuring buildings are designed and completed within budget.

What skills do I need?

- > To be motivated and efficient
- > Creative problem-solving skills
- > Good communication and people skills
- > The ability to think laterally
- > To be fit, healthy and strong (for some construction-related jobs).

What opportunities are there in these industries?

Construction firms > Architectural firms > Building contractors and suppliers > Quantity surveying practices > Local authority and government agencies > Property development and management companies.

How much can I earn?

Starting wages range from \$13 to \$23 per hour. With experience, salaries vary between \$47,000 and \$90,000 per year.



Certificate in Carpentry (Level 4)

Location	Dunedin
Duration	One year full-time
Delivery	On campus with work experience
Level	4
Credits	136
Start	February and June, 2014
Fee	Domestic: \$6,169 This programme is NOT available for international students
Apply	Anytime

This pre-trade training qualification is ideal if you are keen to take up an apprenticeship and enter the building and construction industry. It has an even balance of theory and practice, including eight weeks of work experience.

Note: This programme includes the theory component of the National Certificate in Carpentry – the recognised standard for qualified carpenters.

Entry requirements

- > There are no academic entry requirements, but we prefer that you have at least four years of secondary education, with
 - > 12 NCEA Level 2 credits in English
 - > 12 NCEA Level 1 credits in mathematics and workshop technology
 - > Unit standards in Building, Construction and Allied Trade Skills (BCATS) **OR** equivalent qualifications/experience.

Further study options

Undertake an apprenticeship to complete the practical components of the National Certificate in Carpentry. You may then study more advanced construction programmes such as the National Certificate in Construction (Leading Hand) (Level 4) followed by the National Certificate in Construction (Supervisor) (Level 5).

Certificate in Stonemasonry (Level 4)

Location	Central Otago
Duration	One year full-time; part-time options
Delivery	On campus with work experience; some theory modules are delivered online
Level	4
Credits	122
Start	February, 2014
Fee	Domestic: \$6,572 International: \$19,240
Apply	Preferred by December, 2013

Stonemasons play a key role in creating and maintaining historic, character and architectural buildings and structures. This Certificate is the only full-time stonemasonry programme in New Zealand. You will learn how to veneer houses in stone and build stone features such as paths, walls, fireplaces and water features. Undertake extensive practical training and work experience to gain a high level of competence and the ability to work independently.

Note: Some additional work will be required to cover core stonemasonry and health and safety skills if joining after March.

Entry requirements

- > There are no academic entry requirements, but you must be physically fit to cope with lifting and the use of manual equipment.
- > **If English is not your first language**, you must also demonstrate English language skills equivalent to an IELTS overall band score (academic) of 5.5, with no less than 6.0 in writing, and no less than 5.0 in all other bands, and meet your country-specific equivalent entry requirements listed on pages 82–85.

National Certificate in Construction (Leading Hand) (Level 4)

Location	Dunedin
Duration	One year
Delivery	On campus; part-time evening classes
Level	4
Credits	65
Start	February, 2014
Fee	TBA This programme is NOT available for international students
Apply	Preferred by 30 November, 2013

Receive the training required of a competent leading hand in the construction industry and develop excellent technical skills and an understanding of building sequence, logistics, operations and building regulations/standards. Study the communication techniques, staff management, client interaction and administrative skills to be a productive and efficient leader on a building site.

Note: This programme will only run if there are sufficient numbers.

Entry requirements

- > We prefer that you have either a National Certificate in Carpentry (Level 4) or a Trade Certificate in Carpentry **AND** have completed an approved apprenticeship **OR** demonstrate equivalent skills/experience/qualifications.

Further study options

Develop your supervisory skills with our National Certificate in Construction (Supervisor) (Level 5).

National Certificate in Construction (Supervisor) (Level 5)

Location	Dunedin
Duration	One year
Delivery	On campus; part-time evening classes
Level	5
Credits	120
Start	February, 2014
Fee	TBA This programme is NOT available for international students
Apply	Preferred by 30 November, 2013

Start on the path to becoming a competent supervisor in the construction industry by developing advanced technical knowledge of the logistics and operation of a building project, subcontractor supervision and health and safety practices. Learn about set out, excavation support, weatherproofing, non-structural exterior finishes, precast concrete units and proprietary ceiling and wall systems.

Note: This programme will only run if there are sufficient numbers.

Entry requirements

- > National Certificate in Carpentry (Level 4) **OR** equivalent.
- > National Certificate in Construction (Leading Hand) (Level 4).

Further study options

Hone your skills with our National Diploma in Construction Management (Level 6).

National Diploma in Construction Management (Level 6)

Location	Dunedin
Duration	Two years full-time; part-time options*
Delivery	On campus
Level	6
Credits	246
Start	February, 2014
Fee	Domestic: \$6,463 (first year) International: \$19,710 (first year)
Apply	Preferred by 30 November, 2013

Ideal if you are already in the industry and keen to move into a management or supervisory role, this programme also suits those without construction experience. Develop a solid technical knowledge of construction, site management, measuring, estimation and communication skills, by working through problems taken from real-world scenarios.

Entry requirements

- > You must have four years of secondary school education, or equivalent.
We also recommend:
 - > You have 35 NCEA credits at Level 2 or higher in subjects such as mathematics, physics, English and chemistry **OR** a New Zealand Trade Certificate in Carpentry **OR** a National Certificate in Carpentry **OR** equivalent qualifications/experience
 - > You have an understanding of the industry (visiting a construction company or quantity surveying practice for example)
 - > You have a strong interest in construction management and the building industry
 - > Computing experience.
- > **International students** will be individually assessed to ensure they meet diploma-level entry requirements, and the equivalent of Year 12 mathematics, physics and chemistry would be an advantage.
- > **If English is not your first language**, you must also demonstrate English language skills equivalent to an IELTS overall band score (academic) of 6.0, with no less than 6.0 in writing and speaking, and no less than 5.5 in reading and listening.

As part of our selection procedure you will be required to undertake an interview.

Further study options

Build upon your existing skills with construction management degrees at Massey University or UNITEC Institute of Technology – completion of this Diploma can reduce the length of these degrees by up to a year.

*Part-time study options must be approved by the Programme Manager and participation in some unit standards may be restricted due to the number of full-time students enrolled.



Diploma in Architectural Draughting (Level 6)

Location	Dunedin
Duration	Three years full-time; part-time options*
Delivery	On campus
Level	6
Credits	378
Start	February, 2014
Fee	Domestic: \$6,849 (first year) International: \$19,710 (first year)
Apply	Preferred by 30 November, 2013

This internationally-recognised qualification focuses on the skills required of an architectural technician: providing assistance in the process of producing design, presentation and contract drawings, seeking client approval, obtaining building consents and enabling the construction process to progress with ease. You will complete the National Diploma in Architectural Technology (Level 6) as part of this programme.

Entry requirements

- > You must have four years of secondary school education, or equivalent.
We also recommend:
 - > You have 35 NCEA credits at Level 2 or higher in subjects such as mathematics, physics, English and chemistry **OR** a New Zealand Trade Certificate in Carpentry **OR** a National Certificate in Carpentry **OR** equivalent qualifications/experience
 - > You have an understanding of the industry (visiting an architectural practice, for example)
 - > You have a strong interest in architectural draughting and the building industry
 - > Computing experience.
- > **International students** will be individually assessed to ensure they meet diploma-level entry requirements, and the equivalent of Year 12 mathematics, physics and chemistry would be an advantage.
- > **If English is not your first language**, you must also demonstrate English language skills equivalent to an IELTS overall band score (academic) of 6.0, with no less than 6.0 in writing and speaking, and no less than 5.5 in reading and listening.

As part of our selection procedure you will be required to undertake an interview.

Further study options

Progress to higher levels of learning with architecture degree programmes at the University of Auckland, Victoria University or UNITEC Institute of Technology – completion of this Diploma can reduce the length of these degrees by up to a year and a half.



National Diploma in Quantity Surveying (Level 6)

Location	Dunedin
Duration	Two years full-time; part-time options*
Delivery	On campus
Level	6
Credits	236
Start	February, 2014
Fee	Domestic: \$6,780 (first year) International: \$19,710 (first year)
Apply	Preferred by 30 November, 2013

This internationally-recognised qualification will equip you with the knowledge required for a technician quantity surveyor in professional consultancies and construction companies. Upon graduating, you will be able to quantify, research, price and administer construction work and assist with preliminary cost planning and feasibility studies.

Entry requirements

- > You must have four years of secondary school education, or equivalent.
We also recommend:
 - > You have 35 NCEA credits at Level 2 or higher in subjects such as mathematics, physics, English and chemistry **OR** a New Zealand Trade Certificate in Carpentry **OR** a National Certificate in Carpentry **OR** equivalent qualifications/experience
 - > You have an understanding of the industry (visiting a construction company or quantity surveying practice, for example)
 - > You have a strong interest in quantity surveying and the building industry
 - > Computing experience.
- > **International students** will be individually assessed to ensure they meet diploma-level entry requirements, and the equivalent of Year 12 mathematics, physics and chemistry would be an advantage.
- > **If English is not your first language**, you must also demonstrate English language skills equivalent to an IELTS overall band score (academic) of 6.0, with no less than 6.0 in writing and speaking, and no less than 5.5 in reading and listening.

As part of our selection procedure you will be required to undertake an interview.

Further study options

Expand your employment potential with advanced quantity surveying degrees at Massey University or UNITEC – completion of this Diploma can reduce the length of these degrees by up to a year.

*Part-time study options must be approved by the Programme Manager and participation in some unit standards may be restricted due to the number of full-time students enrolled.

Automotive Engineering

People employed in the automotive industry repair, maintain, modify and sell vehicles and vehicle parts.

Some professionals within this industry specialise in working with one type of vehicle, product or service.

What skills do I need?

- > The ability to work with tools and equipment
- > People skills
- > Communication skills
- > Alertness, adaptability and responsibility
- > Good hand-eye coordination and hearing
- > Good memory and an eye for detail.

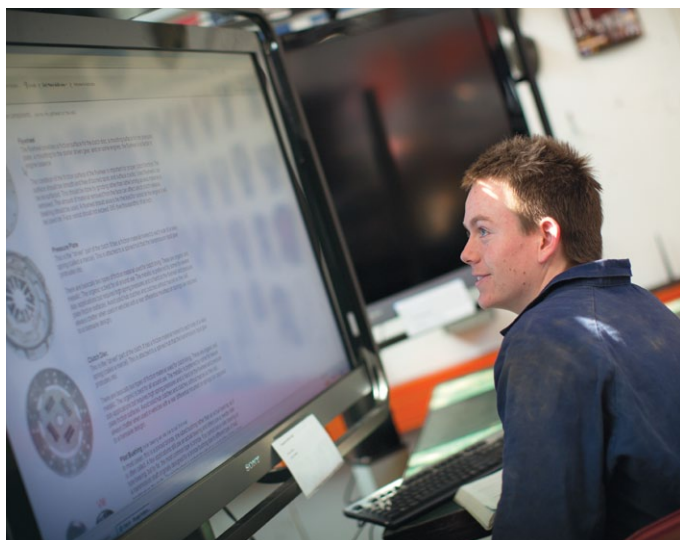
What opportunities are there in the industry?

Automotive Engineer/Technician, light equipment, heavy equipment or electrical > Motorcycle Technician > Small Engine Mechanic.

Employment opportunities in the automotive industry are very good as the number of vehicles on the road continues to increase. This creates a steady demand for automotive products and services.

How much can I earn?

Wages vary, but most automotive graduates earn between \$14 and \$25 per hour. This can increase as your career progresses.



Certificate in Automotive Engineering (Level 3)

Location	Dunedin
Duration	One year full-time
Delivery	On campus with practical training in our workshop and 100 hours of work experience
Level	3
Credits	120
Start	February, 2014
Fee	Domestic: \$7,345 International: \$18,630
Apply	Preferred by 30 November, 2013

Learn a range of servicing procedures, engineering and welding skills and the skills to diagnose faults and repair light vehicle hydraulic braking systems. Develop the fundamental knowledge and techniques required for working with ignition systems, automotive electrical circuits, electronic fuel injection systems and automotive wiring and lighting systems.

Note: A Certificate in Automotive and Mechanical Engineering (Level 2) is available to domestic students through the Youth Guarantee Scheme (see page 9).

Entry requirements

- > There are no academic entry requirements, but it is an advantage to hold the Level 1 National Certificate in Automotive Engineering (Foundation Skills).
- > **International students** will be individually assessed to ensure they have an acceptable level of secondary school achievement.
- > As part of the selection procedure, you will need to attend an information seminar with practical exercises and complete a one-day work experience trial with an MTA garage.
- > **If English is not your first language**, you must also demonstrate English language skills equivalent to an IELTS overall band score (academic) of 5.5, with no band score less than 5.0.

Further study options

Domestic students can expand their employment potential by completing an apprenticeship through the MITO Training programme. International students have the option of a variety of training institute courses.

Electrical Technology

Electricians install, maintain and repair electrical wiring and electrical or electronic equipment.

You may be required to study and interpret wiring diagrams, install and maintain electrical wiring and equipment, repair street lighting and power cables, service electrical machines and test electrical work for safety.

What skills do I need?

- > Enjoy a variety of work environments
- > Good problem-solving skills
- > Excellent listening and communication skills
- > Good hand-eye coordination
- > The ability to work well under pressure.

What opportunities are there in the industry?

Electrical and engineering firms > Building construction companies > Telecommunications > Self-employment.

There is high demand for qualified electricians and New Zealand-trained electricians are held in high regard internationally.

How much can I earn?

Electricians and electrical engineers usually earn between \$25,000 and \$50,000 per year. Many electricians are self-employed and their income levels can be much higher.

Certificate in Electrical Technology (Level 4)

Location	Dunedin
Duration	One year full-time
Delivery	On campus
Level	4
Credits	120
Start	February, 2014
Fee	Domestic: \$7,248 International: \$19,710
Apply	Preferred by 30 November, 2013

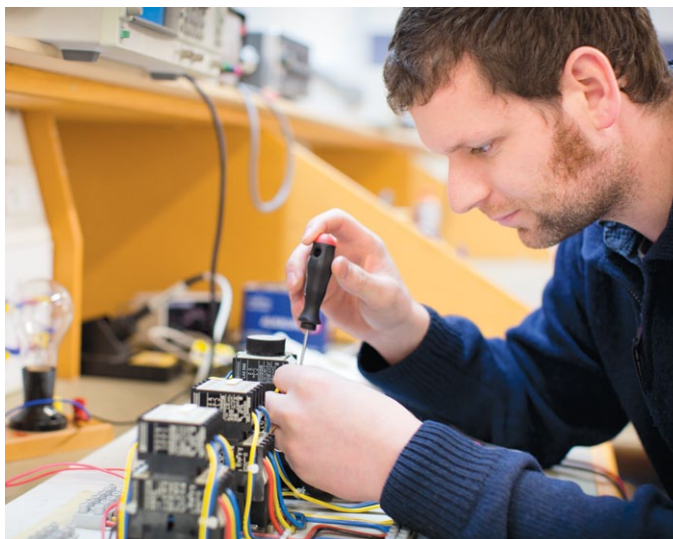
Prepare to be a trainee electrician with this hands-on programme, supported by the Engineering Industry Training Organisations. New Zealand-trained electricians are held in high regard internationally and, whilst you will still need to complete a recognised apprenticeship before applying for registration, the advanced knowledge and practical training you gain will greatly enhance your employment prospects.

Entry requirements

- > There are no academic entry requirements but we prefer that you have completed three years of secondary school education with good results in mathematics and science.
- > As part of the selection procedure you will be required to undertake an interview.
- > **International students** will be individually assessed to ensure they meet the entry requirements.
- > **If English is not your first language**, you must also demonstrate English language skills equivalent to an IELTS overall band score (academic) of 5.5, with no less than 6.0 in writing, and no less than 5.5 in all other bands.

Further study options

This Certificate is a stepping stone to diploma-level study in electrical engineering.



Engineering

Civil, Mechanical, Electrical

Civil engineering graduates are important participants in the design, construction and project management of civil works such as roads, dams, earthquake engineering, tunnelling, water and sewerage systems and mining operations.

They are responsible for the project management of these jobs, which may include efficiently managing manpower, machinery, materials, money and environment.

Civil engineering graduates can work internationally and New Zealand-trained engineering graduates have a good reputation worldwide. There is presently a significant shortage of trained civil engineers, particularly in roading. This shortage is expected to become more acute in the short term.

How much can I earn?

Salaries vary, but civil engineering graduates usually earn between \$45,000 and \$100,000 per year, depending on experience and qualifications.

Mechanical engineering involves the design, manufacture and management of engineering projects and equipment maintenance.

The mechanical engineering industry has experienced substantial growth over recent years due to developments in, and globalisation of, engineering design, research, technology and manufacturing processes. Many of our graduates secure employment before they even finish their qualifications.

How much can I earn?

Salaries vary according to experience, but graduates usually earn between \$35,000 and \$80,000 per year.

Electrical engineering deals with the practical use of electricity in all its forms, especially the design and application of circuitry and equipment for power generation and distribution, building services, machine control and robotics.

There is presently a significant shortage of trained engineers and qualified technicians are in high demand for their skills and experience. New Zealand-trained engineering graduates have a good reputation worldwide for their work-readiness and high calibre.

How much can I earn?

Salaries vary according to experience, but graduates usually earn between \$35,000 and \$90,000 per year.

What opportunities are there in these industries?

All: Design Consultant or Engineer > Commissioning Engineer > Contract and Project Management Roles > Maintenance Management > Specialist Engineering Technician

Civil Engineering: Structures Designer > Local authorities > Mining companies > Construction companies

Mechanical Engineering: Mechanical Designer > Manufacturing Manager > Facilities Management

Electrical Engineering: Electrical Design, PLC Programming and fault finding > Energy Auditing and Energy Conservation

What skills do I need?

- > Analytical and problem-solving skills
- > Practical thinking
- > Good computer skills
- > The ability to plan, organise and adapt
- > Good communication and people skills



Certificate in Engineering (Level 3)*

Location	Dunedin
Duration	One year
Delivery	On campus
Level	3
Credits	120
Start	February, 2014
Fee	TBA
Apply	Preferred by 30 November, 2013

Enrol in this hands-on pre-apprenticeship programme and make raw materials into mechanical components, finished machines and structures. Completing this Certificate will reduce the amount of off-job training required in the following engineering apprenticeships: fitting and machining, tool making, general engineering, engineering maintenance, heavy fabrication, light fabrication and welding fabrication.

Note: A Certificate in Automotive and Mechanical Engineering (Level 2) is available to domestic students through the Youth Guarantee Scheme (see page 9).

Entry requirements

- > There are no academic requirements, but we prefer that you have 10 NCEA credits at Level 1 in each of literacy, numeracy, graphics and design technology **OR** equivalent.
- > **International students** will be individually assessed to ensure they have an acceptable level of secondary school achievement.
- > **If English is not your first language**, you must also demonstrate English language skills equivalent to an IELTS overall band score (academic) of 5.5, with no band score less than 5.0.

Further study options

After completing your apprenticeship, you could advance your skills with our New Zealand Diploma in Engineering.

New Zealand Diploma in Engineering

Mechanical Engineering; Civil Engineering;
Electrical Engineering

Location	Dunedin
Duration	Two years full-time; part-time options
Delivery	On campus; this programme is very practical and you will learn using real-life scenarios
Level	6
Credits	240
Start	February, 2014
Fee	Domestic: \$7,544 (first year) International: \$19,710 (first year)
Apply	Preferred by 31 October, 2013**

Want to become a skilled and competent engineering technician in the civil, mechanical or electrical profession? Develop a sound knowledge, understanding and practical appreciation of civil, mechanical and electrical engineering processes and theory, and an ability to apply your learning in a practical and innovative way.

Entry requirements

- > 48 NCEA credits at Level 2 in four subjects including 12 credits in mathematics **OR** equivalent qualifications/skills/experience.
- > 8 NCEA literacy credits at Level 1 or higher, including 4 credits in reading and 4 in writing.
- > **International students** will be individually assessed to ensure they meet diploma-level entry requirements.
- > **If English is not your first language**, you must also demonstrate English language skills equivalent to an IELTS overall band score (academic) of 6.0, with no band score less than 5.5.

Further study options

Advance your skills with our Bachelor of Engineering Technology programme. Completion of the New Zealand Diploma in Engineering can reduce the length of this degree by a year and a half, or with appropriate experience, two years on application.

*Subject to final approval.

**Places are limited across all disciplines so early application is advisable.

***If you want to study this qualification with a specialty in Electrical, please contact the School of Architecture, Building and Engineering for more information.



Bachelor of Engineering Technology***

Mechanical Engineering; Civil Engineering;
Electrical Engineering

Location	Dunedin
Duration	Three years full-time; part-time options
Delivery	On campus with a significant industry-based project to help you gain workplace experience
Level	7
Credits	360
Start	February, 2014
Fee	Domestic: \$7,544 (first year) International: \$19,710 (first year)
Apply	Preferred by 30 November, 2013

Answer the global demand for engineers with this internationally-recognised qualification. Combine engineering theory with the applied and practical components required in a wide range of industries. Learn skills in management, economics, communications, problem-solving and critical thinking while developing a deep understanding of the principles and practical application of modern technology in your area of specialisation.

Note: This programme has provisional accreditation from the Institution of Professional Engineers (NZ), which ensures it meets national and international standards.

Entry requirements

- > 42 NCEA credits at Level 3 or higher, including
 - > 14 credits in physics
 - > 14 credits in mathematics (algebra and/or calculus)
 - > 14 credits in up to two other subjects **OR** equivalent.
- > 8 NCEA literacy credits at Level 2 or higher in English or te reo Māori (4 credits in reading and 4 in writing) **OR** equivalent.
- > **International students** will be individually assessed to ensure they meet degree-level entry requirements. As part of our selection procedure we prefer that you have completed the equivalent of Year 13 physics and mathematics (algebra or calculus).
- > **If you are over 20**, you will be considered for special entry if you can demonstrate equivalent work experience.
- > **If English is not your first language**, you must also demonstrate English language skills equivalent to an IELTS overall band score (academic) of 6.0, with no less than 6.0 in writing and speaking, and no less than 5.5 in reading and listening.

As part of our selection procedure you will be required to undertake an interview.

Further study options

Increase your employment potential with postgraduate studies in engineering, available here and overseas.

Sport and Adventure Careers

Sport

also including Physical Activity, Health and Wellness, Physical Conditioning

Adventure

also including Snowsports, Avalanche Safety

Why keep your passion for sport and adventure to the weekend? People turn what they love doing into great careers every day. See what our Otago Institute of Sport and Adventure can offer you.

Not quite ready to launch into a Sport or Adventure career? See pages 8–9 for Foundation Studies options.



“This programme has put me in a position in one year that otherwise would have taken five or more. It allowed me to learn from people with high levels of expertise and experience.”

Simon Body

Graduate Diploma in Physical Conditioning (Level 7)





Sport

Get the best training, coaching and education and live your dreams! A sport graduate can work in areas such as sports management and administration, instructing, personal training or as a coach.

You could end up planning fitness and training programmes, coaching elite athletes, encouraging people into healthier lifestyles or managing sporting events. Or you could make use of your new skills while pursuing an athletic career.

There are plenty of job opportunities due to the increasing profile of sport and physical activity in New Zealand.

What skills will I need?

- > A love of sport
- > Self-motivation and a good work ethic
- > The ability to get on well with people
- > Adaptability and openness to new ideas
- > Good communication skills.

What opportunities are there in the industry?

High-performance coaching > Personal training > Event management > Sports administration > School sport coordination > Further tertiary study.

How much can I earn?

The average annual salary of our graduates is \$30,000 and upwards, and varies depending on factors such as job type and level of responsibility.

Entry requirements for our Diploma programmes

These entry requirements apply to both Diploma strands; Sport Management and Coaching, or Personal Training and Exercise Prescription:

- > We prefer that you have 48 NCEA credits at Level 2, with at least 8 credits in an English-rich subject **OR** equivalent qualifications experience.
- > **International students** will be individually assessed to ensure they meet diploma-level entry requirements.
- > **If English is not your first language**, you must also demonstrate English language skills equivalent to an IELTS overall band score (academic) of 6.0, with no less than 6.0 in writing and speaking, and no less than 5.5 in reading and listening.

Diploma in Applied Sport and Exercise Leadership (Level 5) (Sport Management and Coaching)

Location	Dunedin
Duration	Two years full-time; part-time options
Delivery	On campus with extensive work experience
Level	5
Credits	240
Start	February and July, 2014
Fee	Domestic: \$6,497 (first year) International: \$18,000 (first year)
Apply	Preferred by 30 November, 2013 or 31 May, 2014*

Keen to enter management, marketing, administrative or coaching roles associated with the sporting industry? Study alongside leading sports managers and elite coaches, use the latest in sports coaching technology and experience event and facility management.

Diploma in Applied Sport and Exercise Leadership (Level 5) (Personal Training and Exercise Prescription)

Location	Dunedin
Duration	Two years full-time; part-time options
Delivery	On campus with work placements in a range of different fitness facilities; gain personal training experience by supporting a number of real clients
Level	5
Credits	240
Start	February and July, 2014
Fee	Domestic: \$6,497 (first year) International: \$18,000 (first year)
Apply	Preferred by 30 November, 2013 or 31 May, 2014*

Do you want to join the fitness industry as a gym instructor, personal trainer or group fitness instructor? Gain the knowledge and practise the skills to enable you to enter this exciting industry.

Note: For both strands, you will be enrolled in the Certificate in Applied Sport and Exercise Studies (Level 4) (Speciality) in your first year, and on successful completion you can decide whether to continue into this Level 5 Diploma in year two.

Further study options

After completing either strand of our Diploma, expand your employment potential with our Bachelor of Applied Science (Physical Activity, Health and Wellness) or Bachelor of Applied Management (Sport Management). Other opportunities exist within the University of Otago's Bachelor of Education and Bachelor of Physical Education programmes.

*Applications will be accepted after this date if places are available

Entry requirements for our Graduate Diploma programmes

These entry requirements apply to all three of our Graduate Diplomas. Any additional requirements will be listed within the programme entry.

- > An undergraduate degree **OR** equivalent industry or professional experience.
- > **International students** will be individually assessed to ensure they meet diploma-level entry requirements.
- > **If English is not your first language**, you must also demonstrate English language skills equivalent to an IELTS overall band score (academic) of 6.0, with no band score less than 6.0.

Graduate Diploma in Physical Conditioning (Level 7)

Location	Online with compulsory block courses
Duration	One year full-time; part-time options
Delivery	Flexible delivery; study from any location in New Zealand with a broadband internet connection and attend three, one-week face-to-face intensives in Dunedin
Level	7
Credits	120
Start	February, 2014
Fee	Domestic: \$6,054 International: \$19,710
Apply	Preferred by 30 November, 2013*

This largely practical programme is ideal preparation if you wish to be a physical conditioner for elite athletes and teams. Learn how to design and implement effective physical conditioning programmes in the professional sporting environment and interact with the experts who support athletes in their conditioning and competition environment.

Note: You may complete the Graduate Diploma on a part-time basis while undertaking selected degree programmes at the University of Otago. Please contact the Otago Institute of Sport and Adventure to discuss your options.

Graduate Diploma in Applied Science (Physical Activity, Health and Wellness) and Graduate Diploma in Applied Science (Performance Analysis)**

Location	Online with block courses in Dunedin
Duration	One year full-time
Delivery	Gain valuable experience during industry placements
Level	7
Credits	120
Start	February, 2014
Fee*	Domestic: TBA International: TBA
Apply	Preferred by 30 November, 2013*

Physical Activity, Health and Wellness

Complete broad-based learning covering all three areas or narrow your focus to become equipped with specific skills. Enjoy the chance to undertake a research project and graduate with the ability to meet the needs of the changing health of the population.

Performance Analysis

Performance analysis considers all aspects of sport from talent identification and development to live updates during games. This is an area that is rapidly increasing and this programme will not only expose you to a number of methods currently used in the sporting industry, but also to new and innovative techniques and strategies. Aspects of decision-making and skill development are also a feature of this exciting qualification.

Further study options

After completing any of our graduate diploma programmes, bridge across into our other Sport and Adventure qualifications, or postgraduate qualifications at other tertiary institutions (you may be given credit for previous study at Otago Polytechnic).

*Applications will be accepted after this date if places are available

**Subject to final approval



Bachelor of Applied Science (Physical Activity, Health and Wellness)

Location	Dunedin
Duration	Three years full-time; part-time options
Delivery	On campus with two work placements where you will gain valuable industry insight
Level	7
Credits	360
Start	February, 2014
Fee	Domestic: \$6,305 (first year) International: \$18,700 (first year)
Apply	Preferred by 30 November, 2013*

Plan a career in the sports science, health and wellness and fitness industries. Develop the knowledge, critical thinking and reflective practice in a stimulating environment that incorporates a mix of hands-on and theoretical learning. The Certificate in Health (Level 4) is a bridging option (see page 15).

Entry requirements

- > 42 NCEA credits at Level 3, including
 - > 14 credits in **EITHER** biology or human biology or physical education (other sciences may be considered)
 - > 14 credits in **EITHER** core health/health education, physics, statistics, maths, chemistry, geography or psychology
 - > 14 other credits across any subjects **OR** recent and successful Level 3 tertiary study in a relevant area **OR** equivalent.
- > **International students** will be individually assessed to ensure they meet degree-level entry requirements and must have achieved the equivalent of Year 13 biology, human biology or physical education (other sciences may be considered).
- > You must have a current First Aid Certificate before you can commence practical work.
- > You must declare any criminal convictions and give permission for a police check.
- > **If English is not your first language**, you must also demonstrate English language skills equivalent to an IELTS overall band score (academic) of 6.0, with no band score less than 6.0.

Further study options

Choose to continue learning and bridge across into other Otago Institute of Sport and Adventure programmes. Or increase your career prospects by applying for postgraduate studies at other tertiary institutions.

Adventure

Pursue an action-packed lifestyle in the spectacular adventure playgrounds of Dunedin and Wanaka.

Adventure graduates work in a variety of outdoor locations teaching activities such as skiing, snowboarding, sea kayaking, abseiling, diving, fishing, rock climbing, mountain biking, trekking and caving, while minimising risks and addressing safety concerns.

What skills will I need?

- > A love of the outdoors
- > An excellent level of health and fitness
- > Good communication and people skills
- > The ability to motivate people
- > A mature approach and good decision-making skills.

What opportunities are there in the industry?

Adventure guiding and instructing > Employment in outdoor adventure companies > Ski field roles (instructing, patrolling, snow safety, lifts, rentals) > Tourism ventures > Management roles at ski fields and tourism and adventure companies.

The demand for qualified instructors is increasing due to emphasis on safe participation in sport and a growing adventure tourism industry. In recent years, up to 40 per cent of the staff at the Cardrona Alpine Resort in Wanaka have held an Otago Polytechnic instructing qualification.

How much can I earn?

Salaries vary, but outdoor recreation and snowsport instructors usually earn between \$20,000 and \$45,000 per year. Many are self-employed or work on short-term seasonal contracts.

Certificate in Avalanche Safety and Snowsport Instructing (Ski) or (Snowboard)

Location	Cardrona Alpine Resort in Wanaka
Duration	20 weeks full-time
Delivery	A mix of classroom-based theory work and field-based practical sessions
Level	3
Credits	120
Start	May, 2014
Fee	Domestic: \$7,133 International: \$19,710
Apply	Preferred by February, 2014

Are you an experienced rider with an interest in ski or snowboard instructing and a sense of both adventure and responsibility? Answer the call for qualified snowsport instructors with this internationally-recognised qualification. Learn about mountain snow and weather conditions, risk management, safe mountain travel techniques, navigation, radio communications and ski maintenance, and how to handle emergency situations.

Note: The New Zealand Mountain Safety Council Avalanche Stage 1 and New Zealand Snowsports Instructors' Alliance/Snowboard Instruction New Zealand Levels 1 and 2 qualifications may be completed within this programme.

Entry requirements

- > You must be a reasonably confident skier/rider on a variety of terrain and snow conditions.
- > You must submit a detailed logbook detailing your riding experience over at least a two-year period.
- > You must submit a health and safety declaration.
- > You must submit a referee's report.
- > **International students** will be individually assessed to ensure they have an acceptable level of secondary school achievement.
- > **If English is not your first language**, you must also demonstrate English language skills equivalent to an IELTS overall band score (academic) of 5.5, with no less than 6.0 in writing, and no less than 5.5 in all other bands.

Further study options

Broaden your employment prospects with the NZMSC Avalanche Safety Stage 2, the Diploma in Avalanche Studies, the NZSIA/SBINZ Level 3 Ski/Snowboard Instructor, Coach, Examiner/Trainer and the ISIA International Instructor Certification.

Certificate in Snowsport Instructing (Ski) or (Snowboard)

Location	Cardrona Alpine Resort in Wanaka
Duration	18 weeks full-time
Delivery	A mix of classroom-based theory work and field-based practical sessions
Level	4
Credits	120
Start	June, 2014
Fee	Domestic: \$6,902 International: \$19,710
Apply	Preferred by February, 2014

If you are an intermediate level or higher skier/snowboarder looking for an exciting career in snowsport instructing, this practical programme would suit you. With the spectacular winter playground of the Southern Alps as your classroom, shadow the lessons of working instructors before taking sole charge.

Note: The NZSIA Level 1 Ski Instructor, NZSIA/SBINZ Level 1 Snowboard Instructor, NZSIA Level 2 Ski Instructor, NZSIA/SBINZ Level 2 Snowboard Instructor qualifications may be completed within this programme.

Entry requirements

- > You must be a reasonably confident intermediate skier/rider on a variety of terrain/snow conditions.
- > You must submit a detailed logbook detailing your riding experience over at least a two-year period.
- > You must submit a health and safety declaration.
- > You must submit a referee's report.
- > **International students** will be individually assessed to ensure they have an acceptable level of secondary school achievement.
- > **If English is not your first language**, you must also demonstrate English language skills equivalent to an IELTS overall band score (academic) of 5.5, with no less than 5.0.

Further study options

Develop your skills further with our Certificate in Avalanche Safety and Snowsport Instructing (Ski) or (Snowboard), the NZSIA/SBINZ Level 3 Ski/Snowboard Instructor, Coach, Examiner/Trainer and the ISIA International Instructor Certification.



Diploma in Outdoor Leadership and Management (Level 5)

Location	Dunedin
Duration	Two years full-time
Delivery	On campus with overnight or weekend field trips throughout the year
Level	5
Credits	240
Start	February, 2014
Fee	Domestic: \$7,322 (first year) International: \$18,000 (first year)
Apply	Preferred by 30 November, 2013*

Strengthen and develop skills in the technical, professional, instructional and leadership aspects of a range of outdoor pursuits. A strong focus on practical learning, self-evaluation, goal setting and industry experience will enhance your ability to gain employment in a range of guiding/instructing positions in the outdoors, both nationally and internationally.

Note: You will enrol in the Certificate in Outdoor Pursuits (Level 4) in year one, and upon successful completion can choose whether to continue into this Level 5 Diploma in year two.

Entry requirements

- > You must submit a logbook showing at least 30 hours of relevant outdoor recreation experience.
- > 48 NCEA credits at Level 2, including 8 credits at Level 2 in an English-rich subject **OR** equivalent qualifications/experience.
- > **International students** will be individually assessed to ensure they meet diploma-level entry requirements.
- > We prefer that you have a current First Aid Certificate.
- > **If English is not your first language**, you must also demonstrate English language skills equivalent to an IELTS overall band score (academic) of 6.0, with no band score less than 6.0.

Note: Direct entry to year two of the programme is available to selected applicants.

Further study options

Students who successfully complete year one are strongly encouraged to enter year two. Upon successful completion of the two year Diploma, continue your learning with our Bachelor of Applied Science (Physical Activity, Health and Wellness). Alternatively, enter the outdoor adventure industry workforce or undertake further study or training both in New Zealand and overseas.



Diploma in Avalanche Studies

Location	Online with block courses
Duration	One year full-time; up to four years part-time
Delivery	Two block courses between 5-8 days long will be held on avalanche terrain in Central Otago
Level	6
Credits	122-127 (depending on elective options)
Start	Flexible
Fee	Domestic: \$5,930 International: \$18,720
Apply	Anytime

Develop your knowledge and skills in avalanche safety so you can plan and manage avalanche safety programmes for ski fields, guiding or roading operations and tourism ventures – or instruct in these areas. Prepare for employment as a Snow Safety Manager or instructor, ensuring the safety of people and assets in alpine areas.

Note: This programme incorporates the NZMSC Avalanche Safety Stage 2 award, a prerequisite for most industry snow safety or ski patrol management roles.

Entry requirements

- > NZMSC Avalanche Safety Stage 1.
- > **International students** will be individually assessed to ensure they meet diploma-level entry requirements.
- > You must submit a health and safety declaration.
- > You must have access to the internet.
- > **If English is not your first language**, you must also demonstrate English language skills equivalent to an IELTS overall band score (academic) of 6.0, with no less than 6.0 in writing and speaking, and no less than 5.5 in all other bands.

Further study options

This is the highest award currently offered in New Zealand.

*Applications will be accepted after this date if places are available

Life Sciences Careers

Horticulture

also including Arboriculture, Viticulture, Sports Turf Management

Veterinary Nursing and Animal Health

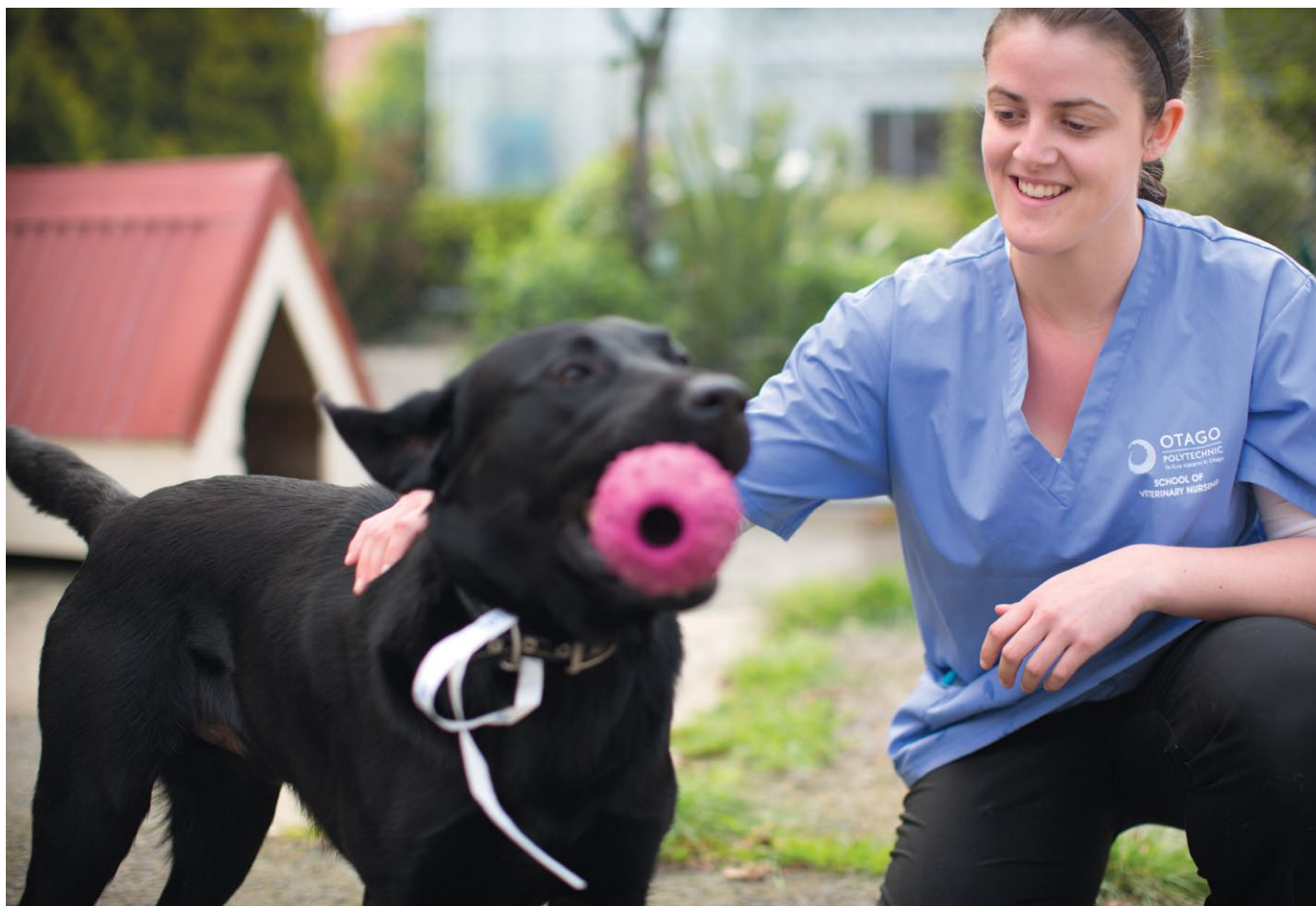
People who care for plants and animals may just have the best jobs in the world! If you love to be outdoors and work with your hands, or have a passionate interest in the care and welfare of animals then we can help you find your dream career.

Not quite ready to launch into a career in Life Sciences? See pages 8–9 for Foundation Studies options.



“My lecturers were fun, easy-going people – extremely knowledgeable and just passionate. It was awesome learning from people who’d been doing it for years and who enjoyed teaching us.”

Logan Dally
National Certificate in Horticulture
(Arboriculture) (Level 4)



Horticulture

Horticulturists assist in the design, production and maintenance of plants, food and flower crops, gardens and landscapes for both local and international markets.

The industry is extremely diverse and you may specialise in a number of areas including fruit production, viticulture (growing grapes for making wine), arboriculture (pruning, felling, transplanting and maintaining the health of trees and shrubs), amenity horticulture (care, maintenance and growth of ornamental plantings), landscape construction (building and maintaining gardens and landscapes), sports turf management (preparing and maintaining sports fields) and nursery production (propagating and growing plants for sale).

What skills do I need?

- > A passion for working outdoors
- > Physical fitness
- > Planning and organisational skills
- > Good communication skills
- > An eye for detail.

What industry opportunities are there?

Commercial and retail nursery worker > Landscaping company worker > Groundskeeper and turf manager > Orchardist > Irrigation Technician > Contract climber > Seed collector > Airport biosecurity > Department of Conservation > Contracts Manager > Viticulturist > Vineyard Supervisor/Manager > Horticulture-related Sales Consultant > Self-employed.

New Zealand's horticulture and related industries are diverse and have experienced steady growth. This looks set to continue well into the future, which means qualified horticulturists in any specialist field are in demand across the country.

How much can I earn?

Salaries vary depending on experience, location and job type, but full-time workers usually earn between \$25,000 and \$60,000 per year. Arborists can earn \$15 to \$18 per hour after graduation and \$20 to \$25 per hour with experience, and viticulturists may make up to \$100,000 annually with experience. Many people in these industries are self-employed.



Certificate in Sustainable Growing (Levels 2 and 3)

Location	Online
Duration	One semester full-time (per level); part-time module-by-module study offered
Delivery	Flexible delivery from Central Otago, ensuring you can study anytime and from anywhere with an internet connection
Levels	2 and 3
Credits	60 (per level)
Start	February, May, August and October, 2014
Fee	Domestic: \$880 (per Certificate) OR \$220 (per module) This programme is NOT available for international students
Apply	Anytime

This programme meets the practical needs of lifestyle-block owners or home gardeners who want to grow crops sustainably for supply to farmers' markets. Learn about efficient water use, growing vegetables and fruit using organic methods, composting, propagation, plant biology, pests and weeds, and understanding the climate and weather.

Entry requirements

- > Open entry but you must have access to the internet.

Further study options

Expand your employment potential by studying the National Certificate in Horticulture (Level 4).

Certificate in Sustainable Farming (Levels 2 and 3)

Location	Online
Duration	One semester full-time (per level); part-time module-by-module study offered
Delivery	Flexible delivery from Central Otago, ensuring you can study anytime and from anywhere with an internet connection
Levels	2 and 3
Credits	60 (per level)
Start	February, May, August and October, 2014
Fee	Domestic: \$880 (per Certificate) OR \$220 (per module) This programme is NOT available for international students
Apply	Anytime

Learn how to farm in a sustainable "clean and green" manner – ideal if you are wishing to farm a lifestyle block or embark on a farming career.

Entry requirements

- > Open entry but you must have access to the internet.

Further study options

Advance your skills with the National Certificate in Horticulture (Level 4).

National Certificate in Sports Turf Management (Level 4)

Location	Central Otago
Duration	Two years full-time
Delivery	Year one: On campus Year two: Internship at top sporting venue and online teaching
Level	4
Credits	223
Start	February, 2014
Fee	Domestic: \$5,654 (first year) International: \$19,760 (first year)
Apply	Preferred by December, 2013*

Greenkeepers and groundskeepers are in high demand for the management and maintenance of golf courses, cricket wickets, rugby, soccer and artificial turf. Undertake a balance of theoretical and practical studies in New Zealand's only full-time sports turf management programme. Build important industry relationships and gain hands-on experience with an internship placement at a top sporting venue in New Zealand or Australia.

Entry requirements

- > Open entry.
- > **If English is not your first language**, you must demonstrate English language skills equivalent to an IELTS overall band score (academic) of 5.5, with no band score less than 5.0, and meet your country-specific equivalent entry requirements listed on pages 82–85.

Further study options

Expand your knowledge further with the National Diploma in Sports Turf Management (Levels 6 and 7), available through the Sports Turf Industry Training Organisation.

National Certificate in Horticulture (Level 4) Landscape Construction or Sustainable Horticulture

Location	Dunedin
Duration	One year full-time; part-time options
Delivery	On campus; online learning may be possible depending on your choice of options
Level	4
Credits	146–148 (depending on options chosen)
Start	February, 2014
Fee	Domestic: \$5,618 International: \$19,240
Apply	Preferred by 30 November, 2013

Gain an excellent grounding in the principles and skills of horticulture. Undertake a mix of practical and theoretical training and focus on the area that interests you most from the two options available: Landscape Construction or Sustainable Horticulture. Enjoy making use of our nursery facilities, permaculture garden, living campus and the world-famous Dunedin Botanic Garden.

Entry requirements

- > Open entry.
- > **If English is not your first language**, you must demonstrate English language skills equivalent to an IELTS overall band score (academic) of 5.5, with no band score less than 5.0, and meet your country-specific equivalent entry requirements listed on pages 82–85.

Further study options

Increase your career prospects with the National Certificate in Horticulture (Advanced) (Level 4), Diploma in Horticulture (Level 5) or Diploma in Viticulture (Level 5).

National Certificate in Horticulture (Arboriculture) (Level 4)

Location	Dunedin
Duration	One year full-time
Delivery	On campus plus four weeks of work experience
Level	4
Credits	150
Start	February, 2014
Fee	Domestic: \$6,314 International: \$19,240
Apply	Preferred by 30 November, 2013

Arborists – sometimes known as tree surgeons – work in a specialised field involving pruning, felling, transplanting and maintaining the health of trees and shrubs. Learn a wide range of arboriculture skills at a tradesperson-level through both practical and theoretical instruction, and develop these abilities during work experience opportunities.

Note: Scholarships are available, conditions apply.

Entry requirements

- > Open entry but you must have the physical and mental ability/strength required for tree climbing.
- > You must be drug free while enrolled in this programme.
- > **If English is not your first language**, you must also demonstrate English language skills equivalent to an IELTS overall band score (academic) of 5.5, with no less than 6.0 in writing, and no less than 5.5 in all other bands, and meet country-specific equivalent entry requirements listed on pages 82–85.

Further study options

Arboriculture may also be studied at diploma level in New Zealand.

National Certificate in Horticulture (Level 4) Viticulture, Landscaping, General Horticulture or Fruit Production

Location	Central Otago
Duration	One year full-time; part-time options
Delivery	On campus
Level	4
Credits	140
Start	February, 2014
Fee	Domestic: \$6,242 International: \$19,240
Apply	Preferred by December, 2013*

Enjoy an even balance of theoretical and practical studies, making use of our campus nursery, hydroponics unit, vineyard and crop production facility. Under the guidance of highly experienced lecturers you will develop a wide range of practical skills, backed by technical knowledge. Paid work experience opportunities within Central Otago's extensive horticulture industry are also available for students taking the viticulture, landscaping or fruit production strands of this qualification.

Entry requirements

- > Open entry.
- > **If English is not your first language**, you must demonstrate English language skills equivalent to an IELTS overall band score (academic) of 5.5, with no band score less than 5.0, and meet your country-specific equivalent entry requirements listed on pages 82–85.

Further study options

Advance your horticultural knowledge with the Diploma in Horticulture (Level 5) or Diploma in Viticulture (Level 5).

International students: This programme can be studied as a pathway into the Diploma in Horticulture (Level 5) and the Diploma in Viticulture (Level 5) (see page 68). For more information please contact the Central Otago campus.

*Applications will be accepted after this date if places are available

National Certificate in Horticulture (Advanced) (Level 4) Amenity Horticulture, Landscape or Nursery Production

Location	Dunedin
Duration	One year full-time; part-time options
Delivery	On campus with industry experience; some online part-time options available
Level	4
Credits	100
Start	February, 2014
Fee	Domestic: \$7,014 International: \$19,240
Apply	Preferred by 30 November, 2013

Further develop your theoretical and practical skills around the technical and operational demands of the horticultural industry. Gain a wide range of horticultural skills at an advanced tradesperson-level, make use of the campus horticultural facilities and undertake extensive learning in an industry sector.

Entry requirements

- > There are no academic entry requirements. However, we prefer applicants to hold the National Certificate in Horticulture (Level 4) **OR** equivalent qualifications/experience.
- > **International students** will be individually assessed to ensure they meet the entry requirements.
- > **If English is not your first language**, you must also demonstrate English language skills equivalent to an IELTS overall band score (academic) of 5.5, with no band score less than 5.0.

Further study options

Acquire higher-level horticultural skills with our Diploma in Horticulture (Level 5) or Diploma in Viticulture (Level 5). Horticulture may also be studied at degree-level in New Zealand.

Diploma in Horticulture (Level 5)

Location	Central Otago
Duration	One year full-time; three years part-time option/ distance options
Delivery	Domestic: Online with block courses in Central Otago* or full-time on campus, International: On campus. Both domestic and international students will be required to undertake extensive work experience.
Level	5
Credits	120
Start	February and July, 2014
Fee	Domestic: \$6,168 International: \$14,000
Apply	Preferred by 30 November, 2013

Ideal if you wish to extend your practical ability and gain management skills in horticulture. Focus on the technical and supervisory management of the horticulture industry. Options include Fruit Production, Landscaping and Nursery Management, and Amenity Horticulture. This is a great solution for those who wish to gain a qualification and develop their skills while in employment.

Entry requirements

- > If you wish to enrol in this programme, you must hold the National Certificate in Horticulture (Level 4) **OR** equivalent qualifications/ experience. If not, you must complete the two year programme.
- > **International students** will be individually assessed to ensure they meet diploma-level entry requirements.
- > You must have access to the internet.
- > **If English is not your first language**, you must also demonstrate English language skills equivalent to an IELTS overall band score (academic) of 6.0 (writing and speaking score no less than 6.0 and reading and listening bands no less than 5.5).

Further study options

Continue your learning with degree and postgraduate-level horticulture programmes at Lincoln and Massey Universities in New Zealand.

Diploma in Viticulture (Level 5)

Location	Central Otago
Duration	One year full-time; three years part-time option/ distance options
Delivery	Domestic: Online with block courses in Central Otago* or full-time on campus, International: On campus. Both domestic and international students will be required to undertake extensive work experience.
Level	5
Credits	120
Start	February and July, 2014
Fee	Domestic: \$6,159 International: \$14,000
Apply	Anytime

Focus on the technical and supervisory skills required in the viticulture industry, both here and overseas. Ideal if you wish to extend your practical ability and develop management skills while in employment. You may undertake the full programme or select individual units in the subject areas of your choice.

Entry requirements

- > If you wish to enrol in this programme, you must hold the National Certificate in Horticulture (Level 4) **OR** equivalent qualifications/ experience. If not, you must complete the two year programme.
- > **International students** will be individually assessed to ensure they meet diploma-level entry requirements.
- > You must complete the practical components of this programme in an industry workplace.
- > You must have access to the internet.
- > **If English is not your first language**, you must also demonstrate English language skills equivalent to an IELTS overall band score (academic) of 6.0 (writing and speaking score no less than 6.0 and reading and listening bands no less than 5.5).

Further study options

Expand your knowledge and increase your career options with Level 6 or degree-level study in viticulture or oenology (the science of winemaking).

Note: If you are unsure whether you meet the entry requirements for the Diploma in Horticulture (Level 5) or the Diploma in Viticulture (Level 5), contact us and a programme supervisor will work with you to determine your eligibility. **International students:** the international entry requirements for the Diploma in Horticulture (Level 5) and Diploma in Viticulture (Level 5) are currently under review. Please contact the Central Otago campus for more information.

*Learning support available from Dunedin and Central Otago campuses

Veterinary Nursing and Animal Health

Veterinary and animal-related industries work to promote the health, husbandry and welfare of animals such as household pets and livestock.

Para-professionals, such as veterinary nurses and rural animal technicians, work with small and large animals in a variety of different places such as veterinary clinics, farms, zoos, SPCA, kennels and catteries. They support and assist the veterinarian with hospitalised patients and their responsibilities may include preparing and administering medication, monitoring and assisting with surgery, anaesthetics and radiography, helping maintain IV fluids, and first aid. In addition, they ensure animals remain in optimal health by providing proactive and preventative health-care information and support for pet owners on topics such as nutrition, parasite control, vaccinations and neutering.

What skills do I need?

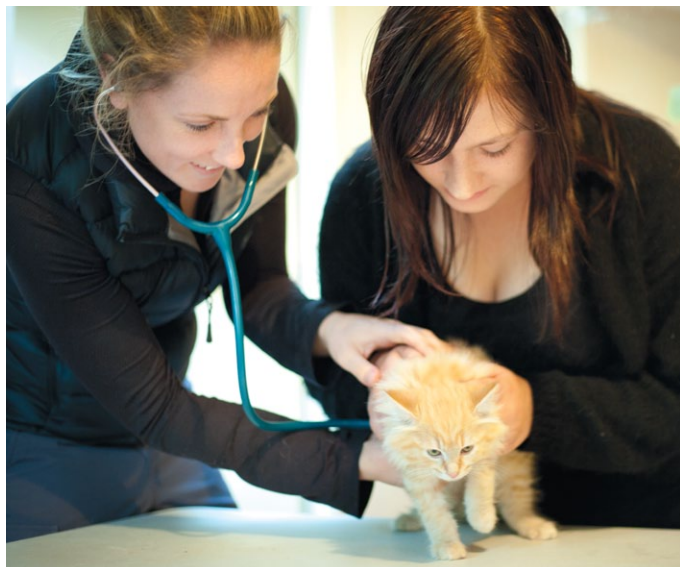
- > A genuine interest in animals and their welfare
- > Good communication and computer skills
- > The ability to handle stressful emergency situations
- > The ability to work well in a team
- > Self-discipline and excellent time management skills
- > To be sensible and highly motivated.

What opportunities are there in the industry?

Veterinary Nurse > Rural Animal Technician > Animal control and training > Kennel and cattery management > SPCA work > Pet grooming > Wildlife management > Biosecurity (Dog Handler) > Zoo Keeper > Animal Breeder.

The animal health industry is vital to the success of New Zealand's economy and there is strong demand for qualified and experienced veterinary nursing and rural animal technician graduates to assist veterinarians.





National Certificate in Animal Care

Location	Online with compulsory block courses
Duration	Six months full-time; one year part-time
Delivery	Learn via online-facilitated teaching sessions and discussion forums, downloadable course material, AND two compulsory block courses (approx. three to four days each) at various locations: Dunedin, Auckland, Tauranga, Christchurch or Wellington
Level	2
Credits	65
Start	Full-time: July, 2014*, Part-time: February, 2014
Fee	Domestic: \$3,317 This programme is NOT available for international students
Apply	Applications received up until the start date of the programme

Learn to work with both small and large animals and gain direct entry into year two of the National Certificate in Veterinary Nursing (part-time, online option only).

Note: There is no work placement in this programme but you will need access to animal-related facilities (not veterinary clinics) to complete your study.

Entry requirements

- > There are no academic entry requirements.
- > You must have access to a computer, camera, video and the internet.
- > You must submit a health declaration.
- > You must declare any criminal convictions and give permission for a police check.
- > We prefer that you have
 - > NCEA Level 1 science **OR** equivalent
 - > NCEA Level 2 biology OR School Certificate biology **OR** equivalent
 - > computer skills equivalent to NCEA Level 1
 - > an understanding of the animal-related and veterinary industry
 - > worked or observed in a veterinary clinic or animal facility
 - > a commitment to animal welfare.

Further study options

To achieve the National Certificate in Veterinary Nursing, you will need to study part-time, online for a further year after completing the National Certificate in Animal Care.

Note: To complete the National Certificate in Veterinary Nursing in one year, you must enrol in the full-time, on-campus National Certificate in Veterinary Nursing programme in Dunedin. Year one of the part-time National Certificate in Veterinary Nursing qualification is the National Certificate in Animal Care. This must be completed before you can gain entry into year two of the National Certificate in Veterinary Nursing (part-time option only). There is no requirement to complete the National Certificate in Animal Care to study the full-time delivery option.

National Certificate in Veterinary Nursing

Location	Full-time: Dunedin (only option for international students) Part-time: Online-facilitated teaching sessions, discussion forums and course material, and two compulsory block courses (approx. three to four days each) at various locations: Dunedin, Christchurch, Wellington or Auckland, and work experience
Duration	One year full-time; two years part-time
Delivery	Both full-time and part-time students must complete 260 hours of work experience
Level	5
Credits	166
Start	February, 2014
Fee	Domestic: \$5,847 International: \$18,720
Apply	Applications received until the start date of the programme**

If you are passionate about the care and welfare of animals large and small, this theoretical and practical programme will prepare you for a career as a veterinary nurse. **Full-time students** will undertake one to two days of work experience per week in animal-related facilities and veterinary clinics. **Part-time students** will undertake two compulsory block courses per year plus one day of work experience per week. This work experience must be in a veterinary clinic and you are responsible for arranging this.

Note: Year one of the part-time National Certificate in Veterinary Nursing qualification is the National Certificate in Animal Care. This must be completed before you can gain entry into year two of the National Certificate in Veterinary Nursing (part-time option only). There is no requirement to complete the National Certificate in Animal Care to study the full-time delivery option.

Entry requirements

- > To enter the **full-time programme**: 60 NCEA credits at Level 2 **OR** equivalent.
- > To enter the **part-time programme**: National Certificate in Animal Care.
- > **International students** may only enter the full-time programme and will be individually assessed to ensure they meet the entry requirements.
- > All applicants
 - > must have access to a computer, camera, video and the internet
 - > must submit a health declaration
 - > must declare any criminal convictions and give permission for a police check.
- > **If English is not your first language**, you must also demonstrate English language skills equivalent to an IELTS overall band score (academic) of 6.0, with no less than 6.0 in writing and speaking, and no less than 5.5 in reading and listening.

Further study options (domestic students only)

Continue learning and broaden your career prospects with the National Diploma in Veterinary Nursing or the Certificate in Rural Animal Technology.

*Dependent on sufficient numbers

**Full-time: The first 40 applicants meeting the stated entry requirements will be accepted, Part-time: At completion of the National Certificate in Animal Care



National Diploma in Veterinary Nursing

Location	Online with compulsory block courses
Duration	Two years part-time (commence study in either year)
Delivery	Online-facilitated teaching sessions, discussion forums and course material, extensive work experience and two compulsory block courses per year (approx. 4 days each) in Dunedin
Level	5
Credits	181
Start	January, 2014
Fee*	Domestic: \$3,035 This programme is NOT available for international students
Apply	Applications received until the start date of the programme

Graduate with the following skills to perform without supervision in a veterinary clinic: advanced veterinary nursing, laboratory tasks, client education, staff training and financial management. Gain advice and support from staff members who ensure you receive up-to-date animal health-care and veterinary-nursing training. You must organise your own work placements at a veterinary clinic for the 1,040 hours of work experience required during this programme; this equates to at least two days per week each year.

Entry requirements

- > National Certificate in Veterinary Nursing **OR** equivalent qualifications/experience.
- > You must have access to a computer, camera, video and the internet.
- > You must submit a health declaration.
- > You must declare any criminal convictions and give permission for a police check.

Further study options

Continue learning and increase your employment potential with our Certificate in Rural Animal Technology.

Certificate in Rural Animal Technology

Location	Online with compulsory block courses
Duration	One year part-time
Delivery	Online-facilitated teaching sessions, discussion forums and course material, work experience and two compulsory block courses in Dunedin
Level	5
Credits	75
Start	February, 2014
Fee*	Domestic: \$3,991 This programme is NOT available for international students
Apply	Applications received up until the start date of the programme

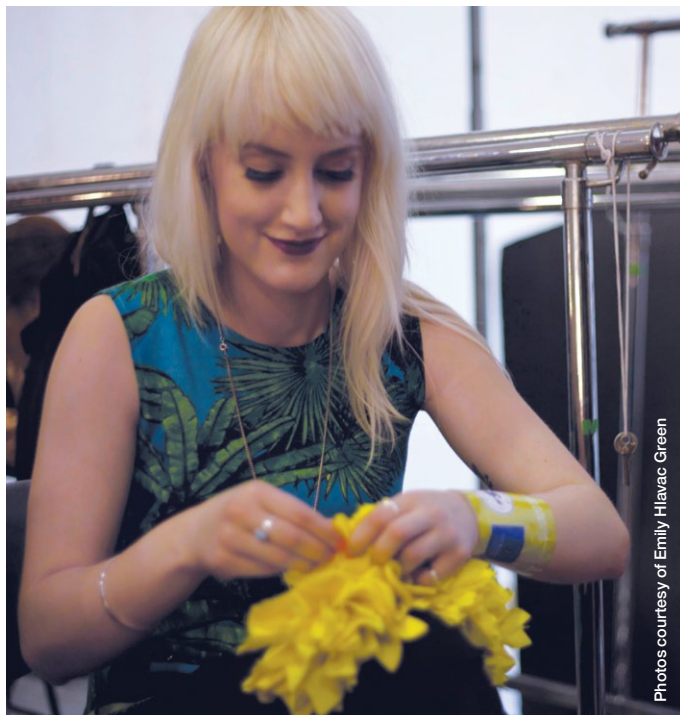
Attain the sought-after skills of a rural veterinary nurse and technician. You will be able to work cooperatively and independently with clients, manage and monitor rural reproductive and preventative health programmes and contribute to the successful operation of a rural veterinary clinic. You must complete 150 hours of practical farm experience and 150 hours of work experience in a rural veterinary clinic; you are responsible for organising these work placements.

Entry requirements

- > National Certificate in Veterinary Nursing **OR** equivalent.
- > You must have access to a computer, camera, video and the internet.
- > You must submit a health declaration.
- > You must declare any criminal convictions and give permission for a police check.

Further study options

Expand your knowledge base and employment potential with our National Diploma in Veterinary Nursing.



Photos courtesy of Emily Hlavac Green



Bachelor of Design (Fashion) student Olivia Bloxham travelled to Shanghai as part of a cultural exchange between Otago Polytechnic and the Shanghai University of Engineering Science, where her fashion collection was photographed in some of the city's most interesting and iconic locations.

Study Abroad and Exchange programmes

Want to come here?

Are you an **international student** and would like to study at Otago Polytechnic for one or two semesters? This is a great way to improve your English and learn about New Zealand culture, and to study in an area similar to what you are studying in your home institution.

Study Abroad

You can study at Otago Polytechnic for one or two semesters.

- > You will pay international fees to Otago Polytechnic.
- > You must check with your institution's international or study abroad office about credit towards your home degree.

Exchange programme

You can apply for an Exchange programme if your institution is an Otago Polytechnic partner through an exchange agreement.

- > You must be nominated for the programme by the study abroad or international office of your institution.
- > Otago Polytechnic must accept your application.
- > If selected, you remain enrolled with your institution.
- > You continue to pay your home institution fees, and do not pay Otago Polytechnic tuition fees.
- > The courses you study may be credited towards your home degree.

To see if your institution is a partner to Otago Polytechnic and to find out more about our Study Abroad and Exchange programmes, email: international@op.ac.nz

Want to go there?

Otago Polytechnic provides opportunities for all students to complete part of their degree overseas through exchange agreements with partner institutions.

An exchange experience will allow you to

- > Gain specialised knowledge about your area of study
- > Gain international experience
- > Develop international networks
- > Gain insights about another culture
- > Learn a new language
- > Make new friends
- > Travel and see the sights.

For more information about our Study Abroad and Exchange programmes available at Otago Polytechnic, email: international@op.ac.nz

Supporting your success

Starting life as a new student can be exciting as well as challenging. Our Student Success team is here to support you and make sure your time at Otago Polytechnic is rewarding and fun!

Student Advisors

Kitty Keogh and Sheena Roy are based at the Dunedin campus and are available to talk to in person, via phone or email anytime. The Student Advisors can help students with any personal problems and study issues as you settle into life at Otago Polytechnic, and offer continued assistance throughout the academic year.

International Student Advisor

Yvonne Fogarty is the International Student Advisor and is dedicated to assisting you before and during your studies. She will work to ensure that you get personalised support while you are studying. Yvonne is based on the Dunedin campus but is available by phone and email to provide support and advice to off-campus students.

Career support

Jane Field is a highly experienced Career Practitioner who can help with career and study planning. Jane is based on the Dunedin campus but is available via phone and email to provide career and study support.

Kaiārahi support

Tena ra koutou katoa kua tae mai ki te Kura Matatini ki Otago mo tou haerenga. He mihi mahana tenei.

Tama Tuirangi and Brayden Murray are available to give support to Māori students and to assist with a range of individual issues.

Pasifika support

Anna Seiuli provides support to Pacific Islands students. Those who identify as being of Pacific Islands descent will be contacted by Anna, and regular fono are held during the year. Anna is based in Dunedin but can provide support and advice via phone or email to students on other campuses.

Disability support

We offer support tailored to your individual needs. This may include classroom note-takers, readers/writers, tutors, equipment, adaptive technology, orientation and liaison with lecturing staff and community agencies.

Contact our team

New Zealand **0800 762 786**

International **+64 3 477 3014**

Email **studentsuccess@op.ac.nz**

Website **www.op.ac.nz/studentssupport**

Please see page 88 for individual staff contact details.

OPSA

Otago Polytechnic Students' Association

Students are the heart of Otago Polytechnic's culture. As a student, it is vital you have an independent organisation to represent and promote your views and interests.

OPSA safeguards your welfare and ensures that you have a successful study experience. It is run by students, for students, and provides advice, assistance, representation and advocacy to protect your rights so you can spend time focusing on your studies.

Events

OPSA provides access to social events, entertainment and recreation during the year, many with free entry. Orientation gives you the opportunity to become familiar with the Polytechnic, meet other students, hear live music and participate in barbecues, quizzes, entertainment, competitions, food festivals, sports and events.

Services

OPSA manages a vast range of student services and facilities like the UNIPOL sport and recreation centre www.unipol.co.nz, a second-hand bookshop, Gyro student magazine www.gyro.org.nz, Student Job Search, Student Discount Directory, student ID and discount cards, cheap phone cards and much more! (Some services are limited to Dunedin students.)

Clubs and Courses

OPSA and the Otago University Students' Association operate Recreation Services where you can participate in a wide range of sports, activities and social events. You may choose to join an international students' club such as the Chinese Students' Association, or a recreational group like the Tramping Club. Find out more at www.ousa.org.nz/main/recreation (Dunedin only)

For a full list of OPSA's services, visit www.opsa.org.nz

Otago Polytechnic Students' Association

Manaaki/Student Centre, Harbour Terrace, Dunedin

Student Services

here to help, every step of the way

Our student services and facilities are extensive and designed to support and enhance your student life.

We make sure that you have access to the best information, advice, support and assistance prior to, and during, your studies.

We organise a variety of social and recreational activities throughout the year for students at each of our Dunedin, Auckland and Central Otago locations.

Your student services and facilities

Chaplain

Find out about places of worship or talk to someone who can understand your spiritual needs. Mike Wright and Paul Armstrong are experienced chaplains who can help you with a range of issues, such as homesickness, grief and blessing flats. Both chaplains are based in Dunedin, but are available via phone or email for students who are based on other campuses.

Email chaplain@op.ac.nz

Counselling services

Available to help you with any issues you may have in your personal life or studies. Our counsellors will talk with you and assist you to work through these concerns. There are three trained counsellors on the Dunedin campus and they are available to see students between 8am and 5pm, Monday to Friday. This is a free service.

If you're a student studying in Central Otago and would like to book an appointment to see a counsellor, please contact the Central Otago campus. If you are an international student

studying in Auckland, you will have an academic mentor who will meet you at the beginning of your study and at least every four weeks to discuss your progress and provide guidance.

Online and telephone counselling

A counsellor is available Monday evenings from 6pm–9pm for a Skype or phone appointment. To make an appointment, please phone **0800 762 786** between 8.30am and 5pm weekdays and ask for Student Health. You will be asked to provide your Skype address and phone number. If a phone call is required, the counsellor will ring you at your appointment time.

Student Health Centre

Conveniently located on our Dunedin campus, the Student Health Centre provides the same services offered by your family doctor. It also promotes health education, and offers health screening tests, nutrition advice, vaccinations and some minor surgery options. The cost is \$15 or free if you have a current Community Services card.

Please see our website for information regarding Student Health Centres in Central Otago and Auckland.

Polykids Childcare Centre

Enjoy access to quality early childhood education and care for children up to five years of age. Spaces are limited and we strongly advise contacting Polykids when you apply for your programme of study.

Phone **+64 3 479 6169**

Email childcare@op.ac.nz

Forth Street (opposite Otago Polytechnic campus), Dunedin





The Learning Centre

Receive free learning support, including individual appointments, workshops, and organised study/tutorial groups. Meet us one-on-one or as a group to ensure you are achieving your academic best.

Computer access, email and IT help

Complete your assignments and recharge your laptop at our free computer suites which are open daily. You are given your own student email address, which is the best way to communicate with your lecturers. Wireless is also available at our three campuses.

We have a dedicated student IT service desk, where you can seek computer advice. Resources are also available to students who are not based in Dunedin.

Libraries

The Robertson Library at Otago Polytechnic's Dunedin campus provides a range of services and support to all students, including full research resources, photocopying and printing services.

Our Central Otago campus provides a specialist library with great support services.

Our Auckland International Campus offers full online library services, and is conveniently located across the road from the Auckland City Library.

Student Centre (Manaaki)

Located in the heart of the Dunedin campus, our Student Centre (Manaaki) is a great location to relax, eat, drink and meet other students. Halal and vegetarian food is available. Manaaki also hosts a variety of social events each year.

Māori and Pasifika students' rooms

At the Dunedin campus, Poho is a room for Māori students to meet, share kai and support one another. The Pasifika students' room provides a space for those from Pacific Islands communities to gather.

Scholarships (New Zealand students only)

We have scholarships available for New Zealand students in a number of study areas. Examples include the Principal's Scholarship for students leaving high school to enter tertiary education, scholarships available to Māori and Pacific Islands students, and staircasing scholarships to enable further study at Otago Polytechnic after successful completion of Foundation programmes.

To find out more about our scholarship programmes, please visit our website or contact:

New Zealand **0800 762 786**
International **+64 3 477 3014**
Email **info@op.ac.nz**

Studylink (New Zealand students only)

Our Student Fees Advisor is able to assist you with information regarding your application and the documentation required by Studylink for student loans and allowances. For more information about Studylink, please phone **0800 88 99 00** or visit **www.studylink.govt.nz**

Finding the right accommodation

Where you live makes a big difference to your student experience. Fortunately, there are many great options near each of our campuses.

Supervised accommodation

In Dunedin, supervised accommodation is a great option. You'll be able to meet people, many of your meals are provided and extra expenses such as electricity and phone rental are generally included. Supervised accommodation costs around \$330 per week.

City College* is located in North Dunedin, in the heart of the student area. You will live in apartment-style accommodation with "flatmates" and dine in a communal eating area. City College has excellent recreation and study facilities.

For more details, visit www.citycollege.co.nz

Salmond College* is an easy 15-minute walk from our Dunedin campus. It has great facilities for study and recreation and a communal eating area for meals. Free study tutorials are also available.

For more details, visit www.salmondcollege.ac.nz

The accommodation application process for City and Salmond colleges is managed by the University of Otago on behalf of Otago Polytechnic. Applications need to be submitted online via the University of Otago Accommodation Office webpage: www.otago.ac.nz/about/accommodation

You will need to register as an Otago Polytechnic applicant and will then be able to log in and check your application progress.

*You must submit an application for accommodation for City and Salmond Colleges by 30 September, 2013.

Gardens College is a private hall of residence, 15 minutes away from campus, with 70 rooms over two complexes. Most rooms have private en-suite bathrooms and some have kitchenettes. Each week you will be provided with breakfast and five evening meals.

For application information, go to www.gardenscollege.co.nz

"Flatting" or private shared accommodation

Many students love the experience of renting a house together, with friends and other students. When flatting, you will share living costs such as electricity, telephone and food.

Dunedin and Central Otago

A room in an unfurnished flat generally costs between \$85 and \$130 per week. Rooms in furnished flats usually cost slightly more – about \$120–\$160 per week – and are less common. You can also expect to spend another \$80–\$100 per week for expenses such as power, phone/internet and food in both living situations.

Auckland

A one-bedroom apartment may cost at least \$180 per week. A three-bedroom house or apartment may cost upwards of \$400 per week. Electricity and gas are usually not included in the rental price, and these types of accommodation are not often furnished. If you are staying in an apartment or house, you should allow at least \$250 a week for food, electricity, transport and basic living costs.

Studio and hostel accommodation

Dunedin

Studios are often furnished and you will have access to kitchen facilities. It costs around \$160–\$280 per week and often includes power, heating, local telephone calls and cleaning of the common areas. Higher-priced studios can include en-suite facilities. Self-contained one-bedroom apartments may cost around \$200–\$350 per week.

Central Otago

The Chalets Holiday Park is an unsupervised hostel where you can rent a single room for \$110 per week, including electricity. Students are usually placed together in one of the chalets, sharing lounge, bathroom and kitchen facilities.

For more details, visit www.thechaletscromwell.co.nz





Auckland

Hostels in Auckland include student hostels, the YMCA and tourist hostels. Student hostel accommodation is usually priced from \$150 a week for a shared room, and includes power costs and cleaning. Some hostels provide cooked meals and others provide shared kitchen facilities where you can cook your own meals.

For more details, visit www.ymcaauckland.org.nz

Start looking!

Some great places to start your search are:

www.studentaccommodation.co.nz (Dunedin)

www.odt.co.nz (Dunedin and Central Otago)

www.trademe.co.nz (all campuses)

www.share-accommodation.co.nz (all campuses)

Be sure to narrow your search to Dunedin, Central Otago or Auckland, and make use of Google Maps to work out how far away from campus you will be.

Homestay

Some students choose to live in a "homestay" for their first year at the Polytechnic, where you will live with a family in their home. Homestays cost about \$231–\$294 per week and include most meals (Halal options available). There is also a one-off placement fee of \$250.

You will have your own bedroom with a single bed, desk and wardrobe. Some homestay hosts may allow you to use the internet at home for a small fee, but you can also access the internet at Otago Polytechnic.

Anna Seiuli is your contact for homestay accommodation if you are an international student. Anna also provides accommodation advice to domestic students.

Our Student Success Team will also be happy to take enquiries about accommodation. See their contact details on page 88.



Information for international students

International students enjoy Otago Polytechnic for its supportive, friendly atmosphere, and internationally-recognised qualifications that prepare you for careers in the real world.

If you studied at a New Zealand secondary school, your NCEA results are recognised as your entry requirements for all of our programmes.

Information just for you

We have a range of resources especially for international students that you may find helpful.

Please go to www.op.ac.nz/international or find individual staff details on page 88.

Otago Polytechnic has representatives in many countries around the world. They can assist you with your application and provide general advice on life in New Zealand.

For help and a list of our representatives, see www.op.ac.nz/international-agents

English language requirements

If you wish to study one of our certificate, diploma or degree programmes, you must have the appropriate IELTS or equivalent English-language examination scores for entry. NCEA Level 2 English results may only be submitted by international students studying at a New Zealand secondary school.

English language and foundation studies are available for students who need further preparation before entering one of our academic programmes. See pages 6–8 for more information.

Otago, in Auckland

International students also have the option of studying English language, the Bachelor of Applied Management and the Graduate Diploma in Applied Management at our campus in Auckland.

Employment, immigration and your working rights as a student

All international students require a student visa from Immigration New Zealand to enable them to study in New Zealand.

Our International Admissions Office can assist students with their application.

Please email international@op.ac.nz

International students may be granted a Variation of Condition (VOC) on their student visa, so they can gain part-time employment while studying. Generally, if you are enrolled in a full-time programme, you can apply to work up to 20 hours per week.

You can apply to work full-time over the summer holidays if you are enrolled in any programme lasting 12 months or more.

Full details on student visa requirements, advice on rights to employment and other details, including where to lodge your application, are available through Immigration New Zealand at www.immigration.govt.nz

In Dunedin, Otago Polytechnic does not provide assistance with finding employment. But, we can direct students to appropriate job search agencies, or provide advice on job applications, resumés, CVs and interview skills.

In Auckland, we offer assistance finding employment for degree students.

In Central Otago, we may provide assistance in finding work placements in the viticulture, horticulture and hospitality industries.

New Zealand and the care of international students

International students are well looked after in New Zealand.

Otago Polytechnic has agreed to observe and be bound by the Code of Practice for the Pastoral Care of International Students, published by New Zealand's Ministry of Education.

Copies of the code are available from the Ministry's website at www.minedu.govt.nz

Eligibility for health services

Most international students are not entitled to publicly-funded health services while in New Zealand. If you receive medical treatment during your visit, you may be liable for the full costs of that treatment.

Full details on entitlements to publicly-funded health services are available through the Ministry of Health at www.moh.govt.nz

Accident insurance

The Accident Compensation Corporation (ACC) provides accident insurance for all New Zealand citizens, residents and temporary visitors to New Zealand, but you may still be liable for all other medical and related costs.

See www.acc.co.nz for more information.

Medical and travel insurance

International students (including group students) must have appropriate and current medical and travel insurance while studying in New Zealand. Our International Admissions Office will arrange appropriate medical and travel insurance for you and include the cost in your Offer of Place. This may cost approximately \$520 per year for full-time students. Otago Polytechnic's default insurance provider, Uni-Care, has a package called NZ Student Plan; details can be found at www.uni-care.co.nz

Refund policy

Terms and conditions, including our refund policy, can be found at www.op.ac.nz/termsandconditions



Frequently-asked questions

What are the tuition fees?

Tuition fees vary between programmes. They are paid on a yearly basis, and are usually between NZD\$16,000–\$20,000 for international students. The fees shown in this Programme Guide are 2013 indicative fees. Please note that all fees are for one year of study and in New Zealand dollars (NZD). Fees are likely to increase for each year of study. Additional fees may from time to time be required for external examinations, NZQA fees and/or additional materials. International fee components for 2014 may be subject to change.

Are all Otago Polytechnic qualifications internationally-recognised?

Yes. You can take your Otago Polytechnic undergraduate degree and apply to other national and international tertiary institutions for graduate and postgraduate study.

What is the minimum/maximum age to apply?

Usually, students beginning their programmes are at least 18 years of age. There is no maximum age to apply.

How long does it take to apply for an Otago Polytechnic programme?

We suggest you apply at least three or four months before your programme starts so that you are organised to arrive on time. There is no application fee.

What do I need to include in my application?

Your English language test results: IELTS, TOEFL or TOIEC. We also require certified copies of any academic results you have from your overseas high school or university. We may also require your curriculum vitae or a portfolio, depending on each programme's entry requirements.

What do I need for my student visa?

Your Otago Polytechnic "Offer of Place" letter means you have been accepted to study. It also states your tuition fee, which you must pay to your nearest New Zealand embassy, consulate or immigration office, and then you will receive a receipt of payment from us. You must submit this receipt, your Offer of Place letter, evidence that you have sufficient funds for living expenses, and a return international air ticket (or evidence of sufficient funds to buy one) to your nearest New Zealand embassy, consulate or immigration office.

For programmes longer than 24 months, you will also need to provide very recent medical and x-ray certificates. If you are over 17 years of age, you will need a police certificate to show you are of good character.

See www.immigration.govt.nz for more information.

What happens when I finish my studies?

Students who have completed their degree in the normal time and have a job offer related to their studies can apply for a work visa for another two years. This entitles you to work in the job you have been offered, and may help you qualify for residence.

What about applying for New Zealand residency?

If you meet the requirements of the current immigration policy in New Zealand, it is possible for you to apply for residence at any time. Immigration policy encourages students who have completed a degree in New Zealand to apply for permanent residence.





Experience an affordable lifestyle

New Zealand is a reasonably inexpensive place to live when compared with other countries.

Accommodation expenses are comparatively cheap (see accommodation information on pages 76–77), and you are likely to share your expenses with other students.

Plan your expenses

You'll need to think carefully about the amount of money required for the duration of your study. Remember, your daily cost of living is in addition to our tuition fees. Immigration New Zealand estimates that an international student will require at least \$15,000 per year to cover all living expenses.

What you might pay (in New Zealand dollars):

Transport

Depending on where you live, public transport can cost between \$10 and \$60 per week.

In both Dunedin and Central Otago, living close to campus means that your transport costs will be minimal, as most essential "everyday" activities are within walking distance.

Auckland City has excellent transport links, so you can easily commute to our Queen Street campus from your home.

Food

If you are not living in a homestay, you will need to allow at least \$100 per week for food costs. If you are getting "takeaways" (fast food) or buying meals at a restaurant, you can expect to pay \$5–\$20 for a cheap meal.

Approximate costs in New Zealand:

ITEM	AMOUNT IN NEW ZEALAND DOLLARS (NZD)
Cup of coffee	\$4 – \$5
McDonald's "Big Mac" burger	\$5.60
To post a letter within New Zealand	\$0.70
Local calls made from a cellphone (off-peak / peak per minute)	\$0.24 – \$1.39
Sim card	\$5 – \$20
Admission to major sports event	From \$15
Lunch from a café	\$5 – \$15
Main meal at a restaurant	\$15 – \$40
Petrol (unleaded) per litre	\$2.15
Ticket for a music event	From \$30

For currency exchange details see www.xe.com
All costs are approximate and subject to change.

Entry requirements and country-specific equivalencies

Entry to Otago Polytechnic's undergraduate certificates, diplomas and degrees is based on your achievement of secondary school qualifications equivalent to New Zealand's NCEA levels.

The following table helps you to see if you have achieved an equivalent qualification from your home country for entry into our different levels of undergraduate study.

This table is intended as a guide only. Please refer to individual programme information for the NCEA requirements. Your qualifications will be individually assessed to ensure they meet this entry criteria.

We teach in English

If English is not your first language you must provide evidence of English language proficiency. Otago Polytechnic recognises IELTS, TOEFL and TOEIC scores. Please contact our International Admissions Office to discuss any alternative English language examination results: international@op.ac.nz

Undergraduate study

Certificate entrance is usually open, but we still need to see evidence of your secondary school achievement.

Diploma entrance is based on secondary school achievement equivalent to New Zealand's NCEA Level 2, or Year 12 of secondary school. Successful completion of an Otago Polytechnic certificate or the English PLUS programme may also satisfy academic entry requirements for diplomas (see pages 6–8).

Degree entrance is based on secondary school achievement equivalent to 42 credits at New Zealand's NCEA Level 3, or

Year 13 of secondary school. Successful completion of an Otago Polytechnic certificate programme may also satisfy academic entry requirements for degrees (see pages 6–8).

Graduate/Postgraduate study

Entrance requires evidence of English language proficiency and successful completed study at undergraduate level (normally a bachelor's degree from a recognised tertiary institution). You must also provide any other information required by your chosen programme.

If we are unable to determine the validity of your qualification, we may ask you to submit your document to Education Credentials Evaluators www.ece.org for more information.

Key

IELTS (International English Language Testing System):

Measures the ability to communicate in English for people who intend to study or work where English is the language of communication. Otago Polytechnic also accepts other recognised international English Language test results, such as TOEFL (Test of English as a Foreign Language) and TOEIC (Test of English for International Communication).

NCEA (National Certificate of Educational Achievement):

New Zealand's national qualification for secondary school students.

NZQA (New Zealand Qualifications Authority): Quality-assures secondary and tertiary qualifications and education providers, evaluates overseas qualifications and administers the New Zealand qualifications including NCEA. See www.nzqa.govt.nz



Equivalent academic entry requirements by country

COUNTRY	NCEA LEVEL 2 Equivalent entry requirements for certificates and diplomas	NCEA LEVEL 3 Equivalent entry requirements for bachelors' degrees and selected diplomas
NEW ZEALAND	Successful completion of NCEA Level 2 with programme specific requirements	Successful completion NCEA with a minimum of 42 credits at Level 3 or higher, including programme specific requirements. Or, successful completion of an Otago Polytechnic certificate or diploma.
ARGENTINA	Titulo de Bachillerato	Successful completion of one year of tertiary study at a recognised institution. Or successful completion of an Otago Polytechnic certificate programme: see page 8.
AUSTRALIA	–	Successful completion of Year 12/High School Certificate.
BANGLADESH	Higher Secondary Certificate with 1st division pass (60% passes in 4 subjects)	Successful completion of one year of tertiary study at a recognised institution. Or successful completion of an Otago Polytechnic certificate programme: see page 8.
BRUNEI	GCE O Level Matriculation	GCE A Level Matriculation
BRAZIL	Certificado de Ensino Medio	Successful completion of one year's tertiary study at a recognised institution. Or successful completion of an Otago Polytechnic certificate programme: see page 8.
CANADA	–	Canadian High School Graduation with a minimum overall grade average of B or 65%. Different Provinces or Territories may vary. Ontario Secondary School Diploma with a minimum of 65%, in six subjects in Grade 12.
CHILE	Licencia de Educacion Media or Tecnico Media	Successful completion of one year's tertiary study at a recognised institution. Or successful completion of an Otago Polytechnic certificate programme: see page 8.
CHINA	Senior Secondary School Diploma	Achievement of good results in the National Higher Education Entrance Examination commonly known as the "Gaokao". Or successful completion of an Otago Polytechnic certificate programme: see page 8.
COLOMBIA	Bachillerato/Diploma de Bachiller	Successful completion of one year's tertiary study at a recognised institution. Or successful completion of an Otago Polytechnic certificate programme: see page 8.
DENMARK	Folkeskolens 10 Klasseprove	Bevis for Studentereksamen (Højere Forberedelseseksam) or Bevis for Højere Handelseksamen
FIJI	Fiji School Leaving Certificate with a 65% average over the best four subjects, which must include English and mathematics	Fiji 7th Form Certificate with a minimum of 250 including 50% in English; USP Foundation Studies Programme including a C in Communication Studies.
FRANCE	–	Baccalauréat
GERMANY	Mittlere Reife Realschulabschluss	Abitur or Zeugnis der Allgemeinen Hochschulreife
GHANA	West African School Certificate or GCE O Level with at least 4 A–C grades	3 passes in West African Higher School Certificate or GCE A levels.
HONG KONG	Hong Kong Certificate of Education (HKCE) or equivalent.	Three General Certificate of Education (GCE) "Ordinary" level passes and two "Advanced" level passes (minimum of 5 points) in the GCE. Or Advanced Level Examination (minimum of 5 points) plus three passes (min grade C) in the HKCEE. Or completion of the Hong Kong Diploma of Secondary Education (HKDSE) with a point score between 13–15 from the five best subjects.
INDIA	At least 55% average across 4 academic subjects in CBSE, HSC or ISC with at least 60% in English, or equivalent in other boards	At least a 70% average over 4 academic subjects in CBSE, HSC, or ISC with at least 60% in English, or equivalent in other boards.
INDONESIA	STTB – SMA	SMA (average of 8.5). Successful completion of one year's tertiary education. Or successful completion of an Otago Polytechnic certificate programme: see page 8.
ITALY	–	Successful completion of the Diploma di Maturita with a pass of at least 75%.

COUNTRY	NCEA LEVEL 2 Equivalent entry requirements for certificates and diplomas	NCEA LEVEL 3 Equivalent entry requirements for bachelors' degrees and selected diplomas
IRAN	High School Diploma (3 years) with grades of at least 10	Pre-University Certificate (Peeshdaneshgahe) or successful completion of one year's tertiary study at a recognised institution. Or successful completion of an Otago Polytechnic certificate programme: see page 8.
JAPAN	Kotogakko Sotsugyo Shomeisho (Upper Secondary School Leaving Certificate)	Successful completion of High School Diploma with a B average. Or successful completion of one year's tertiary education. Or successful completion of an Otago Polytechnic certificate programme: see page 8.
MALAYSIA	SPM with grades 1–6 or Chinese Unified Examination or equivalent	3 passes in STPM with C or better, or a maximum score of 18 points over 6 academic subjects in the UEC. English Language Proficiency Criteria: STPM English grade of B or higher; SPM English grade of A1 or A2; UEC English grade of B4 or higher. Or successful completion of an Australian Matriculation Programme, or successful completion of a Canadian Matriculation Programme.
NETHERLANDS	HAVO Diploma/senior general secondary education	VWO-Gymnasium A or B; VWO-Atheneum A or B Diplomas
NEPAL	Higher Secondary Certificate with 1st division pass	Successful completion of one year's tertiary study at a recognised institution. Or successful completion of an Otago Polytechnic certificate programme: see page 8.
NEW CALEDONIA	Baccalauréat with a minimum grade 10	Baccalauréat with a minimum grade 12
NORWAY	Vitnemal fra Grunnskolen	Vitnemal fra den Videregaende Skole
OMAN	Thanawiya Amma (Secondary School Leaving Certificate) with a minimum overall mark of 80%	Successful completion of one year's tertiary study at a recognised institution. Or successful completion of an Otago Polytechnic certificate programme: see page 8.
PAKISTAN	Higher Secondary School Certificate with a minimum average of 60%	Successful completion of one year's tertiary study at a recognised institution. Or successful completion of an Otago Polytechnic certificate programme: see page 8.
PAPUA NEW GUINEA	Higher School Certificate	UPNG Foundation Studies Certificate. Or successful completion of an Otago Polytechnic certificate programme: see page 8.
PHILIPPINES	High School Graduation with a pass in the University Admission Test	Successful completion of one year's tertiary study at a recognised institution. Or successful completion of an Otago Polytechnic certificate programme: see page 8.
RUSSIA	(Attestat) Certificate of Secondary Education, or Certificate of Maturity	Successful completion of one year's tertiary study at a recognised institution. Or successful completion of an Otago Polytechnic certificate programme: see page 8.
SAMOA	–	USP Foundation Studies Certificate; UPY Certificate with at least 8 passes including a C1 pass in English.
SAUDI ARABIA	Tawjihiyah (General Secondary Education Certificate) with a minimum overall mark of 60%; Higher Technical Institute Diploma	Successful completion of one year's tertiary study at a recognised institution or an Associate's Degree. Or successful completion of an Otago Polytechnic certificate programme: see page 8.
SINGAPORE	GCE O Level with 4 grades of 1–6	GCE A Level; Foundation Studies Certificate
SOUTH KOREA	High School Diploma	Successful completion of High School Diploma with a B average. Or successful completion of one year's tertiary education. Or successful completion of an Otago Polytechnic certificate programme: see page 8.
SRI LANKA	4 GCE O Levels with grades ranging from A-C	Sri Lankan GCE A Levels with passes in at least 3 subjects. Or successful completion of an Otago Polytechnic certificate programme: see page 8.
SWEDEN	Slutbetyg fran Grundskola (Upper Grades)	Student Examen/Avgangsbetyg Leaving Certificate



COUNTRY	NCEA LEVEL 2 Equivalent entry requirements for certificates and diplomas	NCEA LEVEL 3 Equivalent entry requirements for bachelors' degrees and selected diplomas
SWITZERLAND	–	Maturitätszeugnis/Certificat de Maturité/Attestato di Maturità
TAIWAN	Senior High School Leaving Certificate	Junior College Diploma or one year's tertiary study at a recognised institution. Or successful completion of an Otago Polytechnic certificate programme: see page 8.
THAILAND	Matayom 6 (with a score of 50% or higher)	Matayom 6 with either 80% or more of grades at Level 4 or a Grade Point Average of 2.5 or higher, with a relevant subject mix. Or successful completion of one year's tertiary education. Or successful completion of an Otago Polytechnic certificate programme: see page 8.
TONGA	Successful completion of Form 6	Successful completion of Form 7; USP Foundation Studies Certificate. Or successful completion of an Otago Polytechnic certificate programme: see page 8.
UNITED KINGDOM	GCE O Levels in 4 subjects	GCE A Levels in 3 subjects
USA	High School Graduation Diploma, with a minimum C average	High School Graduation Diploma with a minimum C average, plus SAT 1 and SAT II score minimum 500/part. Or the Advanced Placement Exam.
VIETNAM	Successful completion of either the Diploma of General Education (Bang Tu Tai) or the Upper Secondary School Graduation Certificate (Bang Tot Nghiep Pho Tong Trung Hoc) with scores of 6 or higher	Successful completion of one year's tertiary study at a recognised institution. Or successful completion of an Otago Polytechnic certificate programme: see page 8.
WORLDWIDE	Cambridge O Levels	Cambridge A Levels International Baccalaureate

Programme summary 2014

PROGRAMME NAME	LEVEL	IELTS	DOMESTIC	INTERNATIONAL
New Zealand Certificate in English Language (Levels 1-5)*	1-5	–	✗	✓
English PLUS Certificate in Foundation Studies (Level 4) Creative/Cookery/Computing/Business/Sport/Technical Horticulture	3	5.5	✗	✓
English for Groups	–	–	✗	✓
Certificate in Foundation Studies (Levels 2 and 3)	2-3	–	✓	✓
Certificate/Graduate Diploma in Sustainable Practice	5, 7	6.0	✓	✓
Graduate Diploma in Tertiary Education (Level 7)	7	6.0	✓	✓
Graduate Diploma in Professional Practice OR Master of Professional Practice	7, 9	6.5	✓	✓
Certificate in Mata ā Ao Māori (Level 4)	4	6.0	✓	✗
HEALTH AND COMMUNITY CAREERS				
Certificate in Health (Level 4)	4	6.0	✓	✓
Bachelor of Nursing	7	6.5	✓	✓
Competency Assessment Programme (CAP) for New Zealand Registered Nurses	–	–	✓	✗
Competency Assessment Programme (CAP) for Overseas Registered Nurses	–	7.0	✓	✓
Bachelor of Midwifery	7	7.0	✓	✓
Continuing Education for New Zealand Midwives and Registration Competence Programme for Overseas Midwives	–	7.5	✓	✓
Postgraduate Certificate in Midwifery Practice	8	6.5	✓	✓
Postgraduate Diploma in Midwifery	8	6.5	✓	✓
Master of Midwifery	9	6.5	✓	✓
Bachelor of Occupational Therapy	7	7.0	✓	✓
Bachelor of Occupational Therapy (Honours)	8	6.5	✓	✓
Postgraduate Certificate/Diploma in Occupational Therapy Practice	8	6.5	✓	✓
Master of Occupational Therapy	9	6.5	✓	✓
Certificate in Human Services (Level 4) including: > National Certificate in Mental Health and Addiction Support (Level 4) > National Certificate in Community Support Services (Disability Information Provision) (Level 4) > National Certificate in Social Services (Level 4)	4	6.0	✓	✓
Bachelor of Social Services Counselling; Career Practice; Social Services > Including the exit qualification Diploma in Social Services (Level 6): Disability Support, Mental Health Support	7	6.5	✓	✓
CREATIVE CAREERS				
Certificate in Creative Studies	4	6.0	✓	✓
Bachelor of Visual Arts	7	6.0	✓	✓

PROGRAMME NAME	LEVEL	IELTS	DOMESTIC	INTERNATIONAL
Diploma in Ceramic Arts (Level 6)	6	5.5	✓	✓
Diploma in Ceramic Arts (Level 7)	7	6.0	✓	✓
Graduate Diploma in Visual Arts	7	6.0	✓	✓
Bachelor of Visual Arts (Honours)	8	6.5	✓	✓
Postgraduate Certificate in Visual Arts	8	6.5	✓	✓
Postgraduate Diploma in Visual Arts	8	6.5	✓	✓
Master of Visual Arts	9	6.5	✓	✓
Master of Fine Arts	9	6.5	✓	✓
Certificate in Fashion Studies (Level 4)	4	6.0	✓	✓
Bachelor of Design (Fashion)	7	6.0	✓	✓
Bachelor of Design (Product)	7	6.0	✓	✓
Bachelor of Design (Communication)	7	6.0	✓	✓
Bachelor of Design (Interiors)	7	6.0	✓	✓
Graduate Diploma in Design (Specialty)	7	6.0	✓	✓
Master of Design Enterprise	9	6.0	✓	✓
HOSPITALITY CAREERS				
National Certificate in Hospitality (Basic Cookery) (Level 3)	3	6.0	✓	✓
Certificate in Cookery (Level 3)	3	6.0	✓	✓
Diploma in Professional Cookery (Level 5)	5	6.0	✓	✓
Bachelor of Culinary Arts	7	6.0	✓	✓
Certificate in Café and Bar (Level 3)	3	5.5	✓	✓
Certificate in Professional Restaurant, Bar and Wine (Level 4)	4	6.0	✓	✓
National Diploma in Hospitality (Management) (Level 5)	5	6.0	✓	✓
BUSINESS, TOURISM AND IT CAREERS				
National Certificate in Business Administration and Computing (Level 3)	3	5.5	✓	✓
National Certificate in Business Administration (Level 4)	4	5.5	✓	✓
Diploma in Accounting (Level 5)	5	6.0	✓	✓
Diploma in Business (Level 5)	5	6.0	✓	✓
Diploma in Marketing (Level 5)	5	6.0	✓	✓
Diploma in Human Resource Management (Level 6)	6	6.0	✓	✓
New Zealand Diploma in Business	6	6.0	✓	✓
Graduate Diploma in Applied Management	7	6.0	✓	✓

PROGRAMME NAME	LEVEL	IELTS	DOMESTIC	INTERNATIONAL
Bachelor of Applied Management (Specialty)** > Strategic Management > Sustainable Practice (Graduate Diploma-level only) > Human Resource Management > Sport Management > Tourism Management > Sales and Marketing > Event Management > Business Transformation and Change > Hotel Management (Graduate Diploma-level, Auckland International Campus only). **Majors are not offered at our Auckland International Campus Fast-track options available in Auckland. Majors are subject to change. Please contact the School of Applied Business for more information.	7	6.0	✓	✓
Certificate in Applied Travel and Tourism (Level 3)	3	6.0	✓	✓
Diploma in Applied Travel and Tourism (Level 5)	5	6.0	✓	✓
Certificate in Information Technology (Level 3)	3	5.5	✓	✓
Certificate in Information Technology (Level 4)	4	6.0	✓	✓
Certificate in IT Service and Support	4	5.5	✓	✓
Bachelor of Information Technology	7	6.0	✓	✓
Graduate Certificate in Information Technology (Level 7)	7	6.0	✓	✓
Graduate Diploma in Information Technology	7	6.0	✓	✓
TRADES AND TECHNICAL CAREERS				
Certificate in Foundation Studies (Level 3)* Akoraka Mahi Tini	3	–	✓	✗
Certificate in Foundation Studies (Level 3)* Masonry Trades	3	–	✓	✗
Certificate in Foundation Studies (Level 3)* Painting and Decorating	3	–	✓	✗
Certificate in Foundation Studies (Level 3)* Plasterboard Fixing and Stopping	3	–	✓	✗
Certificate in Carpentry (Level 4)	4	–	✓	✗
Certificate in Stonemasonry (Level 4)	4	5.5	✓	✓
National Certificate in Construction (Leading Hand) (Level 4)	4	–	✓	✗
National Certificate in Construction (Supervisor) (Level 5)	5	–	✓	✗
National Diploma in Construction Management (Level 6)	6	6.0	✓	✓
Diploma in Architectural Draughting (Level 6)	6	6.0	✓	✓
National Diploma in Quantity Surveying (Level 6)	6	6.0	✓	✓
Certificate in Automotive Engineering (Level 3)	3	5.5	✓	✓
Certificate in Electrical Technology (Level 4)	4	5.5	✓	✓
Certificate in Engineering (Level 3)*	3	5.5	✓	✓

PROGRAMME NAME	LEVEL	IELTS	DOMESTIC	INTERNATIONAL
New Zealand Diploma in Engineering Specialties: Mechanical, Civil or Electrical Engineering	6	6.0	✓	✓
Bachelor of Engineering Technology Specialties: Electrical Engineering, Mechanical Engineering, Civil Engineering	7	6.0	✓	✓
SPORT AND ADVENTURE CAREERS				
Diploma in Applied Sport and Exercise Leadership (Level 5) (Sport Management and Coaching)	5	6.0	✓	✓
Diploma in Applied Sport and Exercise Leadership (Level 5) (Personal Training and Exercise Prescription)	5	6.0	✓	✓
Bachelor of Applied Science (Physical Activity, Health and Wellness)	7	6.0	✓	✓
Graduate Diploma in Applied Science (Physical Activity, Health and Wellness)*	7	6.0	✓	✓
Graduate Diploma in Applied Science (Performance Analysis)*	7	6.0	✓	✓
Graduate Diploma in Physical Conditioning (Level 7)	7	6.0	✓	✓
Certificate in Avalanche Safety and Snowsport Instructing (Ski) or (Snowboard)	3	5.5	✓	✓
Certificate in Snowsport Instructing (Ski) or (Snowboard)	4	5.5	✓	✓
Diploma in Avalanche Studies	6	6.0	✓	✓
Diploma in Outdoor Leadership and Management (Level 5)	5	6.0	✓	✓
LIFE SCIENCE CAREERS				
Certificate in Sustainable Growing (Levels 2 and 3)	2-3	–	✓	✗
Certificate in Sustainable Farming (Levels 2 and 3)	2-3	–	✓	✗
National Certificate in Sports Turf Management (Level 4)	4	5.5	✓	✓
National Certificate in Horticulture (Level 4) Landscape Construction or Sustainable Horticulture	4	5.5	✓	✓
National Certificate in Horticulture (Arboriculture) (Level 4)	4	5.5	✓	✓
National Certificate in Horticulture (Level 4) Viticulture, Landscaping, General Horticulture or Fruit Production	4	5.5	✓	✓
National Certificate in Horticulture (Advanced) (Level 4) Amenty Horticulture, Landscape or Nursery Production	4	5.5	✓	✓
Diploma in Horticulture (Level 5)	5	6.0	✓	✓
Diploma in Viticulture (Level 5)	5	6.0	✓	✓
National Certificate in Animal Care	2	–	✓	✗
National Certificate in Veterinary Nursing	5	6.0	✓	✓
National Diploma in Veterinary Nursing	5	–	✓	✗
Certificate in Rural Animal Technology	5	–	✓	✗

*Subject to final approval

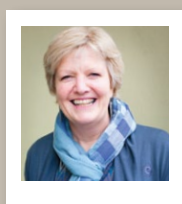
Getting ready to apply

Make your future happen! Apply now

Please see our application form and step-by-step application guide for more information about how to submit your application and what to include. Or you can visit www.op.ac.nz to apply.

Our dedicated support teams can help you through the process of applying to Otago Polytechnic. Don't hesitate to contact us via email or phone with your application questions.

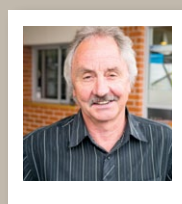
Liaison Team



Susie Scott
Liaison Advisor
susie.scott@op.ac.nz



Rachael Shriffer
Liaison Advisor
rachael.shriffer@op.ac.nz



Graham Jones
Liaison Advisor
graham.jones@op.ac.nz



Yuan Pei
Liaison Advisor
yuan.pei@op.ac.nz

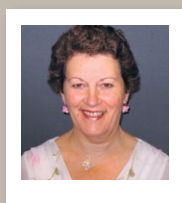


Tama Tuirirangi
Kaiārahi
Māori Liaison & Support
tama.tuirirangi@op.ac.nz

Contact us before you come

Our Liaison team is out and about meeting with prospective domestic and international students, their parents and our network of representatives. We may even be able to meet with you in person to discuss your future study options and life at Otago Polytechnic. Contact us if you would like to meet one of our Liaison representatives or if you would like to talk to our Career Practitioner about your study options (see below for contact details).

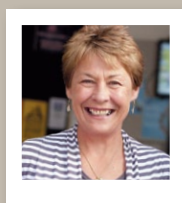
Student Success Team



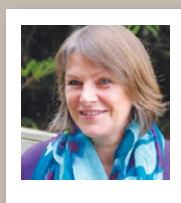
Kitty Keogh
Student Advisor
kitty.keogh@op.ac.nz



Sheena Roy
Student Advisor
sheena.roy@op.ac.nz



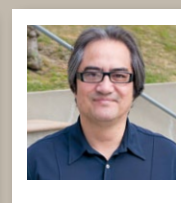
Yvonne Fogarty
International
Student Advisor
yvonne.fogarty@op.ac.nz



Jane Field
Career Practitioner
jane.field@op.ac.nz



Anna Seiuli
Accommodation and
Pasifika support
anna.seiuli@op.ac.nz



Brayden Murray
Student Advisor
Kaitautoko
brayden.murray@op.ac.nz

Contact our teams

New Zealand 0800 762 786
International +64 3 477 3014
Visit us at www.op.ac.nz

International Admissions Office
Email international@op.ac.nz
Student Success
Email studentsuccess@op.ac.nz



Like us at
www.facebook.com/otagopoly



Watch us at
www.youtube.com/otagopolytechnic



Tweet us at
www.twitter.com/otagopolytech

General information: The information contained in this prospectus is aimed at answering as many questions as possible. While every effort is made to ensure accuracy at the time of printing, Otago Polytechnic reserves the right to alter and amend information, and withdraw programmes without notice. All programmes, fees and costs are subject to change. Fees and any costs are stated in New Zealand dollars (NZD).

Cancellation of a programme/course: Enrolment in a programme or course is conditional upon and subject to sufficient numbers of students enrolling in that programme or course.

For full terms and conditions please go to www.op.ac.nz/termsandconditions

Fees: The fees shown in this prospectus are 2013 indicative domestic fees and 2013 indicative international fees. Please note that additional fees may from time to time be required for external examinations, NZQA fees, and/or additional material fees. Both domestic and international fee components for 2014 are indicative and may be subject to change once applicable Tertiary Education Commission rules and guidelines are released.

English requirements: If English is your second language, you will need to meet the English entry requirements of the programme you are applying for. For more information, please contact Customer Services.

KEY

Hook-on fee: A one off payment that enables students to “hook-on” to the National Qualifications Framework (NQF).

IELTS (International English Language Testing System): Measures the ability to communicate in English for people who intend to study or work where English is the language of communication.

NCEA (National Certificate of Educational Achievement): New Zealand’s national qualifications for senior secondary students.

NQF (National Qualifications Framework): Provides nationally recognised standards and qualifications and recognition and credit for a wide range of knowledge and skills.

NZQA (New Zealand Qualifications Authority): Quality-assures secondary and tertiary qualifications and education providers, evaluates overseas qualifications and administers the New Zealand Register of Quality Assured Qualifications and the National Qualifications Framework, including the NCEA.

New Zealand students: New Zealand students do not pay full fees as the New Zealand Government partially or totally subsidises Otago Polytechnic for the cost of the programme/course. Immigration New Zealand refer to these students as “domestic students”. The Ministry of Education holds a complete **list of who is considered to be a domestic student** for the purpose of fee payment and enrolment.

Visit: <http://glossary.immigration.govt.nz/DomesticStudent.htm>

International students: Students who do not qualify as being domestic students are referred to in this programme guide as “international students”.

Keeping it green: This document is printed on Advanced Laser by BJBall Papers and is produced using fast growing farmed eucalyptus trees, which take as little as three to five years before they are ready for harvesting, providing sustainable income opportunities for rural communities. It is manufactured at an ISO 14001 and ISO 9001 accredited mill in an ECF process and it has been printed using sustainable processes by Southern Colour Print.

Special thanks to Isabella Harrex and Derek Morrison for their photography.



OTAGO

POLYTECHNIC

Te Kura Matatini ki Otago

NEW ZEALAND

Forth Street, Private Bag 1910
Dunedin 9016, New Zealand
Telephone + 64 3 477 3014
Facsimile + 64 3 471 6870
Freephone 0800 762 786

www.op.ac.nz